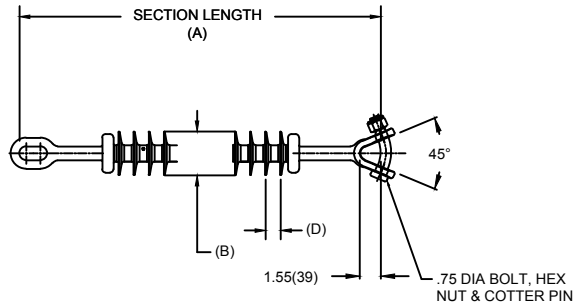


# OHIO BRASS QUADRI\*SIL SUSPENSION INSULATOR

CAT NO.: S025023S2000		
REV:	00	March 4, 2018



HUBBELL POWER SYSTEMS, INC.  
 CUSTOMER SERVICE: (573) 682-5521  
 www.hubbellpowersystems.com



MECHANICAL VALUES	LBS	KN
SPECIFIED TENSILE LOAD (STL)	25000	111
MAX DESIGN TENSILE LOAD (RTL)	12500	55.5

ELECTRICAL VALUES	KV	
60 HZ DRY FLASHOVER (DRY WITHSTAND)	250	-
60 HZ WET FLASHOVER (WET WITHSTAND)	235	(175)
CRITICAL IMPULSE FLASHOVER + (WITHSTAND)	415	(370)
CRITICAL IMPULSE FLASHOVER - (WITHSTAND)	395	(355)
RIV AT 115% SYSTEM VOLTAGE	≤100 μV	

DIMENSIONAL VALUES	IN.	MM
SECTION LENGTH (A)	37	939
MAJOR SHED DIAMETER (B)	2.9	73
MINOR SHED DIAMETER (C)	0	0
DRY ARC DISTANCE	23.7	601
SHEATH THICKNESS	>0.118	>3
LEAKAGE DISTANCE	60	1524
SHED SPACING (D)	1.08	27.4
CORE ROD DIAMETER	0.625	15.9

### END FITTINGS AND MATERIALS

LINE END: CHAIN\_EYE / GALV STEEL  
 TOWER END: Y-CLEVIS / GALV STEEL

### NOTES:

1. SILICONE RUBBER SHEATH AND SHEDS. WASHABLE PER IEEE P957
2. ELECTRICAL VALUES PER ANSI C29.12 (IEC 61109 & 62217)

### OTHER DETAILS

CORONA RING (TOWER)	NONE
CORONA RING (LINE)	NONE
TORQUE REQUIREMENTS	N/A
MOUNTING ANGLE	-
NUMBER OF SHEDS	22
WEIGHT	7 lbs.      3.1 kg.

CONFIDENTIAL: THIS DRAWING AND ITS CONTENTS ARE CONFIDENTIAL AND THE EXCLUSIVE PROPERTY OF HUBBELL POWER SYSTEMS. NO PUBLICATION, DISTRIBUTION OR COPIES MAY BE MADE WITHOUT THE WRITTEN CONSENT OF HUBBELL POWER SYSTEMS. HUBBELL POWER SYSTEMS UNPUBLISHED ALL RIGHTS RESERVED UNDER THE COPYRIGHT LAWS