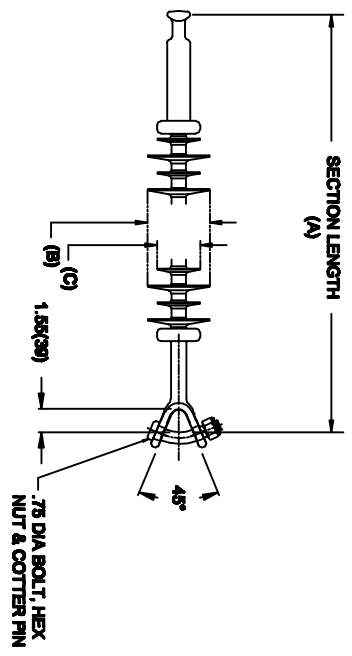


OHIO BRASS QUADRI-SIL SUSPENSION INSULATOR

CAT NO.:	S025024E2010	
REV.:	00	March 4, 2018



HUBBELL POWER SYSTEMS, INC.
 CUSTOMER SERVICE: (573) 682-5521
www.hubbellpowersystems.com



MECHANICAL VALUES		
SPECIFIED TENSILE LOAD (STL)	LBS	KN
	25000	111
MAX DESIGN TENSILE LOAD (RTL)	12500	55.5

ELECTRICAL VALUES		
60 HZ DRY FLASHOVER (DRY WITHSTAND)	275	-
60 HZ WET FLASHOVER (WET WITHSTAND)	260	(195)
CRITICAL IMPULSE FLASHOVER + (WITHSTAND)	455	(405)
CRITICAL IMPULSE FLASHOVER - (WITHSTAND)	430	(385)
RIV AT 115% SYSTEM VOLTAGE		≤100 μV

DIMENSIONAL VALUES		
SECTION LENGTH (A)	IN.	MM
	36.6	929
MAJOR SHED DIAMETER (B)	5.83	148
MINOR SHED DIAMETER (C)	4.61	117
DRY ARC DISTANCE	27.1	688
SHEATH THICKNESS	>0.118	>3
LEAKAGE DISTANCE	105	2667

- END FITTINGS AND MATERIALS**
- LINE END: ANSI_52-5 BALL / GALV STEEL
- TOWER END: Y-CLEVIS / GALV STEEL
- NOTES:**
- SILICONE RUBBER SHEATH AND SHEDS, WASHABLE PER IEEE P957
 - ELECTRICAL VALUES PER ANSI C29.17 (IEC 61109 & 62217)

OTHER DETAILS		
CORONA RING (TOWER)	NONE	
CORONA RING (LINE)	NONE	
TORQUE REQUIREMENTS	N/A	
MOUNTING ANGLE	-	
NUMBER OF SHEDS	22	
WEIGHT	12 lbs.	5.4 kg.