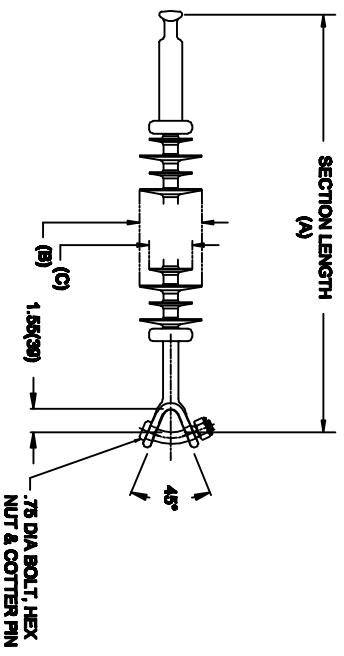


OHIO BRASS QUADRI-SIL SUSPENSION INSULATOR

| | | |
|----------|--------------|---------------|
| CAT NO.: | S025036E2010 | |
| REV.: | 00 | March 4, 2018 |



HUBBELL POWER SYSTEMS, INC.
 CUSTOMER SERVICE: (573) 682-5521
www.hubbellpowersystems.com



| | | |
|-------------------------------|-------|------|
| MECHANICAL VALUES | | |
| SPECIFIED TENSILE LOAD (STL) | LBS | KN |
| | 25000 | 111 |
| MAX DESIGN TENSILE LOAD (RTL) | 12500 | 55.5 |

| | | |
|--|------|-------|
| ELECTRICAL VALUES | | |
| 60 HZ DRY FLASHOVER (DRY WITHSTAND) | 380 | - |
| 60 HZ WET FLASHOVER (WET WITHSTAND) | 360 | (270) |
| CRITICAL IMPULSE FLASHOVER + (WITHSTAND) | 620 | (555) |
| CRITICAL IMPULSE FLASHOVER - (WITHSTAND) | 615 | (550) |
| RIV AT 115% SYSTEM VOLTAGE | ≤100 | μV |

| | | |
|---------------------------|--------|------|
| DIMENSIONAL VALUES | | |
| SECTION LENGTH (A) | IN. | MM |
| | 48 | 1219 |
| MAJOR SHED DIAMETER (B) | 5.83 | 148 |
| MINOR SHED DIAMETER (C) | 4.61 | 117 |
| DRY ARC DISTANCE | 38.4 | 975 |
| SHEATH THICKNESS | >0.118 | >3 |
| LEAKAGE DISTANCE | 153 | 3886 |

- END FITTINGS AND MATERIALS**
- LINE END: ANSI_52-5 BALL / GALV STEEL
- TOWER END: Y-CLEVIS / GALV STEEL
- NOTES:**
1. SILICONE RUBBER SHEATH AND SHEDS, WASHABLE PER IEEE P957
 2. ELECTRICAL VALUES PER ANSI C29.17 (IEC 61109 & 62217)

| | | |
|----------------------|-----------|-------|
| OTHER DETAILS | | |
| CORONA RING (TOWER) | NONE | |
| CORONA RING (LINE) | NONE | |
| TORQUE REQUIREMENTS | N/A | |
| MOUNTING ANGLE | - | |
| NUMBER OF SHEDS | 32 | |
| WEIGHT | 15.5 lbs. | 7 kg. |