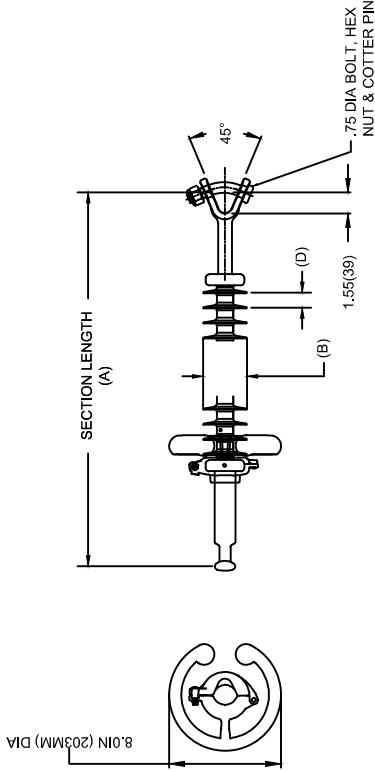


OHIO BRASS QUADRI*SIL SUSPENSION INSULATOR



HUBBELL POWER SYSTEMS, INC.
 CUSTOMER SERVICE: (573) 682-5521
 www.hubbellpowersystems.com

CAT NO.: S025040S201A	
REV: 00	March 4, 2018



MECHANICAL VALUES	LBS	KN
SPECIFIED TENSILE LOAD (STL)	25000	111
MAX DESIGN TENSILE LOAD (RTL)	12500	55.5

ELECTRICAL VALUES	KV
60 HZ DRY FLASHOVER (DRY WITHSTAND)	425 -
60 HZ WET FLASHOVER (WET WITHSTAND)	405 (300)
CRITICAL IMPULSE FLASHOVER + (WITHSTAND)	685 (615)
CRITICAL IMPULSE FLASHOVER - (WITHSTAND)	675 (605)
RIV AT 115% SYSTEM VOLTAGE	≤100 μV

DIMENSIONAL VALUES	IN.	MM
SECTION LENGTH (A)	52.7	1338
MAJOR SHED DIAMETER (B)	2.9	73
MINOR SHED DIAMETER (C)	0	0
DRY ARC DISTANCE	40.3	1023
SHEATH THICKNESS	>0.118	>3
LEAKAGE DISTANCE	104	2641
SHED SPACING (D)	1.08	27.4
CORE ROD DIAMETER	0.625	15.9

END FITTINGS AND MATERIALS

LINE END: ANSI_52-5_BALL / GALV STEEL
 TOWER END: Y-CLEVIS / GALV STEEL

OTHER DETAILS

CORONA RING (TOWER) NONE
 CORONA RING (LINE) PSPISCRCL0083Q58 8.0 IN
 TORQUE REQUIREMENTS 4 ft.-lb
 MOUNTING ANGLE -
 NUMBER OF SHEDS 38
 WEIGHT 10.2 lbs. 4.6 kg.

NOTES:

1. SILICONE RUBBER SHEATH AND SHEDS. WASHABLE PER IEEE P957
2. ELECTRICAL VALUES PER ANSI C29.12 (IEC 61109 & 62217)
3. CORONA RING SHIPPED WITH BUT NOT ATTACHED TO INSULATOR.