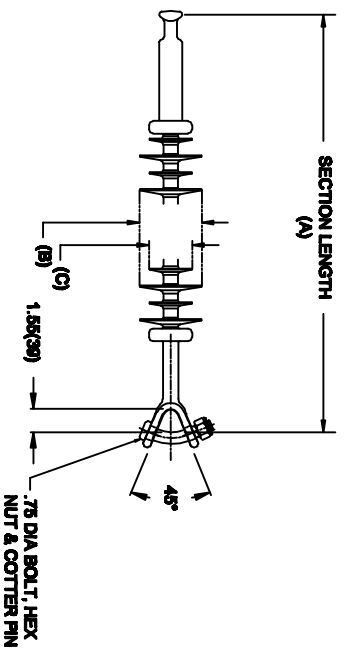


# OHIO BRASS QUADRI-SIL SUSPENSION INSULATOR

CAT NO.:	S025043E2010	
REV.:	00	March 4, 2018



HUBBELL POWER SYSTEMS, INC.  
 CUSTOMER SERVICE: (573) 682-5521  
[www.hubbellpowersystems.com](http://www.hubbellpowersystems.com)



## END FITTINGS AND MATERIALS

LINE END: ANSI\_52-5 BALL / GALV STEEL  
 TOWER END: Y-CLEVIS / GALV STEEL

## NOTES:

1. SILICONE RUBBER SHEATH AND SHEDS, WASHABLE PER IEEE P957
2. ELECTRICAL VALUES PER ANSI C29.17 (IEC 61109 & 62217)

<b>MECHANICAL VALUES</b>		
SPECIFIED TENSILE LOAD (STL)	LBS	KN
	25000	111
MAX DESIGN TENSILE LOAD (RTL)	12500	55.5

<b>ELECTRICAL VALUES</b>		
60 HZ DRY FLASHOVER (DRY WITHSTAND)	445	-
60 HZ WET FLASHOVER (WET WITHSTAND)	420	(315)
CRITICAL IMPULSE FLASHOVER + (WITHSTAND)	725	(650)
CRITICAL IMPULSE FLASHOVER - (WITHSTAND)	730	(655)
RIV AT 115% SYSTEM VOLTAGE	≤100	μV

<b>DIMENSIONAL VALUES</b>		
SECTION LENGTH (A)	IN.	MM
	54.9	1394
MAJOR SHED DIAMETER (B)	5.83	148
MINOR SHED DIAMETER (C)	4.61	117
DRY ARC DISTANCE	45.3	1150
SHEATH THICKNESS	>0.118	>3
LEAKAGE DISTANCE	182	4622

## OTHER DETAILS

CORONA RING (TOWER)	NONE
CORONA RING (LINE)	NONE
TORQUE REQUIREMENTS	N/A
MOUNTING ANGLE	-
NUMBER OF SHEDS	38
WEIGHT	17.6 lbs. 8 kg.