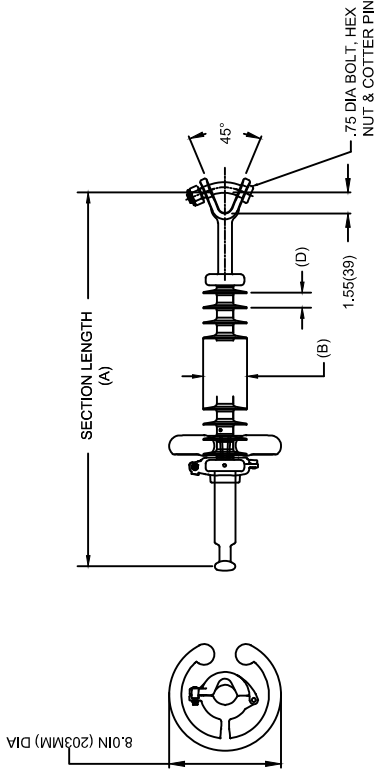


# OHIO BRASS QUADRI\*SIL SUSPENSION INSULATOR

CAT NO.: S025043S201A	
REV:	00 March 4, 2018



HUBBELL POWER SYSTEMS, INC.  
 CUSTOMER SERVICE: (573) 682-5521  
 www.hubbellpowersystems.com



MECHANICAL VALUES	LBS	KN
SPECIFIED TENSILE LOAD (STL)	25000	111
MAX DESIGN TENSILE LOAD (RTL)	12500	55.5

ELECTRICAL VALUES	KV
60 HZ DRY FLASHOVER (DRY WITHSTAND)	450 -
60 HZ WET FLASHOVER (WET WITHSTAND)	425 (315)
CRITICAL IMPULSE FLASHOVER + (WITHSTAND)	720 (645)
CRITICAL IMPULSE FLASHOVER - (WITHSTAND)	715 (640)
RIV AT 115% SYSTEM VOLTAGE	≤100 μV

DIMENSIONAL VALUES	IN.	MM
SECTION LENGTH (A)	54.9	1394
MAJOR SHED DIAMETER (B)	2.9	73
MINOR SHED DIAMETER (C)	0	0
DRY ARC DISTANCE	42.4	1076
SHEATH THICKNESS	>0.118	>3
LEAKAGE DISTANCE	110	2794
SHED SPACING (D)	1.08	27.4
CORE ROD DIAMETER	0.625	15.9

## END FITTINGS AND MATERIALS

- LINE END: ANSI\_52-5\_BALL / GALV STEEL  
 TOWER END: Y-CLEVIS / GALV STEEL
- NOTES:  
 1. SILICONE RUBBER SHEATH AND SHEDS. WASHABLE PER IEEE P957  
 2. ELECTRICAL VALUES PER ANSI C29.12 (IEC 61109 & 62217)  
 3. CORONA RING SHIPPED WITH BUT NOT ATTACHED TO INSULATOR.

## OTHER DETAILS

CORONA RING (TOWER)	NONE
CORONA RING (LINE)	PSPISCRCL0083Q58 8.0 IN
TORQUE REQUIREMENTS	4 ft.-lb
MOUNTING ANGLE	-
NUMBER OF SHEDS	40
WEIGHT	10.4 lbs. 4.7 kg.