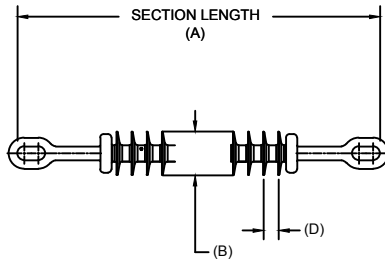


OHIO BRASS QUADRI*SIL SUSPENSION INSULATOR

| | | |
|-----------------------|----|---------------|
| CAT NO.: S025060S0000 | | |
| REV: | 00 | March 4, 2018 |



HUBBELL POWER SYSTEMS, INC.
 CUSTOMER SERVICE: (573) 682-5521
 www.hubbellpowersystems.com



| MECHANICAL VALUES | LBS | KN |
|-------------------------------|-------|------|
| SPECIFIED TENSILE LOAD (STL) | 25000 | 111 |
| MAX DESIGN TENSILE LOAD (RTL) | 12500 | 55.5 |

| ELECTRICAL VALUES | KV | |
|--|---------|-------|
| 60 HZ DRY FLASHOVER (DRY WITHSTAND) | 625 | - |
| 60 HZ WET FLASHOVER (WET WITHSTAND) | 580 | (435) |
| CRITICAL IMPULSE FLASHOVER + (WITHSTAND) | 1000 | (900) |
| CRITICAL IMPULSE FLASHOVER - (WITHSTAND) | 1005 | (900) |
| RIV AT 115% SYSTEM VOLTAGE | ≤100 μV | |

| DIMENSIONAL VALUES | IN. | MM |
|-------------------------|--------|------|
| SECTION LENGTH (A) | 73.8 | 1874 |
| MAJOR SHED DIAMETER (B) | 2.9 | 73 |
| MINOR SHED DIAMETER (C) | 0 | 0 |
| DRY ARC DISTANCE | 60.4 | 1534 |
| SHEATH THICKNESS | >0.118 | >3 |
| LEAKAGE DISTANCE | 154 | 3911 |
| SHED SPACING (D) | 1.08 | 27.4 |
| CORE ROD DIAMETER | 0.625 | 15.9 |

END FITTINGS AND MATERIALS

LINE END: CHAIN_EYE / GALV STEEL
 TOWER END: CHAIN_EYE / GALV STEEL

NOTES:

1. SILICONE RUBBER SHEATH AND SHEDS. WASHABLE PER IEEE P957
2. ELECTRICAL VALUES PER ANSI C29.12 (IEC 61109 & 62217)

OTHER DETAILS

| | | |
|---------------------|-----------|---------|
| CORONA RING (TOWER) | NONE | |
| CORONA RING (LINE) | NONE | |
| TORQUE REQUIREMENTS | N/A | |
| MOUNTING ANGLE | - | |
| NUMBER OF SHEDS | 56 | |
| WEIGHT | 10.5 lbs. | 4.7 kg. |

CONFIDENTIAL: THIS DRAWING AND ITS CONTENTS ARE CONFIDENTIAL AND THE EXCLUSIVE PROPERTY OF HUBBELL POWER SYSTEMS. NO PUBLICATION, DISTRIBUTION OR COPIES MAY BE MADE WITHOUT THE WRITTEN CONSENT OF HUBBELL POWER SYSTEMS. HUBBELL POWER SYSTEMS UNPUBLISHED ALL RIGHTS RESERVED UNDER THE COPYRIGHT LAWS