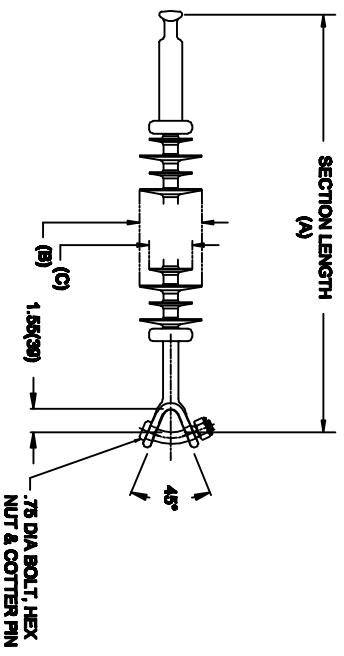


OHIO BRASS QUADRI-SIL SUSPENSION INSULATOR

CAT NO.:	S025069E2010	
REV.:	00	March 4, 2018



HUBBELL POWER SYSTEMS, INC.
 CUSTOMER SERVICE: (573) 682-5521
www.hubbellpowersystems.com



MECHANICAL VALUES	
SPECIFIED TENSILE LOAD (STL)	LBS KN
	25000 111
MAX DESIGN TENSILE LOAD (RTL)	12500 55.5

ELECTRICAL VALUES	
60 HZ DRY FLASHOVER (DRY WITHSTAND)	685 KV
60 HZ WET FLASHOVER (WET WITHSTAND)	630 -
CRITICAL IMPULSE FLASHOVER + (WITHSTAND)	1100 (470)
CRITICAL IMPULSE FLASHOVER - (WITHSTAND)	1130 (990)
RIV AT 115% SYSTEM VOLTAGE	1130 (1015)
	≤100 μV

DIMENSIONAL VALUES	
SECTION LENGTH (A)	IN. MM
	79.9 2029
MAJOR SHED DIAMETER (B)	5.83 148
MINOR SHED DIAMETER (C)	4.61 117
DRY ARC DISTANCE	70.3 1785
SHEATH THICKNESS	>0.118 >3
LEAKAGE DISTANCE	288 7315

END FITTINGS AND MATERIALS

LINE END: ANSI_52-5 BALL / GALV STEEL
 TOWER END: Y-CLEVIS / GALV STEEL

NOTES:

- SILICONE RUBBER SHEATH AND SHEDS, WASHABLE PER IEEE P957
- ELECTRICAL VALUES PER ANSI C29.17 (IEC 61109 & 62217)

OTHER DETAILS

CORONA RING (TOWER)	NONE
CORONA RING (LINE)	NONE
TORQUE REQUIREMENTS	N/A
MOUNTING ANGLE	-
NUMBER OF SHEDS	60
WEIGHT	25.4 lbs. 11.5 kg.