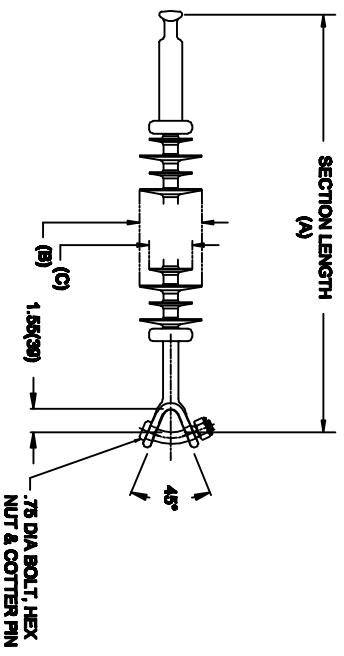


OHIO BRASS QUADRI-SIL SUSPENSION INSULATOR

CAT NO.:	S025072E2010	
REV.:	00	March 4, 2018



HUBBELL POWER SYSTEMS, INC.
 CUSTOMER SERVICE: (573) 682-5521
www.hubbellpowersystems.com



MECHANICAL VALUES

SPECIFIED TENSILE LOAD (STL)	LBS	KN
	25000	111
MAX DESIGN TENSILE LOAD (RTL)	12500	55.5

ELECTRICAL VALUES

60 HZ DRY FLASHOVER (DRY WITHSTAND)	730	KNV
60 HZ WET FLASHOVER (WET WITHSTAND)	665	(495)
CRITICAL IMPULSE FLASHOVER + (WITHSTAND)	1165	(1045)
CRITICAL IMPULSE FLASHOVER - (WITHSTAND)	1205	(1080)
RIV AT 115% SYSTEM VOLTAGE	≤100 μV	

DIMENSIONAL VALUES

SECTION LENGTH (A)	IN.	MM
	84.5	2146
MAJOR SHED DIAMETER (B)	5.83	148
MINOR SHED DIAMETER (C)	4.61	117
DRY ARC DISTANCE	74.9	1902
SHEATH THICKNESS	>0.118	>3
LEAKAGE DISTANCE	307	7797

- END FITTINGS AND MATERIALS**
- LINE END: ANSI_52-5 BALL / GALV STEEL
- TOWER END: Y-CLEVIS / GALV STEEL
- NOTES:**
1. SILICONE RUBBER SHEATH AND SHEDS, WASHABLE PER IEEE P957
 2. ELECTRICAL VALUES PER ANSI C29.17 (IEC 61109 & 62217)

OTHER DETAILS

CORONA RING (TOWER)	NONE
CORONA RING (LINE)	NONE
TORQUE REQUIREMENTS	N/A
MOUNTING ANGLE	-
NUMBER OF SHEDS	64
WEIGHT	26.8 lbs. 12.2 kg.