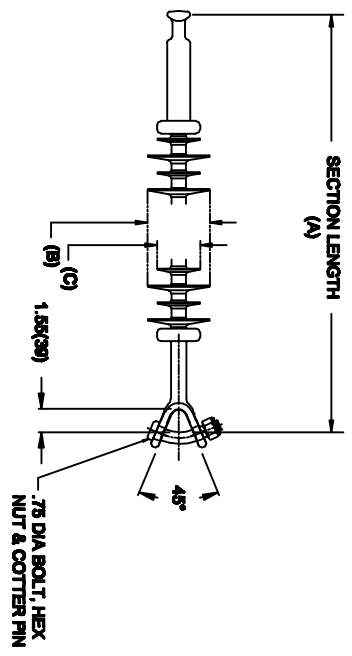


OHIO BRASS QUADRI-SIL SUSPENSION INSULATOR

CAT NO.:	S025081E2010	
REV.:	00	March 4, 2018



HUBBELL POWER SYSTEMS, INC.
 CUSTOMER SERVICE: (573) 682-5521
www.hubbellpowersystems.com



MECHANICAL VALUES

	LBS	KN
SPECIFIED TENSILE LOAD (STL)	25000	111
MAX DESIGN TENSILE LOAD (RTL)	12500	55.5

ELECTRICAL VALUES

	820	735	1305	1345	KV
60 HZ DRY FLASHOVER (DRY WITHSTAND)	820	-	-	-	-
60 HZ WET FLASHOVER (WET WITHSTAND)	735	(550)	-	-	-
CRITICAL IMPULSE FLASHOVER + (WITHSTAND)	1305	(1170)	-	-	-
CRITICAL IMPULSE FLASHOVER - (WITHSTAND)	1345	(1210)	-	-	-
RIV AT 115% SYSTEM VOLTAGE					≤100 μV

DIMENSIONAL VALUES

	IN.	MM
SECTION LENGTH (A)	93.6	2377
MAJOR SHED DIAMETER (B)	5.83	148
MINOR SHED DIAMETER (C)	4.61	117
DRY ARC DISTANCE	84	2133
SHEATH THICKNESS	>0.118	>3
LEAKAGE DISTANCE	346	8788

- END FITTINGS AND MATERIALS**
- LINE END: ANSI_52-5 BALL / GALV STEEL
- TOWER END: Y-CLEVIS / GALV STEEL
- NOTES:**
- SILICONE RUBBER SHEATH AND SHEDS, WASHABLE PER IEEE P957
 - ELECTRICAL VALUES PER ANSI C29.17 (IEC 61109 & 62217)

OTHER DETAILS

CORONA RING (TOWER)	NONE	
CORONA RING (LINE)	NONE	
TORQUE REQUIREMENTS	N/A	
MOUNTING ANGLE	-	
NUMBER OF SHEDS	72	
WEIGHT	29.7 lbs.	13.5 kg.