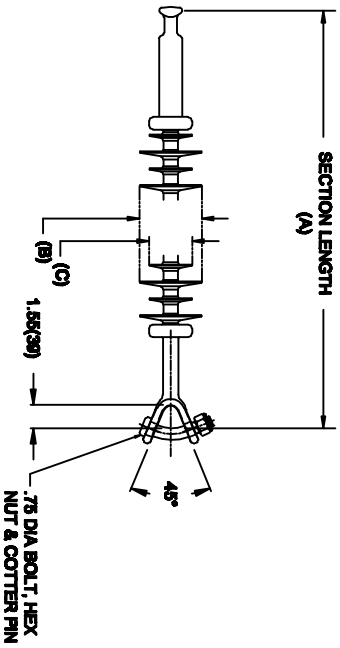


OHIO BRASS QUADRI-SIL SUSPENSION INSULATOR

CAT NO.:	S025095E2010	
REV.:	00	March 4, 2018



HUBBELL POWER SYSTEMS, INC.
 CUSTOMER SERVICE: (573) 682-5521
www.hubbellpowersystems.com



MECHANICAL VALUES		
SPECIFIED TENSILE LOAD (STL)	LBS	KN
	25000	111
MAX DESIGN TENSILE LOAD (RTL)	12500	55.5

ELECTRICAL VALUES		
60 HZ DRY FLASHOVER (DRY WITHSTAND)	955	-
60 HZ WET FLASHOVER (WET WITHSTAND)	835	(625)
CRITICAL IMPULSE FLASHOVER + (WITHSTAND)	1505	(1350)
CRITICAL IMPULSE FLASHOVER - (WITHSTAND)	1555	(1395)
RIV AT 115% SYSTEM VOLTAGE	≤100	μV

DIMENSIONAL VALUES		
SECTION LENGTH (A)	IN.	MM
	107.2	2722
MAJOR SHED DIAMETER (B)	5.83	148
MINOR SHED DIAMETER (C)	4.61	117
DRY ARC DISTANCE	97.7	2481
SHEATH THICKNESS	>0.118	>3
LEAKAGE DISTANCE	404	10261

END FITTINGS AND MATERIALS

LINE END: ANSI_52-5 BALL / GALV STEEL
 TOWER END: Y-CLEVIS / GALV STEEL

NOTES:

- SILICONE RUBBER SHEATH AND SHEDS, WASHABLE PER IEEE P957
- ELECTRICAL VALUES PER ANSI C29.17 (IEC 61109 & 62217)

OTHER DETAILS

CORONA RING (TOWER)	NONE
CORONA RING (LINE)	NONE
TORQUE REQUIREMENTS	N/A
MOUNTING ANGLE	-
NUMBER OF SHEDS	84
WEIGHT	33.9 lbs. 15.4 kg.