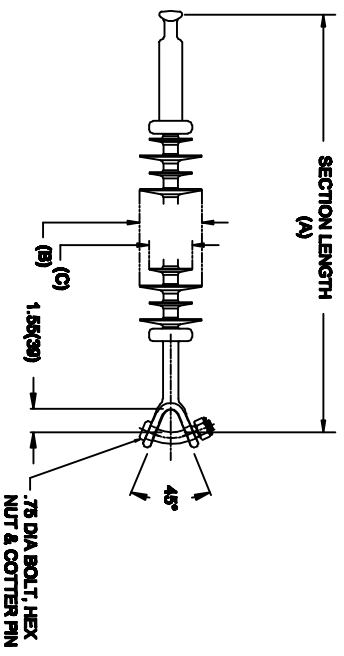


OHIO BRASS QUADRI-SIL SUSPENSION INSULATOR

CAT NO.:	S025100E2010	
REV.:	00	March 4, 2018



HUBBELL POWER SYSTEMS, INC.
 CUSTOMER SERVICE: (573) 682-5521
www.hubbellpowersystems.com



MECHANICAL VALUES

	LBS	KN
SPECIFIED TENSILE LOAD (STL)	25000	111
MAX DESIGN TENSILE LOAD (RTL)	12500	55.5

ELECTRICAL VALUES

	1000 KV	-
60 HZ DRY FLASHOVER (DRY WITHSTAND)	1000	-
60 HZ WET FLASHOVER (WET WITHSTAND)	865	(645)
CRITICAL IMPULSE FLASHOVER + (WITHSTAND)	1575	(1415)
CRITICAL IMPULSE FLASHOVER - (WITHSTAND)	1620	(1455)
RIV AT 115% SYSTEM VOLTAGE	≤100 μV	

DIMENSIONAL VALUES

	IN.	MM
SECTION LENGTH (A)	111.8	2839
MAJOR SHED DIAMETER (B)	5.83	148
MINOR SHED DIAMETER (C)	4.61	117
DRY ARC DISTANCE	102.2	2595
SHEATH THICKNESS	>0.118	>3
LEAKAGE DISTANCE	423	10744

- END FITTINGS AND MATERIALS**
 LINE END: ANSI_52-5 BALL / GALV STEEL
 TOWER END: Y-CLEVIS / GALV STEEL
- NOTES:**
 1. SILICONE RUBBER SHEATH AND SHEDS, WASHABLE PER IEEE P957
 2. ELECTRICAL VALUES PER ANSI C29.17 (IEC 61109 & 62217)

OTHER DETAILS

CORONA RING (TOWER)	NONE	
CORONA RING (LINE)	NONE	
TORQUE REQUIREMENTS	N/A	
MOUNTING ANGLE	-	
NUMBER OF SHEDS	88	
WEIGHT	35.3 lbs.	16 kg.