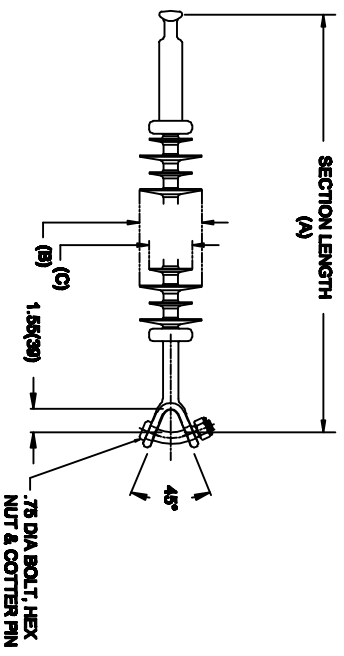


# OHIO BRASS QUADRI-SIL SUSPENSION INSULATOR

CAT NO.:	S025109E2010	
REV.:	00	March 4, 2018



HUBBELL POWER SYSTEMS, INC.  
 CUSTOMER SERVICE: (573) 682-5521  
[www.hubbellpowersystems.com](http://www.hubbellpowersystems.com)



**MECHANICAL VALUES**

SPECIFIED TENSILE LOAD (STL)	LBS	KN
	25000	111
MAX DESIGN TENSILE LOAD (RTL)	12500	55.5

**ELECTRICAL VALUES**

60 HZ DRY FLASHOVER (DRY WITHSTAND)	1090	KV
60 HZ WET FLASHOVER (WET WITHSTAND)	925	(690)
CRITICAL IMPULSE FLASHOVER + (WITHSTAND)	1710	(1535)
CRITICAL IMPULSE FLASHOVER - (WITHSTAND)	1755	(1575)
RIV AT 115% SYSTEM VOLTAGE	≤100	μV

**DIMENSIONAL VALUES**

SECTION LENGTH (A)	IN.	MM
MAJOR SHED DIAMETER (B)	120.9	3070
MINOR SHED DIAMETER (C)	5.83	148
DRY ARC DISTANCE	4.61	117
SHEATH THICKNESS	111.3	2827
LEAKAGE DISTANCE	>0.118	>3
	461	11709

- END FITTINGS AND MATERIALS**
- LINE END: ANSI\_52-5 BALL / GALV STEEL
- TOWER END: Y-CLEVIS / GALV STEEL
- NOTES:**
1. SILICONE RUBBER SHEATH AND SHEDS, WASHABLE PER IEEE P957
  2. ELECTRICAL VALUES PER ANSI C29.17 (IEC 61109 & 62217)

**OTHER DETAILS**

CORONA RING (TOWER)	NONE
CORONA RING (LINE)	NONE
TORQUE REQUIREMENTS	N/A
MOUNTING ANGLE	-
NUMBER OF SHEDS	96
WEIGHT	38.1 lbs. / 17.3 kg.