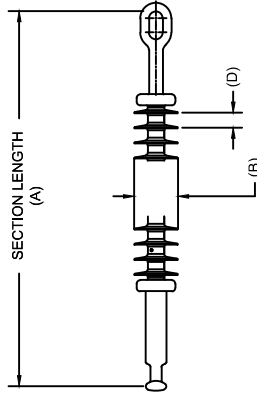


OHIO BRASS QUADRI\*SIL SUSPENSION INSULATOR

CAT NO.: S030064S0010	
REV: 00	March 4, 2018



HUBBELL POWER SYSTEMS, INC.  
 CUSTOMER SERVICE: (573) 682-5521  
 www.hubbellpowersystems.com



MECHANICAL VALUES	LBS	KN
SPECIFIED TENSILE LOAD (STL)	30000	133
MAX DESIGN TENSILE LOAD (RTL)	15000	66.5

ELECTRICAL VALUES	KV
60 HZ DRY FLASHOVER (DRY WITHSTAND)	660 -
60 HZ WET FLASHOVER (WET WITHSTAND)	615 (460)
CRITICAL IMPULSE FLASHOVER + (WITHSTAND)	1065 (955)
CRITICAL IMPULSE FLASHOVER - (WITHSTAND)	1075 (965)
RIV AT 115% SYSTEM VOLTAGE	≤100 μV

DIMENSIONAL VALUES	IN.	MM
SECTION LENGTH (A)	76.5	1943
MAJOR SHED DIAMETER (B)	2.9	73
MINOR SHED DIAMETER (C)	0	0
DRY ARC DISTANCE	64.7	1643
SHEATH THICKNESS	>0.118	>3
LEAKAGE DISTANCE	165	4191
SHED SPACING (D)	1.08	27.4
CORE ROD DIAMETER	0.625	15.9

END FITTINGS AND MATERIALS

LINE END: ANSI\_52-5\_BALL / GALV STEEL  
 TOWER END: CHAIN\_EYE / GALV STEEL

NOTES:

- SILICONE RUBBER SHEATH AND SHEDS. WASHABLE PER IEEE P957
- ELECTRICAL VALUES PER ANSI C29.12 (IEC 61109 & 62217)

OTHER DETAILS

CORONA RING (TOWER)	NONE	4.7 kg.
CORONA RING (LINE)	NONE	
TORQUE REQUIREMENTS	N/A	
MOUNTING ANGLE	-	
NUMBER OF SHEDS	60	
WEIGHT	10.4 lbs.	