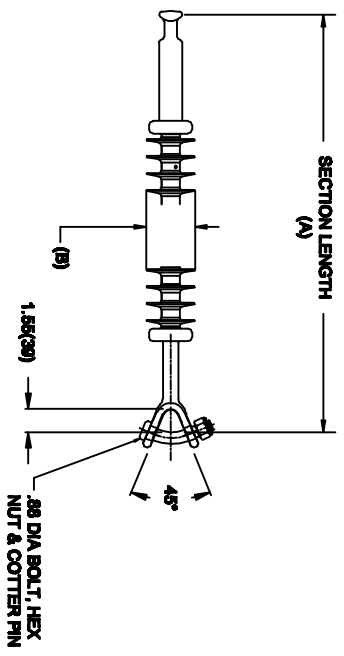


OHIO BRASS QUADRI-SIL SUSPENSION INSULATOR

CAT NO.:	S050030S2010	
REV.:	00	March 4, 2018



HUBBELL POWER SYSTEMS, INC.
 CUSTOMER SERVICE: (573) 682-5521
www.hubbellpowersystems.com



MECHANICAL VALUES

SPECIFIED TENSILE LOAD (STL)	LBS	KN
	50000	222
MAX DESIGN TENSILE LOAD (RTL)	25000	111

ELECTRICAL VALUES

60 HZ DRY FLASHOVER (DRY WITHSTAND)	320	KV
60 HZ WET FLASHOVER (WET WITHSTAND)	305	(225)
CRITICAL IMPULSE FLASHOVER + (WITHSTAND)	525	(470)
CRITICAL IMPULSE FLASHOVER - (WITHSTAND)	510	(455)
RIV AT 115% SYSTEM VOLTAGE	≤100 μV	

DIMENSIONAL VALUES

SECTION LENGTH (A)	IN.	MM
	44.4	1127
MAJOR SHED DIAMETER (B)	3.1	78
MINOR SHED DIAMETER (C)	0	0
DRY ARC DISTANCE	30.3	769
SHEATH THICKNESS	>0.118	>3
LEAKAGE DISTANCE	77	1955

- END FITTINGS AND MATERIALS**
- LINE END: ANSI_52-11_BALL / GALV STEEL
- TOWER END: Y-CLEVIS / GALV STEEL
- NOTES:**
1. SILICONE RUBBER SHEATH AND SHEDS, WASHABLE PER IEEE P957
 2. ELECTRICAL VALUES PER ANSI C29.17 (IEC 61109 & 62217)

OTHER DETAILS

CORONA RING (TOWER)	NONE
CORONA RING (LINE)	NONE
TORQUE REQUIREMENTS	N/A
MOUNTING ANGLE	-
NUMBER OF SHEDS	28
WEIGHT	10.6 lbs. 4.8 kg.