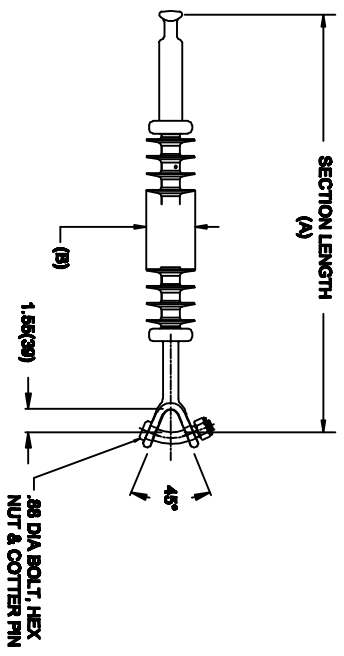


# OHIO BRASS QUADRI-SIL SUSPENSION INSULATOR

CAT NO.:	S050064S2010	
REV:	00	March 4, 2018



HUBBELL POWER SYSTEMS, INC.  
 CUSTOMER SERVICE: (573) 682-5521  
[www.hubbellpowersystems.com](http://www.hubbellpowersystems.com)



**MECHANICAL VALUES**

SPECIFIED TENSILE LOAD (STL)	LBS	KN
	50000	222
MAX DESIGN TENSILE LOAD (RTL)	25000	111

**ELECTRICAL VALUES**

60 HZ DRY FLASHOVER (DRY WITHSTAND)	660	KV
60 HZ WET FLASHOVER (WET WITHSTAND)	615	(460)
CRITICAL IMPULSE FLASHOVER + (WITHSTAND)	1065	(955)
CRITICAL IMPULSE FLASHOVER - (WITHSTAND)	1075	(965)
RIV AT 115% SYSTEM VOLTAGE	≤100 μV	

**DIMENSIONAL VALUES**

SECTION LENGTH (A)	IN.	MM
	78.9	2004
MAJOR SHED DIAMETER (B)	3.1	78
MINOR SHED DIAMETER (C)	0	0
DRY ARC DISTANCE	64.8	1645
SHEATH THICKNESS	>0.118	>3
LEAKAGE DISTANCE	165	4191

- END FITTINGS AND MATERIALS**
- LINE END: ANSI\_52-11\_BALL / GALV STEEL
- TOWER END: Y-CLEVIS / GALV STEEL
- NOTES:**
1. SILICONE RUBBER SHEATH AND SHEDS, WASHABLE PER IEEE P957
  2. ELECTRICAL VALUES PER ANSI C29.17 (IEC 61109 & 62217)

**OTHER DETAILS**

CORONA RING (TOWER)	NONE
CORONA RING (LINE)	NONE
TORQUE REQUIREMENTS	N/A
MOUNTING ANGLE	-
NUMBER OF SHEDS	60
WEIGHT	14.7 lbs. 6.7 kg.