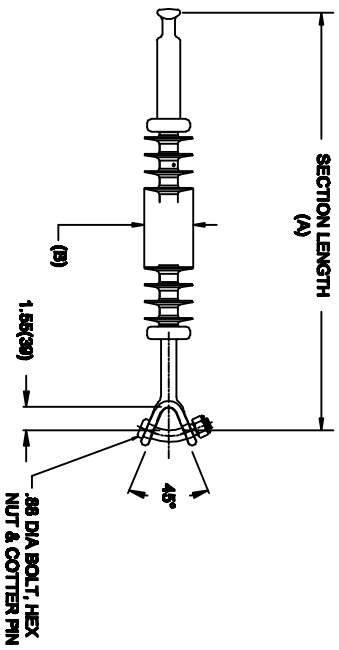


OHIO BRASS QUADRI-SIL SUSPENSION INSULATOR

CAT NO.:	S050073S2010	
REV.:	00	March 4, 2018



HUBBELL POWER SYSTEMS, INC.
 CUSTOMER SERVICE: (573) 682-5521
www.hubbellpowersystems.com



MECHANICAL VALUES		
SPECIFIED TENSILE LOAD (STL)	LBS	KN
	50000	222
MAX DESIGN TENSILE LOAD (RTL)	25000	111

ELECTRICAL VALUES		
60 HZ DRY FLASHOVER (DRY WITHSTAND)	735	-
60 HZ WET FLASHOVER (WET WITHSTAND)	685	(510)
CRITICAL IMPULSE FLASHOVER + (WITHSTAND)	1200	(1080)
CRITICAL IMPULSE FLASHOVER - (WITHSTAND)	1210	(1085)
RIV AT 115% SYSTEM VOLTAGE	≤100	μV

DIMENSIONAL VALUES		
SECTION LENGTH (A)	IN.	MM
	87.6	2225
MAJOR SHED DIAMETER (B)	3.1	78
MINOR SHED DIAMETER (C)	0	0
DRY ARC DISTANCE	73.5	1866
SHEATH THICKNESS	>0.118	>3
LEAKAGE DISTANCE	187	4749

END FITTINGS AND MATERIALS

LINE END: ANSI_52-11_BALL / GALV STEEL
 TOWER END: Y-CLEVIS / GALV STEEL

NOTES:

- SILICONE RUBBER SHEATH AND SHEDS, WASHABLE PER IEEE P957
- ELECTRICAL VALUES PER ANSI C29.17 (IEC 61109 & 62217)

OTHER DETAILS

CORONA RING (TOWER)	NONE
CORONA RING (LINE)	NONE
TORQUE REQUIREMENTS	N/A
MOUNTING ANGLE	-
NUMBER OF SHEDS	68
WEIGHT	15.8 lbs. 7.2 kg.