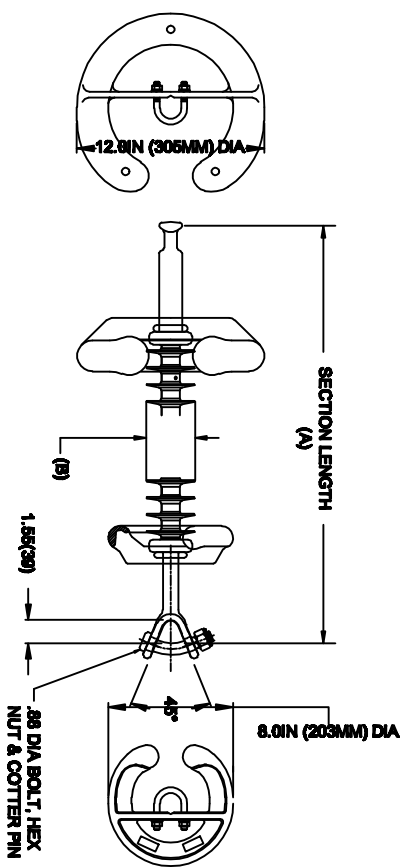


# OHIO BRASS QUADRI-SIL SUSPENSION INSULATOR

CAT NO.:	S050105S201C
REV.:	00 March 4, 2018



HUBBELL POWER SYSTEMS, INC.  
 CUSTOMER SERVICE: (573) 682-5521  
[www.hubbellpowersystems.com](http://www.hubbellpowersystems.com)



## END FITTINGS AND MATERIALS

TOWER END: ANSI\_52-11\_BALL / GALV STEEL  
 LINE END: Y-CLEVIS / GALV STEEL

## NOTES:

1. SILICONE RUBBER SHEATH AND SHEDS, WASHABLE PER IEEE P957
2. ELECTRICAL VALUES PER ANSI C29.17 (IEC 61109 & 62217)
3. CORONA RING SHIPPED WITH BUT NOT ATTACHED TO INSULATOR.

<b>MECHANICAL VALUES</b>		
MAX DESIGN TENSILE LOAD (RTL)	LBS	KN
	50000	222
SPECIFIED TENSILE LOAD (STL)	25000	111

<b>ELECTRICAL VALUES</b>		
60 HZ DRY FLASHOVER (DRY WITHSTAND)	980	KV
60 HZ WET FLASHOVER (WET WITHSTAND)	885	(660)
CRITICAL IMPULSE FLASHOVER + (WITHSTAND)	1635	(1470)
CRITICAL IMPULSE FLASHOVER - (WITHSTAND)	1685	(1495)
RIV AT 115% SYSTEM VOLTAGE	≤100	μV

<b>DIMENSIONAL VALUES</b>		
SECTION LENGTH (A)	IN.	MM
	120	3048
MAJOR SHED DIAMETER (B)	3.1	78
MINOR SHED DIAMETER (C)	0	0
DRY ARC DISTANCE	103.9	2639
SHEATH THICKNESS	>0.118	>3
LEAKAGE DISTANCE	270	6858

## OTHER DETAILS

CORONA RING (TOWER)	271761-3002	8.0 IN
CORONA RING (LINE)	271705-3002	12.0 IN
TORQUE REQUIREMENTS	10	ft.-lb
MOUNTING ANGLE	-	
NUMBER OF SHEDS	98	
WEIGHT	24.7	lbs. / 11.2 kg.