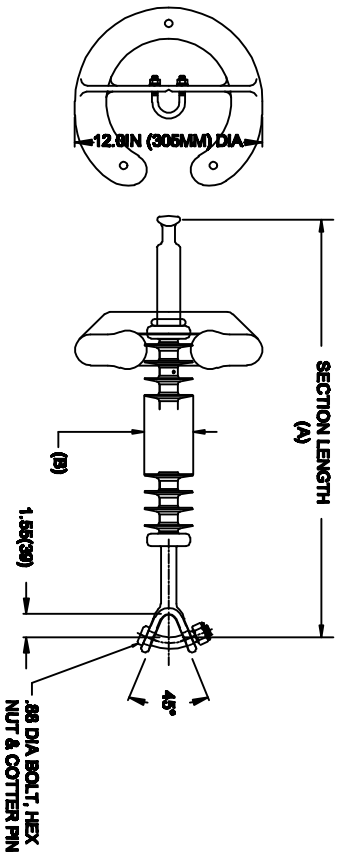


OHIO BRASS QUADRI-SIL SUSPENSION INSULATOR

CAT NO.:	S050110S201B
REV.:	00 March 4, 2018



HUBBELL POWER SYSTEMS, INC.
 CUSTOMER SERVICE: (573) 682-5521
www.hubbellpowersystems.com



MECHANICAL VALUES	
MAX DESIGN TENSILE LOAD (RTL)	LBS KN
	50000 222
SPECIFIED TENSILE LOAD (STL)	LBS KN
	25000 111

ELECTRICAL VALUES	
60 HZ DRY FLASHOVER (DRY WITHSTAND)	1010 KV
60 HZ WET FLASHOVER (WET WITHSTAND)	925 (690)
CRITICAL IMPULSE FLASHOVER + (WITHSTAND)	1705 (1530)
CRITICAL IMPULSE FLASHOVER - (WITHSTAND)	1740 (1565)
RIV AT 115% SYSTEM VOLTAGE	≤100 μV

DIMENSIONAL VALUES	
SECTION LENGTH (A)	IN. MM
	124.3 3157
MAJOR SHED DIAMETER (B)	IN. MM
	3.1 78
MINOR SHED DIAMETER (C)	IN. MM
	0 0
DRY ARC DISTANCE	IN. MM
	108.8 2763
SHEATH THICKNESS	IN. MM
	>0.118 >3
LEAKAGE DISTANCE	IN. MM
	281 7137

END FITTINGS AND MATERIALS

TOWER END: ANSI_52-11_BALL / GALV STEEL
 LINE END: Y-CLEVIS / GALV STEEL

NOTES:

1. SILICONE RUBBER SHEATH AND SHEDS, WASHABLE PER IEEE P957
2. ELECTRICAL VALUES PER ANSI C29.17 (IEC 61109 & 62217)
3. CORONA RING SHIPPED WITH BUT NOT ATTACHED TO INSULATOR.

OTHER DETAILS

CORONA RING (TOWER)	NONE
CORONA RING (LINE)	271705-3002 12.0 IN
TORQUE REQUIREMENTS	10 ft.-lb
MOUNTING ANGLE	-
NUMBER OF SHEDS	102
WEIGHT	23.1 lbs. 10.5 kg.