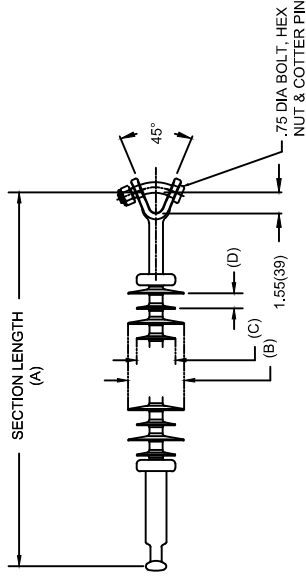


OHIO BRASS QUADRI*SIL SUSPENSION INSULATOR

CAT NO.: S120023H2070	
REV: 00	March 4, 2018



HUBBELL POWER SYSTEMS, INC.
 CUSTOMER SERVICE: (573) 682-5521
 www.hubbellpowersystems.com



MECHANICAL VALUES	LBS	KN
SPECIFIED TENSILE LOAD (STL)	27000	120
MAX DESIGN TENSILE LOAD (RTL)	13500	60

ELECTRICAL VALUES	KV
60 HZ DRY FLASHOVER (DRY WITHSTAND)	250 -
60 HZ WET FLASHOVER (WET WITHSTAND)	235 (175)
CRITICAL IMPULSE FLASHOVER + (WITHSTAND)	415 (370)
CRITICAL IMPULSE FLASHOVER - (WITHSTAND)	395 (355)
RIV AT 115% SYSTEM VOLTAGE	≤100 μV

DIMENSIONAL VALUES	IN.	MM
SECTION LENGTH (A)	36	914
MAJOR SHED DIAMETER (B)	4	101
MINOR SHED DIAMETER (C)	208	71
DRY ARC DISTANCE	24.1	612
SHEATH THICKNESS	>0.118	>3
LEAKAGE DISTANCE	71	1803
SHED SPACING (D)	1.08	27.4
CORE ROD DIAMETER	0.625	15.9

END FITTINGS AND MATERIALS

LINE END: IEC_BALL / GALV STEEL
 TOWER END: Y-CLEVIS / GALV STEEL

NOTES:

- SILICONE RUBBER SHEATH AND SHEDS. WASHABLE PER IEEE P957
- ELECTRICAL VALUES PER ANSI C29.12 (IEC 61109 & 62217)

OTHER DETAILS

CORONA RING (TOWER)	NONE
CORONA RING (LINE)	NONE
TORQUE REQUIREMENTS	N/A
MOUNTING ANGLE	-
NUMBER OF SHEDS	22
WEIGHT	7.1 lbs. 3.2 kg.