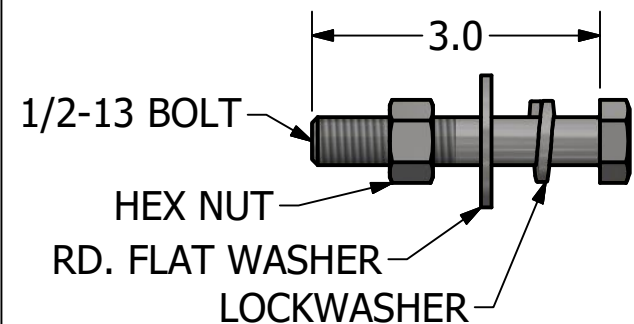
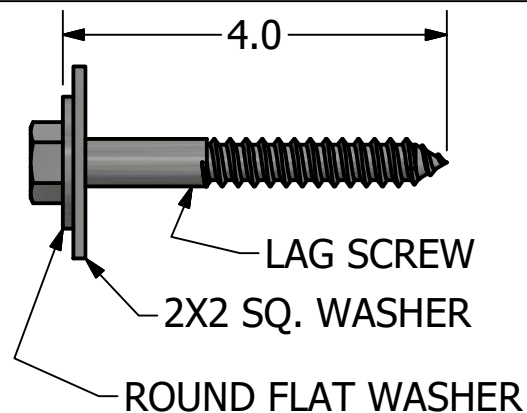


| CATALOG NUMBER | DESCRIPTION / SIZE          |
|----------------|-----------------------------|
| PSCDLCU375500B | CLAMPS + BOLT KIT .375-.500 |
| PSCDLCU500625B | CLAMPS + BOLT KIT .500-.625 |
| PSCDLCU625750B | CLAMPS + BOLT KIT .625-.750 |
| PSCDLCU750875B | CLAMPS + BOLT KIT .750-.875 |
| PSCDLCU875100B | CLAMPS + BOLT KIT .875-1.00 |
| PSCDLCU100120B | CLAMPS + BOLT KIT 1.00-1.20 |



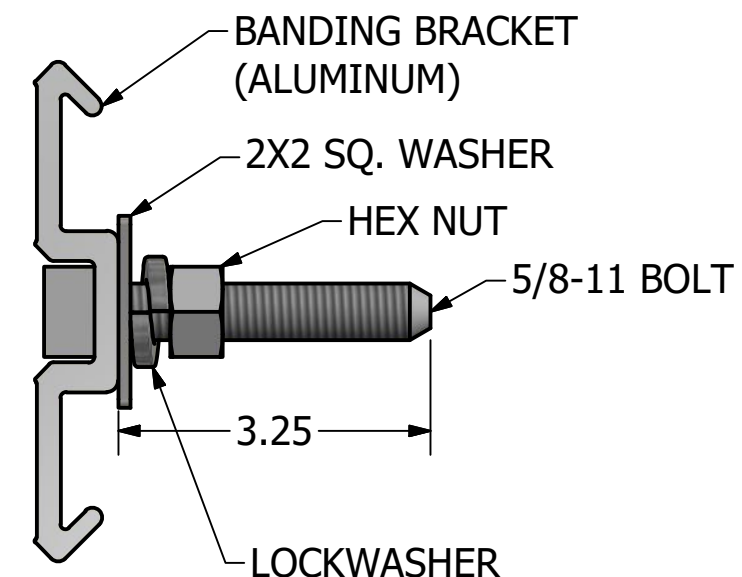
PSE4040215P BOLT KIT ONLY

| CATALOG NUMBER | DESCRIPTION / SIZE               |
|----------------|----------------------------------|
| PSCDLCU375500L | CLAMPS + LAG SCREW KIT .375-.500 |
| PSCDLCU500625L | CLAMPS + LAG SCREW KIT .500-.625 |
| PSCDLCU625750L | CLAMPS + LAG SCREW KIT .625-.750 |
| PSCDLCU750875L | CLAMPS + LAG SCREW KIT .750-.875 |
| PSCDLCU875100L | CLAMPS + LAG SCREW KIT .875-1.00 |
| PSCDLCU100120L | CLAMPS + LAG SCREW KIT 1.00-1.20 |



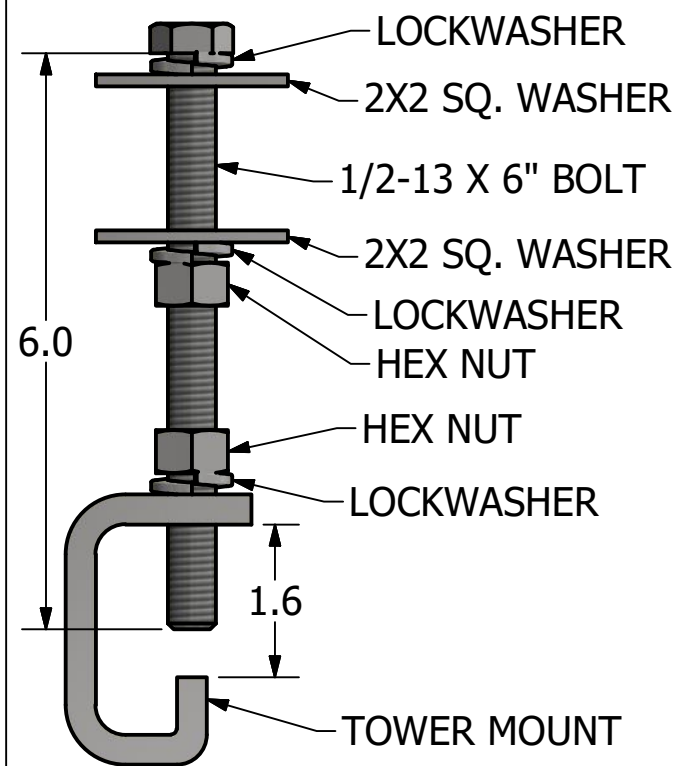
PSE4040212P LAG SCREW KIT ONLY

| CATALOG NUMBER | DESCRIPTION / SIZE                             |
|----------------|--|
| PSCDLCU375500S | CLAMPS + STAINLESS STEEL BANDING KIT .375-.500 |
| PSCDLCU500625S | CLAMPS + STAINLESS STEEL BANDING KIT .500-.625 |
| PSCDLCU625750S | CLAMPS + STAINLESS STEEL BANDING KIT .625-.750 |
| PSCDLCU750875S | CLAMPS + STAINLESS STEEL BANDING KIT .750-.875 |
| PSCDLCU875100S | CLAMPS + STAINLESS STEEL BANDING KIT .875-1.00 |
| PSCDLCU100120S | CLAMPS + STAINLESS STEEL BANDING KIT 1.00-1.20 |



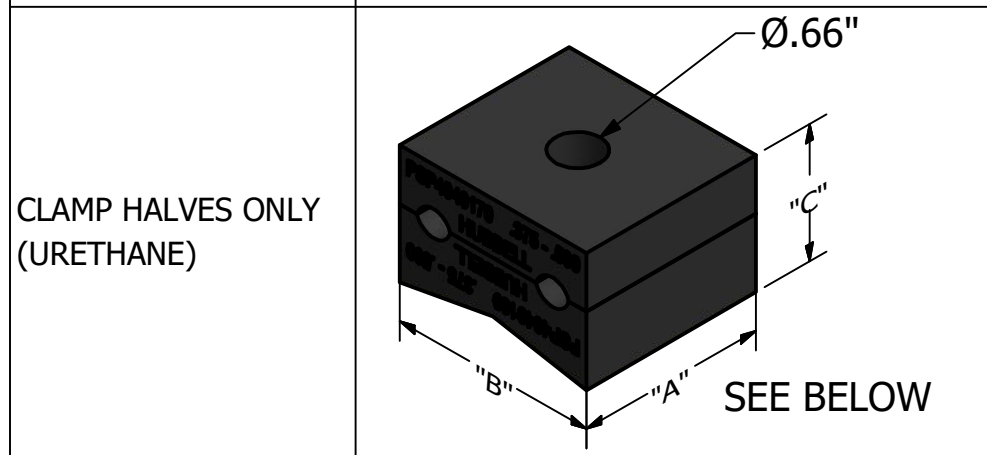
PSE4040213P BANDING KIT ONLY

| CATALOG NUMBER | DESCRIPTION / SIZE           |
|----------------|------------------------------|
| PSCDLCU375500T | CLAMPS + TOWER KIT .375-.500 |
| PSCDLCU500625T | CLAMPS + TOWER KIT .500-.625 |
| PSCDLCU625750T | CLAMPS + TOWER KIT .625-.750 |
| PSCDLCU750875T | CLAMPS + TOWER KIT .750-.875 |
| PSCDLCU875100T | CLAMPS + TOWER KIT .875-1.00 |
| PSCDLCU100120T | CLAMPS + TOWER KIT 1.00-1.20 |



PSE4040214P TOWER KIT ONLY

| CATALOG NUMBER | DESCRIPTION / SIZE        |
|----------------|---------------------------|
| PSCDLCU375500  | DOWNLEAD CLAMPS .375-.500 |
| PSCDLCU500625  | DOWNLEAD CLAMPS .500-.625 |
| PSCDLCU625750  | DOWNLEAD CLAMPS .625-.750 |
| PSCDLCU750875  | DOWNLEAD CLAMPS .750-.875 |
| PSCDLCU875100  | DOWNLEAD CLAMPS .875-1.00 |
| PSCDLCU100120  | DOWNLEAD CLAMPS 1.00-1.20 |



| CLAMP DIMENSIONS |       |       |       |
|------------------|-------|-------|-------|
| CABLE SIZE       | " A " | " B " | " C " |
| .375-.500        | 2.5"  | 2.75" | 1.75" |
| .500-.625        | 2.5"  | 2.75" | 1.75" |
| .625-.750        | 2.5"  | 2.75" | 1.75" |
| .750-.875        | 2.5"  | 3.69" | 2.25" |
| .875-1.00        | 2.5"  | 3.69" | 2.25" |
| 1.00-1.20        | 2.5"  | 3.69" | 2.25" |

### FEATURES AND APPLICATIONS:

- FOR AD AND OPGW FIBER OPTIC CABLES.
- DOWNLEAD CLAMP WITH URETHANE RUBBER HALVES SECURES CABLES TO STRUCTURE WITHOUT DAMAGING FIBERS.
- BASE HALF DESIGNED FOR CURVED AND FLAT SURFACES AND ACCEPTS UP TO 5/8" BOLT.
- CLAMPS AVAILABLE FOR CABLE DIAMETERS FROM 0.375"(9.5mm) UP TO 1.20"(30.5mm).
- ALL HARDWARE GALVANIZED STEEL UNLESS NOTED.

|   |  |                              |                 |
|---|--|------------------------------|-----------------|
| <h1>CHANCE®</h1>  | <b>HUBBELL POWER SYSTEMS, INC.</b>           |                              |                 |
|   | <b>DOWNLEAD CLAMPS, URETHANE INFORMATION</b> |                              |                 |
| CONFIDENTIAL: THIS DRAWING AND ITS CONTENTS ARE CONFIDENTIAL AND THE EXCLUSIVE PROPERTY OF HUBBELL POWER SYSTEMS. NO PUBLICATION, DISTRIBUTION, OR COPIES MAY BE MADE WITHOUT THE WRITTEN CONSENT OF HUBBELL POWER SYSTEMS. HUBBELL POWER SYSTEMS UNPUBLISHED ALL RIGHTS RESERVED UNDER THE COPYRIGHT LAWS. | TITLE<br><b>SEE CHARTS</b>                   | DWG NO.<br><b>SA-PSCDLCU</b> | REV<br><b>A</b> |
| DO NOT SCALE THIS DRAWING   | DRN BY RAM                                   | DATE 4/27/18                 | SHEET 1 OF 1    |