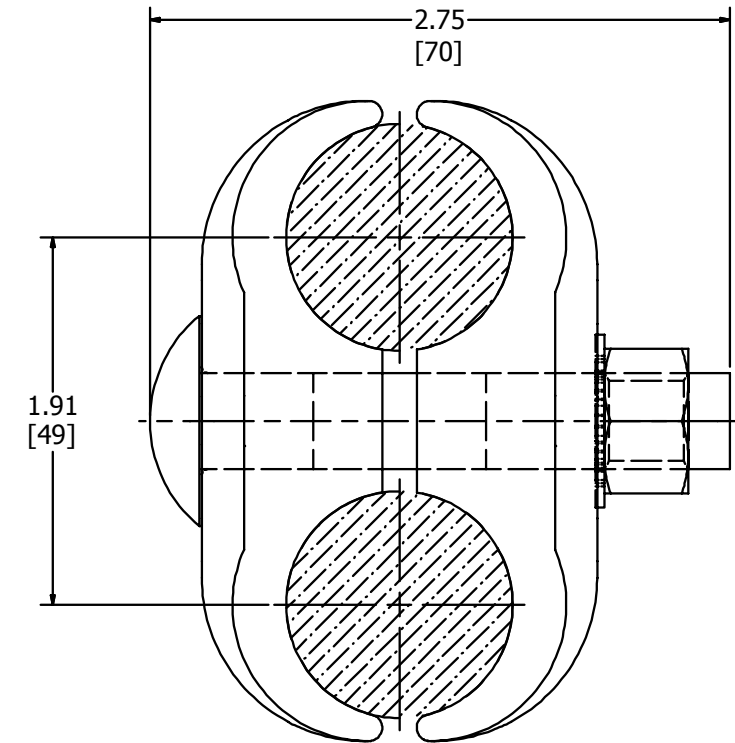
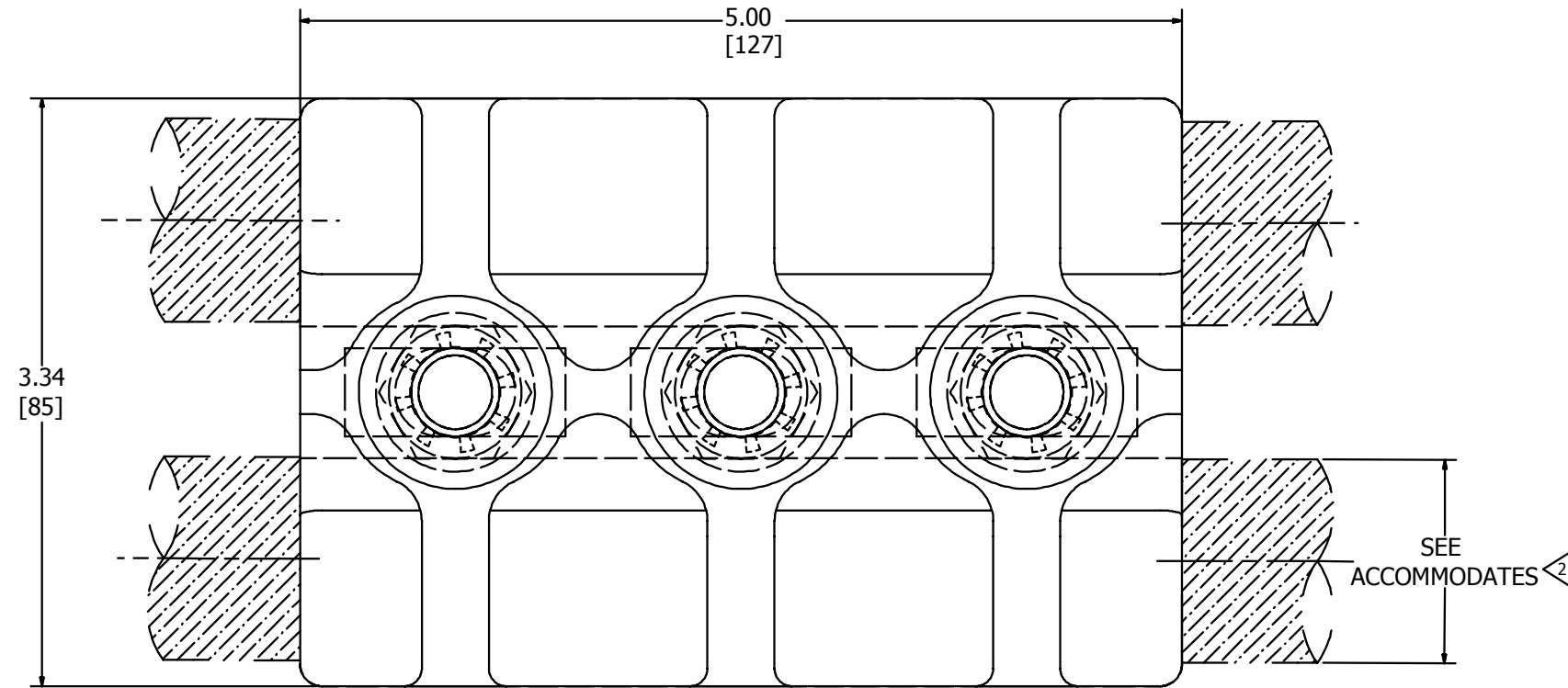


REV	DATE	DESCRIPTION	ECO	BY	C'H'K.
A	08/06/2012	REDRAW IN INVENTOR	28348	SV	MB



**NOTES:**

- MATERIAL :  
CAST COPPER ALLOY # 116.
- ACCOMMODATES :  
(2)1000 kcmil 1.152 [29] DIA.
- NOMINAL INSTALLATION TORQUE :  
1/2" HEX. SILICON BRONZE HARDWARE 480 IN-LBS [55 Nm].
- DIMENSIONS IN BRACKETS [ ] ARE IN MILLIMETERS ROUNDED OFF TO THE NEAREST MILLIMETER, UNLESS OTHERWISE SPECIFIED AND ARE FOR REFERENCE ONLY.
- MARKING :  
BURNDY  
CP4444

TO ORDER BURNDY® PRODUCTS CALL		PARALLEL CLAMP	
UNITED STATES 1-800-346-4175 (LONDONDERRY, NH)		ITEM NO: 25021242	
CANADA: 1-800-361-6975 (QUEBEC) 1-800-387-6487 (ALL OTHER PROVINCES)		CAT. NO: CP4444	
FOR PRODUCT INFO: <a href="http://www.burndy.com">http://www.burndy.com</a>		DRAWN BY: SENTHIL 8/6/2012	
		CHECKER: --	
		DSN APRVL: --	
		MFG APRVL: --	
		QA APRVL: --	
		MKT APRVL: --	
		PROD FAM: --	
		PROJECT #: --	
		DOCUMENT TYPE: SALES	
		REL LEVEL: Released	
		SIZE	DRAWING NO
		D	SA005802-01
			REV
			A
		SHEET 1 OF 1	