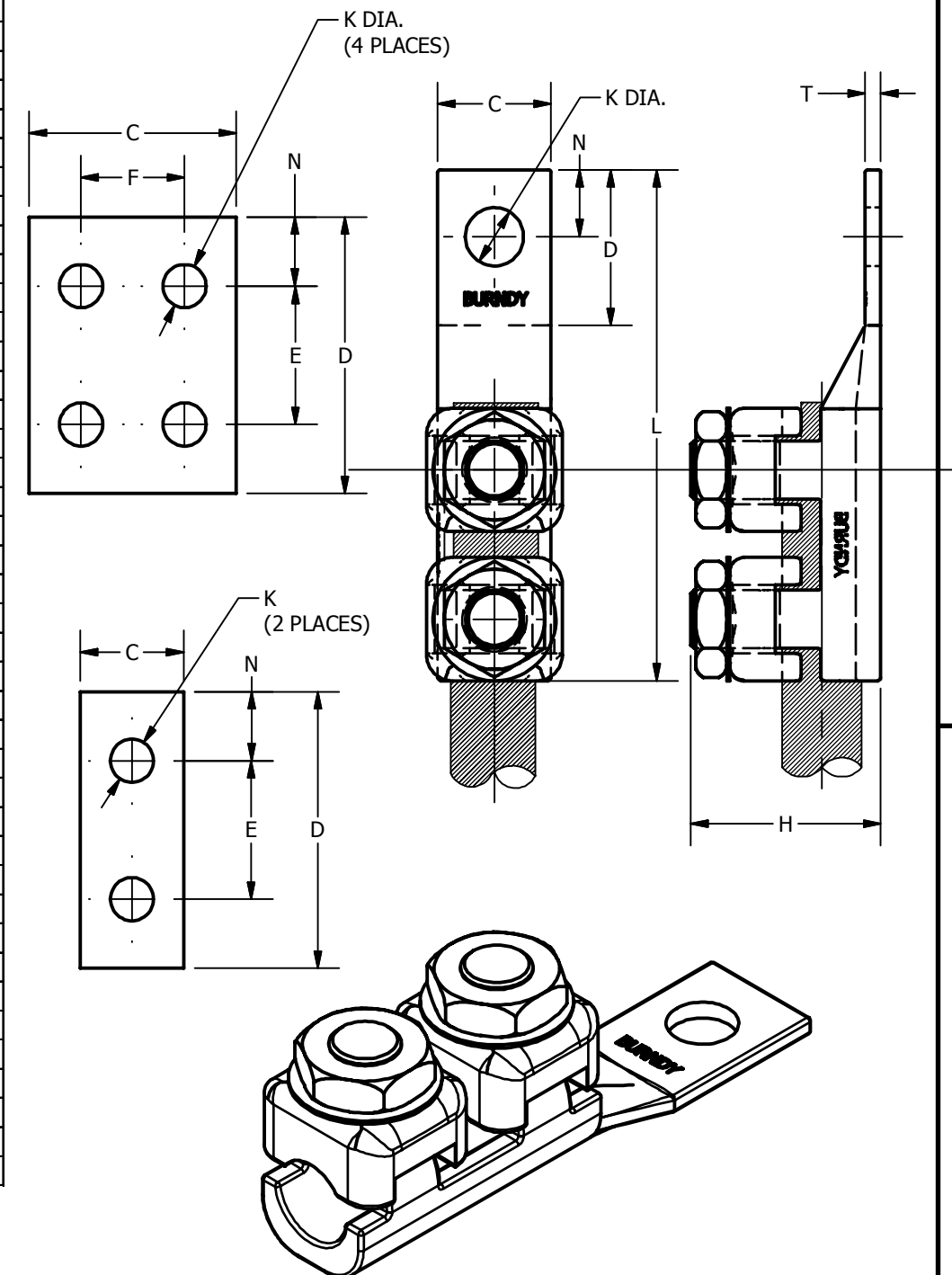


CATALOG NO.	CABLE RANGE				NO. OF HOLES IN PAD	APPROX. SHIP. WT. IN LBS	DIMENSIONS IN INCHES								TORQUE IN-LBS
	COMMERCIAL AWG		NAVY				C	D	E & F	H	K	L	N	T	
	MI N.	MAX.	MI N.	MAX.											
QQA8C	#14 SOL.	#8 STR	3	14	1	0.15	9/16	9/16	-	11/16	7/32	2 5/16	9/32	5/32	75
QQA8C-2	#14 SOL	#8 STR	3	14	2	0.16	9/16	1 3/16	5/8	11/16	7/32	2 15/16	5/16	5/32	75
QQA4C	#6 SOL.	#4 STR	23	40	1	0.15	5/8	5/8	-	3/4	9/32	2 3/8	5/16	3/16	110
QQA4C-2	#6 SOL.	#4 STR	23	40	2	0.16	5/8	1 3/16	5/8	3/4	9/32	2 15/16	5/16	3/16	110
QQA4C-2N	#8 STR	#4 STR	23	40	2	0.23	1	3	1 3/4	3/4	9/16	4 3/4	5/8	3/16	110
QQA1C	#4 STR	#1 STR	40	75	1	0.23	5/8	3/4	-	1	9/32	2 13/16	11/32	7/32	150
QQA1C-2	#4 STR	#1 STR	40	75	2	0.26	5/8	1 9/16	7/8	1	11/32	3 5/8	11/32	7/32	150
QQA1C-2N	#4 STR	#1 STR	40	75	2	0.33	1	3	1 3/4	1	9/16	5 1/16	5/8	7/32	150
QQA26	1/0 STR	2/0 STR	100	125	1	0.42	13/16	15/16	-	1 1/8	13/32	3 3/16	7/16	7/32	180
QQA26-2	1/0 STR	2/0 STR	100	125	2	0.47	13/16	1 15/16	1	1 1/8	13/32	4 3/16	7/16	7/32	180
QQA26-2N	1/0 STR	2/0 STR	100	125	2	0.54	1	3 1/8	1 3/4	1 1/16	9/16	5 3/8	5/8	7/32	180
QQA28	3/0 STR	4/0 STR	150	200	1	0.47	1	1 1/16	-	1 5/16	13/32	3 9/16	17/32	1/4	250
QQA28-2	3/0 STR	4/0 STR	150	200	2	0.54	1	2	1	1 5/16	13/32	4 1/2	7/16	1/4	250
QQA28-2N	3/0 STR	4/0 STR	150	200	2	0.61	1	3 1/8	1 3/4	1 5/16	9/16	5 5/8	5/8	1/4	250
QQA31	250 kcmil	350 kcmil	250	350	1	0.90	1 3/16	1 3/8	-	1 11/16	17/32	4 1/8	11/16	5/16	325
QQA31-2	250 kcmil	350 kcmil	250	350	2	0.98	1 3/16	2	1	1 11/16	13/32	4 3/4	7/16	5/16	325
QQA31-2N	250 kcmil	350 kcmil	250	350	2	1.1	1 3/16	3 1/8	1 3/4	1 11/16	9/16	5 7/8	5/8	5/16	325
QQA34	400 kcmil	500 kcmil	400	500	1	1.4	1 3/8	1 5/8	-	2	17/32	4 7/8	13/16	5/16	375
QQA34-2	400 kcmil	500 kcmil	400	500	2	1.4	1 3/8	2	1	2	13/32	5 1/4	7/16	5/16	375
QQA34-2N	400 kcmil	500 kcmil	400	500	2	1.6	1 3/8	3 1/8	1 3/4	2	9/16	6 3/8	5/8	5/16	375
QQA34-4	400 kcmil	500 kcmil	400	500	4	1.5	1 7/8	1 15/16	1	2	7/16	5 3/16	7/16	5/16	375
QQA40	600 kcmil	800 kcmil	650	800	1	2.3	1 5/8	1 7/8	-	2 5/16	11/16	5 11/16	15/16	3/8	500
QQA40-2	600 kcmil	800 kcmil	650	800	2	2.4	1 5/8	2 1/8	1 1/8	2 5/16	7/16	5 15/16	1/2	3/8	500
QQA40-2N	600 kcmil	800 kcmil	650	800	2	2.5	1 5/8	3	1 3/4	2 5/16	9/16	6 13/16	5/8	3/8	500
QQA40-4	600 kcmil	800 kcmil	650	800	4	2.4	1 7/8	1 15/16	1	2 5/16	7/16	5 3/4	7/16	3/8	500
QQA40-4N	600 kcmil	800 kcmil	650	800	4	3.0	3	3 1/16	1 3/4	2 5/16	9/16	6 7/8	5/8	3/8	500
QQA44	850 kcmil	1000 kcmil	1000	1000	1	2.7	1 7/8	2	-	2 1/2	11/16	6 1/16	1	1/2	500
QQA44-2	850 kcmil	1000 kcmil	1000	1000	2	2.8	1 7/8	2 5/16	1 1/4	2 1/2	9/16	6 3/8	17/32	1/2	500
QQA44-2N	850 kcmil	1000 kcmil	1000	1000	2	2.9	1 7/8	3	1 3/4	2 1/2	9/16	7 1/16	5/8	1/2	500
QQA44-4	850 kcmil	1000 kcmil	1000	1000	4	2.8	1 1/8	2 3/16	1 1/8	2 1/2	7/16	6 1/4	1/2	1/2	500
QQA44-4N	850 kcmil	1000 kcmil	1000	1000	4	3.6	3	3 1/16	1 3/4	2 1/2	9/16	7 1/8	5/8	1/2	500
QQA46	1100 kcmil	1500 kcmil	1300	1300	1	4.6	2 1/8	2 1/8	-	2 7/8	13/16	6 7/8	1 1/16	9/16	600
QQA46-2	1100 kcmil	1500 kcmil	1300	1300	2	4.8	2 1/8	2 5/8	1 3/8	2 7/8	9/16	7 3/8	5/8	9/16	600
QQA46-2N	1100 kcmil	1500 kcmil	1300	1300	2	5.0	2 1/8	3	1 3/4	2 7/8	9/16	7 3/4	5/8	9/16	600
QQA46-4	1100 kcmil	1500 kcmil	1300	1300	4	4.8	2 1/2	2 5/8	1 3/8	2 7/8	9/16	7 3/8	9/16	1/2	600
QQA46-4N	1100 kcmil	1500 kcmil	1300	1300	4	5.3	3	3 1/8	1 3/4	2 7/8	9/16	7 7/8	5/8	1/2	600
QQA48	1600 kcmil	2000 kcmil	1600	2000	1	6.8	2 1/2	2 3/8	-	3 3/16	13/16	8	1 3/16	5/8	600
QQA48-2	1600 kcmil	2000 kcmil	1600	2000	2	7.0	2 1/2	2 3/4	1 1/2	3 3/16	9/16	8 3/8	5/8	5/8	600
QQA48-2N	1600 kcmil	2000 kcmil	1600	2000	2	7.1	2 1/2	3	1 3/4	3 3/16	9/16	8 5/8	5/8	5/8	600
QQA48-4	1600 kcmil	2000 kcmil	1600	2000	4	6.9	2 5/8	2 3/4	1 1/2	3 3/16	9/16	8 3/8	9/16	5/8	600
QQA48-4N	1600 kcmil	2000 kcmil	1600	2000	4	7.4	3	3 1/8	1 3/4	3 3/16	9/16	8 3/4	5/8	5/8	600

REV	DATE	DESCRIPTION	ECO	BY	CHK.
B	03/09/2018	NOTES# 5 ADDED	48643	BM	NJS



NOTES:

1. A CLAMP TYPE CONNECTOR WITH TWO CLAMPING ELEMENTS TO INSURE MAXIMUM SECURENESS AGAINST VIBRATION AND FLEXURE. CABLE STRANDS ARE CLAMPED TOGETHER AND FORCED INTO CONTACT WITH THE TERMINAL BODY. QIKLUG™ MAINTAIN FULL SALVAGE VALUE. THEY CAN BE REMOVED FROM SERVICE AS EASILY AS THEY WERE INSTALLED AND USED AGAIN AND AGAIN.

2 "N" INDICATES NEMA STANDARD STUD HOLES.

3. MATERIAL - CAST COPPER ALLOY.

4. FOR COPPER CONDUCTOR ONLY.

5. ADD "TN" SUFFIX TO CATALOG NUMBER FOR TIN PLATING

TO ORDER BURNDY PRODUCTS CALL		QIKLUG™	
UNITED STATES 1-800-346-4175 (LONDONDERRY, NH)		ITEM NO: QQA-- (SEE TABLE)	
CANADA: 1-800-361-6975 (QUEBEC) 1-800-387-6487 (ALL OTHER PROVINCES)		CAT. NO: QQA-- (SEE TABLE)	
FOR PRODUCT INFO: http://www.burndy.com		DRAWN BY: A BALA 4/17/2018	
		CHECKER: D. SPURRELL 7/25/2012	
		DSN APRVL: K. CASTONGUAY 4/17/2018	
		MFG APRVL: T. WAWRZYNIAK 7/25/2012	
		QA APRVL: B. POST 3/12/2018	
		MKT APRVL: M. BAILLY 4/17/2018	
		PROD FAM:	DRAWING NO
		PROJECT #: CM&R	SA005911-01
		DOCUMENT TYPE: SALES	REV
		REL LEVEL: Released	B
		SIZE	SHEET 1 OF 1
		B	B