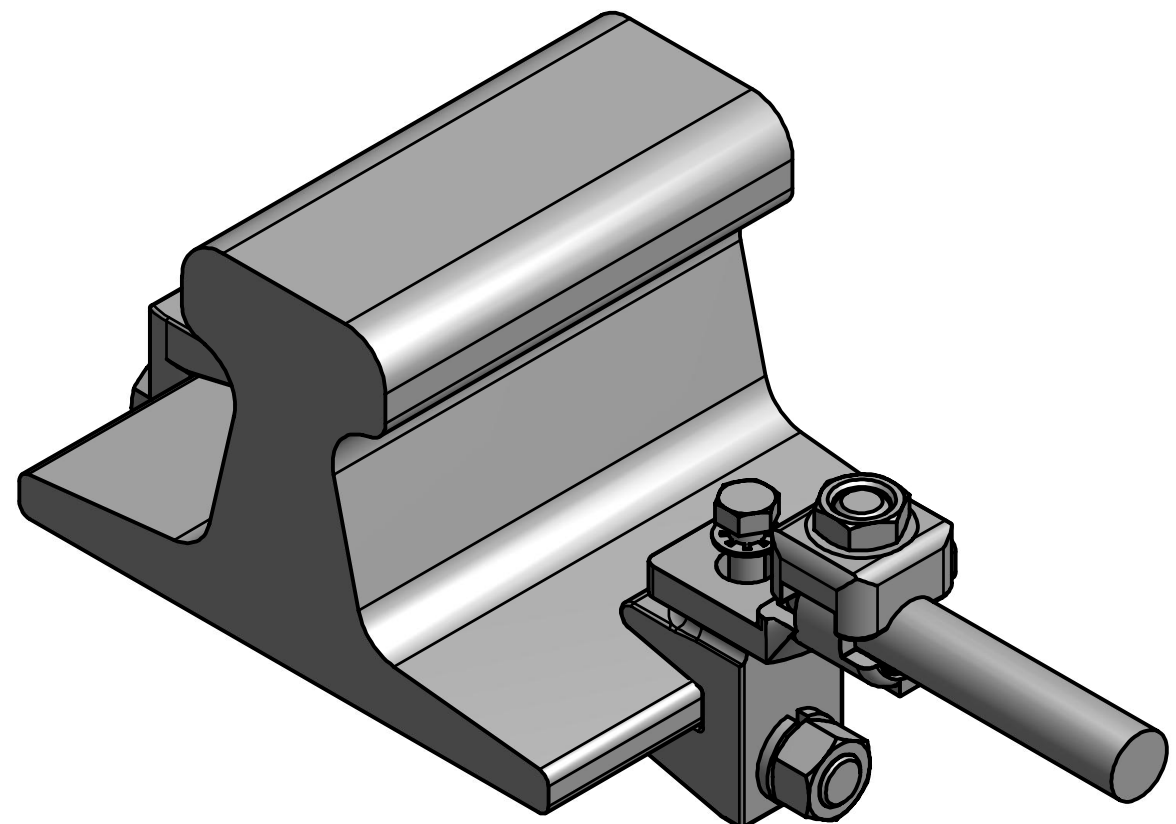
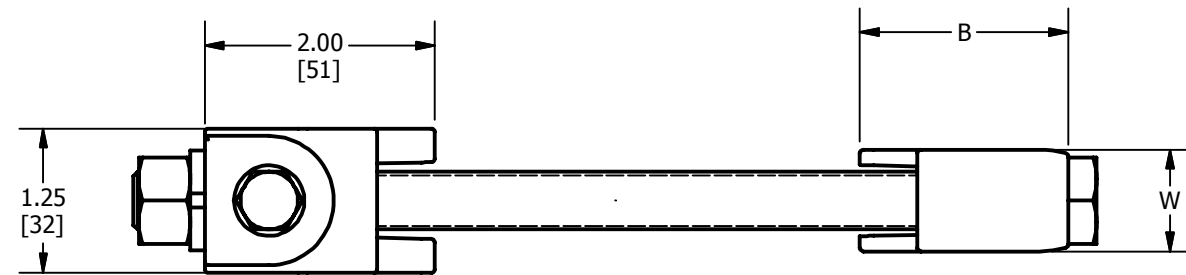
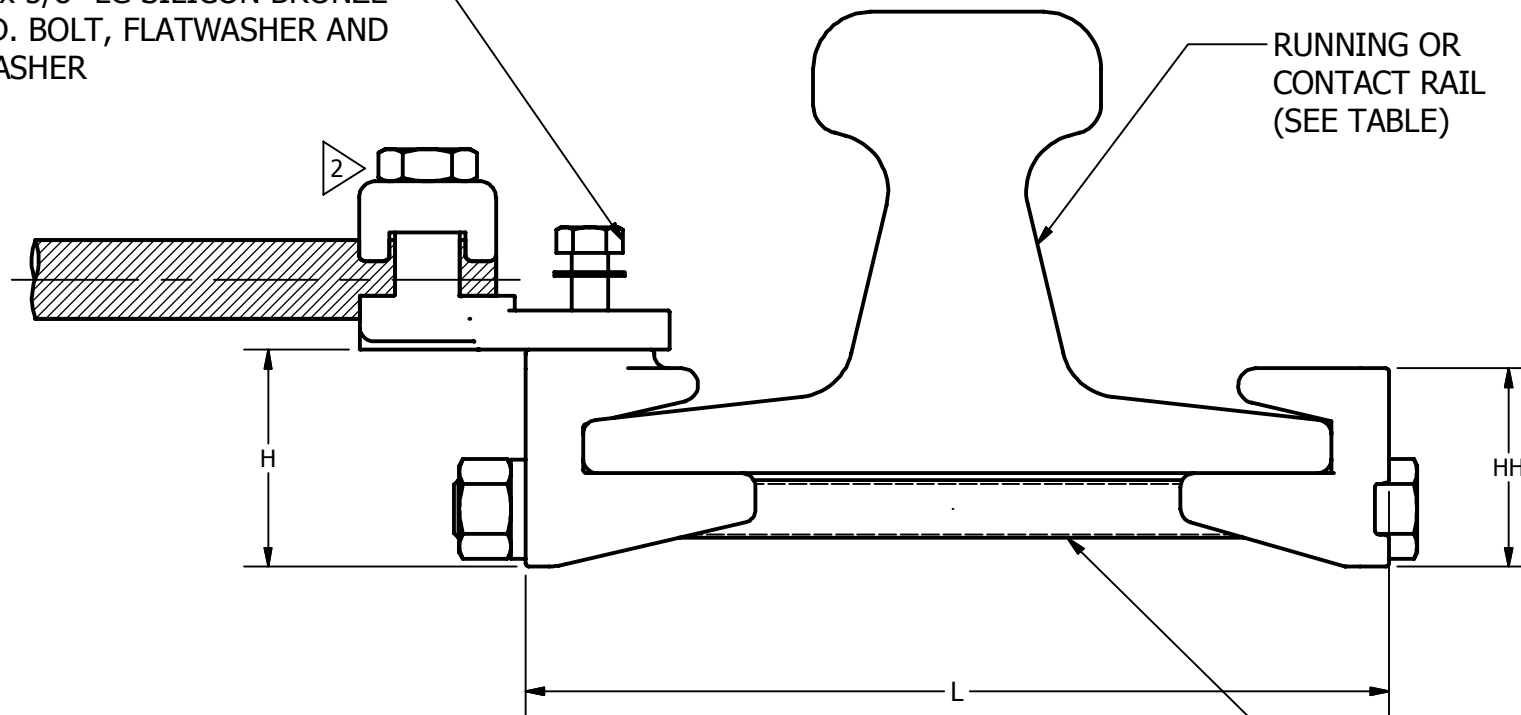


CATALOG NUMBER	ACCOMMODATES 2	B	H	HH	L	W
J278	100 LBS. A.R.A. RUNNING RAIL	1.81 [46]	1.88 [48]	1.72 [44]	7.50 [191]	.88 [22]
J279	75, 90 LBS. RUNNING RAIL	1.81 [46]	1.71 [43]	1.55 [39]	7.50 [191]	.88 [22]
J280	150 LBS. CONTACT RAIL	2.12 [54]	2.08 [53]	1.92 [49]	7.00 [178]	1.25 [32]
J278G1	100 LBS. A.R.A. RUNNING RAIL	1.81 [46]	1.88 [48]	1.72 [44]	8.00 [203]	.88 [22]

REV	DATE	DESCRIPTION	ECO	BY	C'H'K.
A	04/04/2013	DRAWING UPDATED AS PER MARKUP	30858	GP	MB



5/16-18 x 5/8" LG SILICON BRONZE
HEX. HD. BOLT, FLATWASHER AND
LOCKWASHER



NOTES:

1. MATERIAL: CAST COPPER ALLOY.
2. ACCOMMODATES RAIL TO CABLE IN BURNDY QA-B TERMINAL. WEIGHT OF RAIL SPECIFIED PER ONE YARD.
3. DIMENSIONS IN BRACKETS [] ARE IN MILLIMETERS ROUNDED OFF TO THE NEAREST MILLIMETER, UNLESS OTHERWISE SPECIFIED AND ARE FOR REFERENCE ONLY.

1/2"-13 SILICON BRONZE HEX. HD.
BOLT, HEX. NUT AND SPLIT LOCKWASHER

TO ORDER BURNDY® PRODUCTS CALL		RAIL CONNECTOR	
UNITED STATES 1-800-346-4175 (LONDONDERRY, NH)		ITEM NO: 50015860, 595013, 595076, 595280	
CANADA: 1-800-361-6975 (QUEBEC) 1-800-387-6487 (ALL OTHER PROVINCES)		CAT. NO: J278G1, J278, J279, J280	
FOR PRODUCT INFO: http://www.burndy.com		DRAWN BY: MJM 03/19/1960	
		CHECKER: ERD 03/19/1960	
		DSN APRVL: WGO 03/23/1960	
		MFG APRVL: N/A	
		QA APRVL: N/A	
		MKT APRVL: N/A	
		PROD FAM: --	
		DRAWING NO	
		SA045534-01	
		REV	
		A	
		SHEET 1 OF 1	