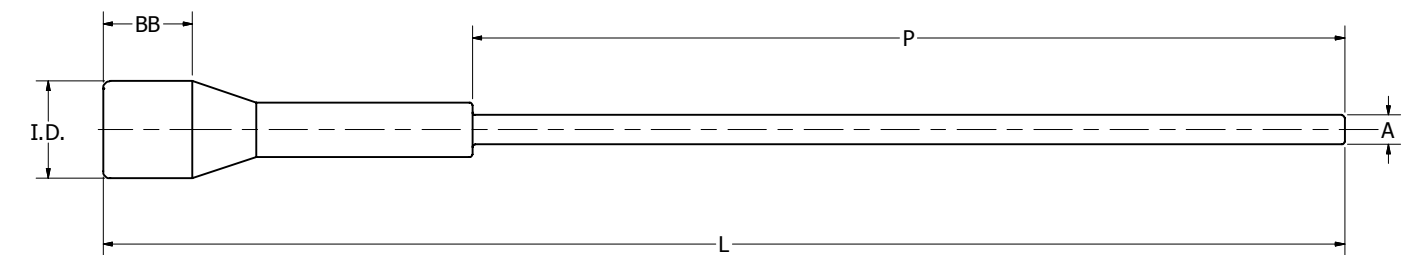


CATALOG NUMBER	CONDUCTOR	BB ± .06	SHROUD INSIDE DIA. ± .01	A DIA ± .03	L ± .150	P ± .08	BURNDY® INSTALLATION TOOLING (# CRIMPS)					
							MECHANICAL		HYDRAULIC			
							MD7, MD6	Y35, Y750 Y39	Y46	Y45	Y48B	Y60BHU
YE4CLH113	4 STR	0.63 [16]	0.57 [14]	4 SOL (.20)	8.63 [219]	6 [152]	W161 (2) OR W162 (2)	U4CRT (2)	U4CRT (2)	U4CRT (2)	--	--
YE4CLH114		0.63 [16]	0.84 [21]				W161 (2) OR W162 (2)	U4CRT (2)	U4CRT (2)	U4CRT (2)	--	--
YE2CLH128	2 STR	0.75 [19]	0.58 [15]	2 SOL (.26)	9.00 [229]	6 [152]	W162 (4)	U2CRT (2)	U2CRT (2)	U2CRT (2)	--	--
YE2CLH129		0.75 [19]	.91 [23]				W162 (4)	U2CRT (2)	U2CRT (2)	U2CRT (2)	--	--
YE25LH96	1/0 STR	1 [25]	.69 [18]	1/0 SOL (.33)	11.38 [289]	8 [203]	W163 (4)	U25RT (2)	U25RT (2)	U25RT (2)	--	--
YE25LH97		1 [25]	.98 [25]				W163 (4)	U25RT (2)	U25RT (2)	U25RT (2)	--	--
YE26LH88	2/0 STR	1 [25]	.73 [19]	2/0 SOL (.37)	11.38 [289]	8 [203]	W241(2)	U26RT (2)	U26RT (2)	U26RT (2)	--	--
YE26LH89		1 [25]	1.04 [26]				W241(2)	U26RT (2)	U26RT (2)	U26RT (2)	--	--
YE27LH90	3/0 STR	1 [25]	.84 [21]	3/0 SOL (.41)	11.38 [289]	8 [203]	W243 (2)	U27RT (2)	U26RT (2)	U26RT (2)	--	--
YE27LH91		1 [25]	1.06 [27]				W243 (2)	U27RT (2)	U26RT (2)	U26RT (2)	--	--
YE28LH127	4/0 STR	1 [25]	.86 [22]	4/0 SOL (.46)	11.63 [289]	8 [203]	W-BG OR W243 (2)	U28RT (2)	U28RT (2)	U28RT (2)	--	--
YE28LH128		1 [25]	1.24 [31]				W-BG OR W243 (2)	U28RT (2)	U28RT (2)	U28RT (2)	--	--
YE29LH82	250	1 [25]	.88 [22]	4/0 SOL (.46)	11.63 [289]	8 [203]	W166 (4)	U29RT (2)	U29RT (2)	U29RT (2)	--	--
YE29LH83		1 [25]	1.25 [32]				W166 (4)	U29RT (2)	U29RT (2)	U29RT (2)	--	--
YE30LH85	300	1.25 [32]	.92 [23]	4/0 SOL (.46)	12.00 [305]	8 [203]	--	U30RT (2)	U30RT (2)	U30RT (2)	C30R (1)	L30RT (1)
YE30LH86		1.25 [32]	1.32 [34]				--	U30RT (2)	U30RT (2)	U30RT (2)	C30R (1)	L30RT (1)
YE31LH96	350	1.25 [32]	1.30 [26]	4/0 SOL (.46)	12.25 [311]	8 [203]	W-O (5)	U31RT (2)	U31RT (2)	U31RT (2)	C31R (1)	L31RT (1)
YE31LH97		1.25 [32]	1.40 [36]				W-O (5)	U31RT (2)	U31RT (2)	U31RT (2)	C31R (1)	L31RT (1)
YE34LH119	500	1.5 [38]	1.14 [29]	4/0 SOL (.46)	13.25 [337]	8 [203]	--	U34RT (2)	U34RT (2)	U34RT (2)	C34R (1)	L34RT (1)
YE34LH120		1.5 [38]	1.88 [48]				--	U34RT (2)	U34RT (2)	U34RT (2)	C34R (1)	L34RT (1)
YE39LH120	750	1 [25]	1.94 [49]	4/0 SOL (.46)	13.00 [330]	8 [203]	--	U39RT(2)	U39RT(2)	U39RT(2)	C39R(1)	L39RT(1)

REV	DATE	DESCRIPTION	ECO	BY	CHK.
C	11/11/2015	FOCUS REQUEST FPN1511023	42128	AV	MB



**NOTES:**

- DIMENSIONS IN BRACKETS [ ] ARE IN MILLIMETERS ROUNDED OFF TO THE NEAREST MILLIMETER, UNLESS OTHERWISE SPECIFIED AND ARE FOR REFERENCE ONLY.
- CATALOG # PT-6515 ADAPTOR IS REQUIRED TO USE "U" DIES IN Y45 SERIES TOOLS.
- CATALOG # PUADP-1 ADAPTOR IS REQUIRED TO USE "U" DIES IN Y46 SERIES TOOLS.

- OIL AND WATER - TIGHT TERMINAL WITH SHROUDED, TIN - PLATED, COPPER BARREL AND BRAZED PLUG. RECOMMENDED FOR TERMINATING INSULATED COPPER CONDUCTOR AT CUTOUT, TRANSFORMER AND ARRESTOR, OR FOR JOINING INSULATED COPPER RISER TO OVER HEAD CONDUCTOR. SHROUD PREVENTS SEEPAGE OF WATER OR MOISTURE INTO CONDUCTOR STRANDS AND MINIMIZES TAPING. TO OBTAIN A TIGHT FIT ON SOME INSULATIONS IN THE SHROUD IT MAY BE NECESSARY TO EITHER "PENCIL" THE INSULATION DOWN, OR BUILD IT UP WITH TAPE.

TO ORDER BURNDY PRODUCTS CALL		HYSEALPLUG (COPPER)	
UNITED STATES 1-800-346-4175 (LONDONDERRY, NH)		ITEM NO: SEE TABLE	
CANADA: 1-800-361-6975 (QUEBEC) 1-800-387-6487 (ALL OTHER PROVINCES)		CAT. NO: YE-LH (TABLE)	
FOR PRODUCT INFO: <a href="http://www.burndy.com">http://www.burndy.com</a>		DRAWN BY: M.A.P 1/23/1964	
		CHECKER: A.K.K 1/23/1964	
		DSN APRVL: ---	
		MFG APRVL: ---	
		QA APRVL: ---	
		MKT APRVL: ---	
		PROD FAM: ---	
		DRAWING NO	
		SA055640-01	
		REV	
		C	
		SHEET 1 OF 1	