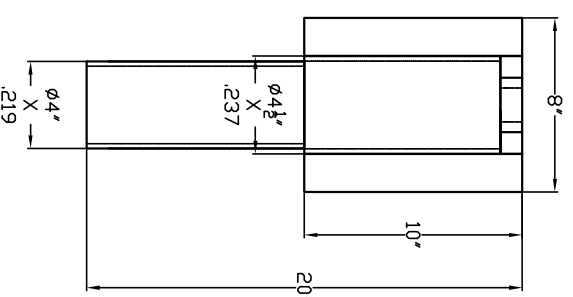
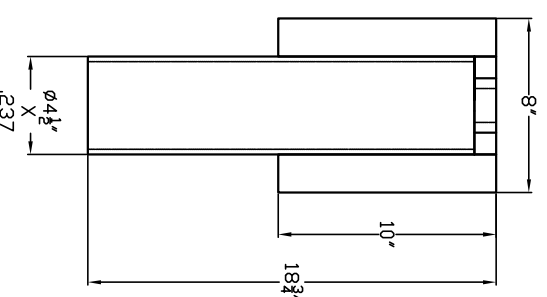
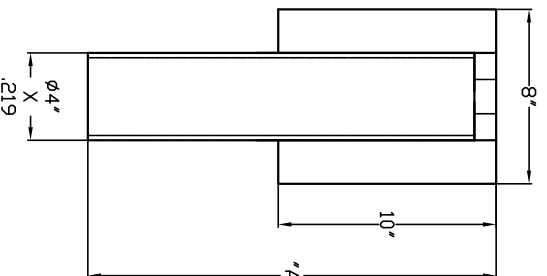
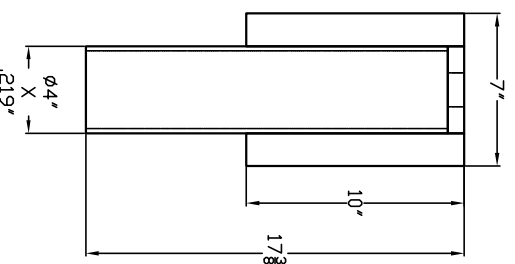
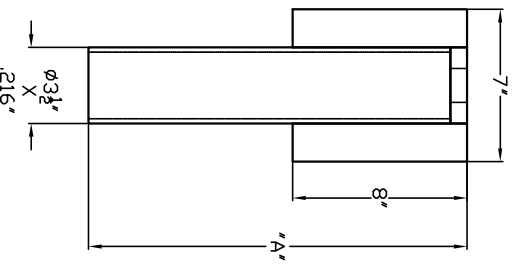
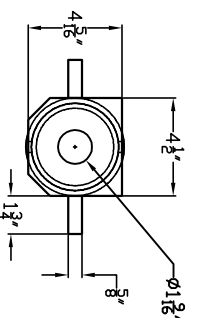
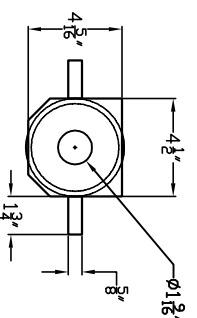
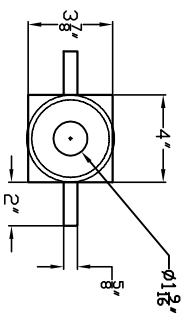
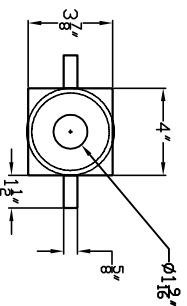
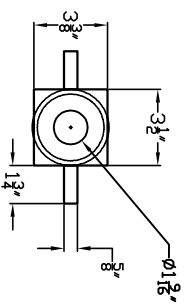


TOP PIER PLATFORMS



PART#	DESCRIPTION	%A
PSA1035	AP-2-TPP-2875(F)	17 3/4%
PSA1056	AP-2-TPP-2875(G)	17 3/4%
PSA7400	AP-2-TPP-2875(M/G)	42 1/2%

PART#	DESCRIPTION	%A
PSA4839	AP-2-TPP-2875(M/F)	17 3/4%
PSA4840	AP-2-TPP-2875(M/G)	17 3/4%

PART#	DESCRIPTION	%A
PSA1002	AP-2-TPP-3500(F)	18 3/4%
PSA1053	AP-2-TPP-3500(G)	18 3/4%
PSA7401	AP-2-TPP-3500(M/G)	42 1/2%

PART#	DESCRIPTION	%A
PSA1095	AP-2-TPP-3500(M/F)	18 3/4%
PSA1105	AP-2-TPP-3500(M/G)	18 3/4%

PART#	DESCRIPTION	%A
PSA2210	AP-2-TPP-4500(F)	18 3/4%
PSA2980	AP-2-TPP-4500(G)	18 3/4%

-NOTES-

1. TOP PIER PLATFORM FINISH AVAILABLE IN PLAIN (P) OR HOT DIP GALVANIZED (G) PER ASTM A153-(LATEST REVISION).
2. MATERIAL SPECIFICATIONS:
PIPE MATERIAL PER ASTM A513/1 OR ASTM A500 GRADE B OR A53 TYPE A.
PLATE MATERIAL PER ASTM A36.
3. ALL WELDING TO BE DONE BY WELDERS CERTIFIED UNDER SECTION 5 OF THE AWS CODE D1.1.
4. MANUFACTURER TO HAVE IN EFFECT INDUSTRY RECOGNIZED WRITTEN QUALITY CONTROL FOR ALL MATERIALS AND MANUFACTURING PROCESSES.

ATLAS [®]		HUBBELL POWER SYSTEMS	
TOP PIER PLATFORMS			
DO NOT SCALE THIS DRAWING	TITLE	DWG NO.	CAT / PART / ASSY NO.
A	SA1002	SEE DWG	REV A
DRN BY SMS	DATE 3/9/07	SHEET 1 OF 1	

CONFERENTIAL: THIS DRAWING AND ITS CONTENTS ARE THE PROPERTY OF HUBBELL POWER SYSTEMS, INC. NO PUBLICATION, DISTRIBUTION OR COPIES MAY BE MADE WITHOUT THE PRIOR WRITTEN CONSENT OF HUBBELL POWER SYSTEMS UNPUBLISHED. ALL RIGHTS RESERVED UNDER THE COPYRIGHT LAWS.