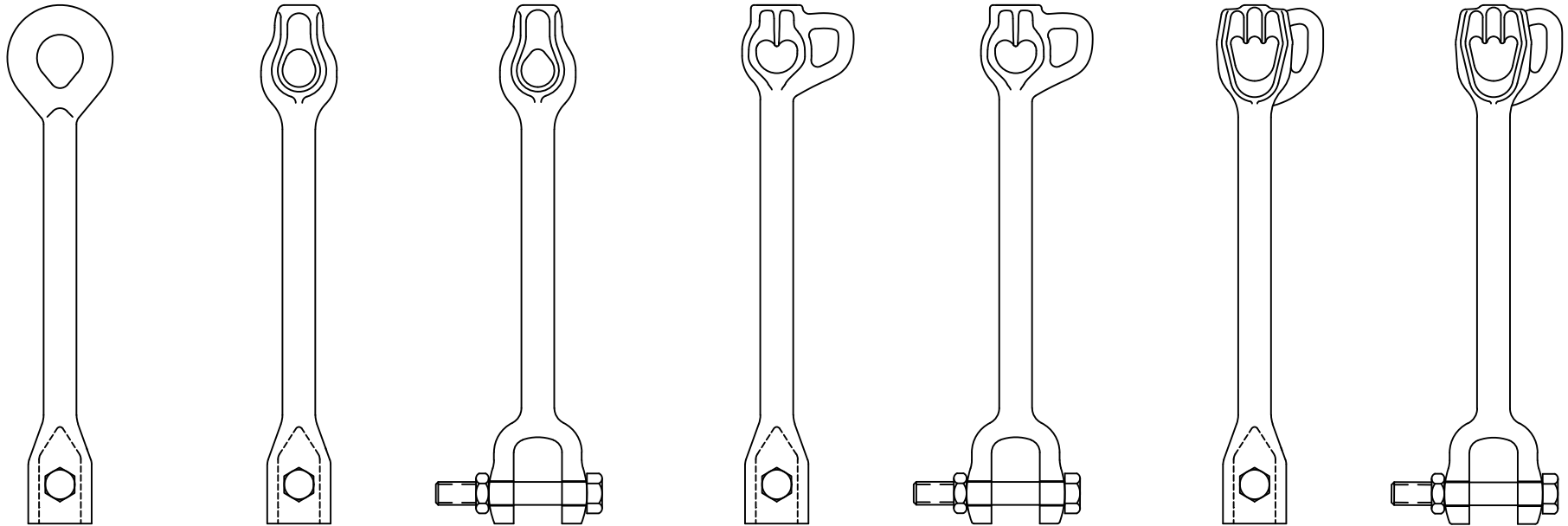


-NOTES-

1. HOT DIP GALVANIZE PER ASTM A153 (LATEST REVISION).
2. BOLT PER ASTM A325 TYPE 1 (LATEST REVISION).
3. BOLT PER ASTM A193 GRADE B7 (LATEST REVISION).
4. MAXIMUM DIAMETER GUY STRANDS ARE TWICE R AND R1.
5. PULLING EYE FITS CHANCE STANDARD HOIST HOOKS 2 TONS AND LESS. PULLING EYE RATED AT AN ULTIMATE LOAD OF 12,000 LB.
6. ALL FORGED GUY ADAPTERS ARE 18" END TO END.
7. ADD "Y" TO END OF CATALOG NUMBERS INDICATED BY ASTERISK FOR YELLOW PAINT OVER GALVANIZING.
8. ADD USA SUFFIX TO CATALOG NUMBER FOR BUY AMERICA ITEMS. PURCHASERS OF BUY AMERICA ITEMS WILL BE PROVIDED A DATED CERTIFICATE OF COMPLIANCE TO SPECIFIC BUY AMERICA PROVISIONS IF REQUESTED AT THE TIME OF ORDER. CONTACT HUBBELL POWER SYSTEMS CUSTOMER SERVICE FOR DETAILS.

|              |              |                              |                               |   |                               |  |
|--------------|--------------|------------------------------|-------------------------------|---|-------------------------------|--|
| (1) C1100041 | (1) C1020023 | (1) T1100311<br>(1) T1100312 | (1) C1020024A<br>(2) C1020024 | (1) T1100964A<br>(2) T1100964<br>(2) T1101229 | (1) C1020025A<br>(2) C1020025 | (1) T1100465A<br>(1) T1100629A<br>(2) T1100465<br>(2) T1100629 |
|--------------|--------------|------------------------------|-------------------------------|---|-------------------------------|--|



| CATALOG NUMBER (NOTE 7) |                    |            |         |
|-------------------------|--------------------|------------|---------|
| (1) W/O PULLING EYE     | (2) W/ PULLING EYE | ADAPTER    | COUPLER |
| C1100041                | N/A                | DVALEYE    | SS5/150 |
| C1020023*               | N/A                | THIMBLEYE® | SS5/150 |
| T1100311*               | N/A                | THIMBLEYE® | SS175   |
| T1100312*               | N/A                | THIMBLEYE® | SS200   |
| C1020024A               | C1020024*          | TWINEYE®   | SS5/150 |
| C1020025A               | C1020025*          | TRIPLEYE®  | SS5/150 |
| T1100964A               | T1100964*          | TWINEYE®   | SS175   |
| T1100465A               | T1100465*          | TRIPLEYE®  | SS175   |
| N/A                     | T1101229           | TWINEYE®   | SS200   |
| T1100629A               | T1100629*          | TRIPLEYE®  | SS200   |

|  |   |
|--|---|
| <b>CHANCE</b><br>TOLERANCE CHART   | <b>HUBBELL® POWER SYSTEMS</b>           |
| CONFIDENTIAL: THIS DRAWING AND ITS CONTENTS ARE CONFIDENTIAL AND THE EXCLUSIVE PROPERTY OF HUBBELL POWER SYSTEMS. NO PUBLICATION, DISTRIBUTION OR COPIES MAY BE MADE WITHOUT THE WRITTEN CONSENT OF HUBBELL POWER SYSTEMS. HUBBELL POWER SYSTEMS UNPUBLISHED ALL RIGHTS RESERVED UNDER THE COPYRIGHT LAWS. |   |
| <b>TITLE</b><br>FORGED GUY ADAPTERS  |   |
| SIZE DWG NO.<br>C SA1020024  | CAT / PART / ASSY NO.<br>SEE TABLE      |
| DO NOT SCALE THIS DRAWING  | DRN BY TMK    DATE 11/2/12    SHEET 1/2 |

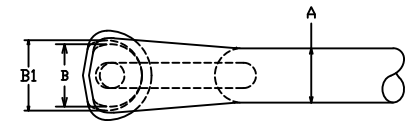
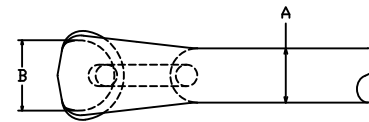
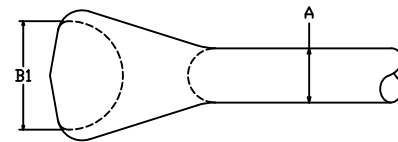
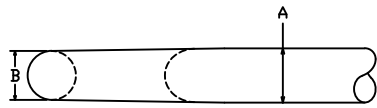
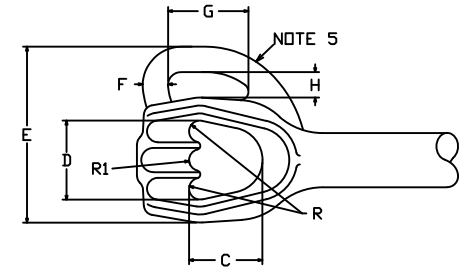
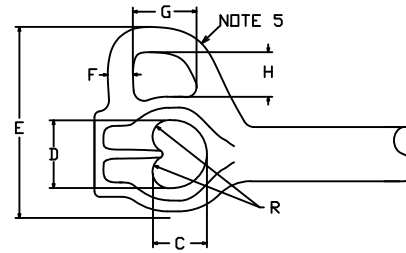
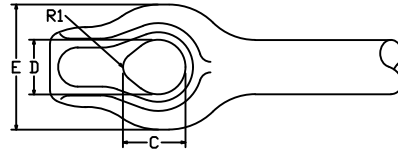
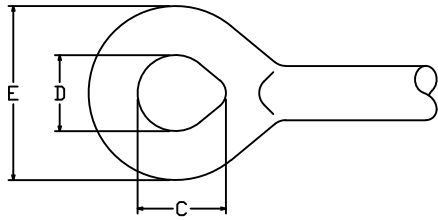
# ADAPTER

DVALEYE

THIMBLEYE®

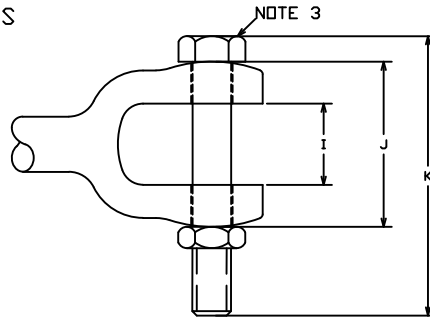
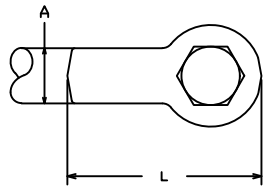
TWINEYE®

TRIPLEYE®

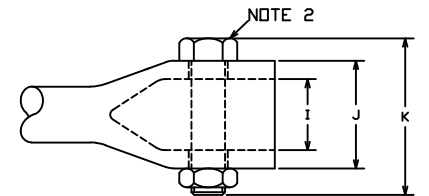
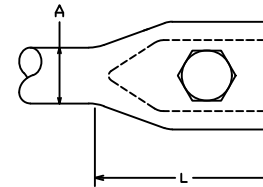


# COUPLER

CLEVIS



SOCKET



| DIM. | ADAPTER             |            |          |                    |          |           |
|------|---------------------|------------|----------|--------------------|----------|-----------|
|      | (1) W/O PULLING EYE |            |          | (2) W/ PULLING EYE |          |           |
|      | DVALEYE             | THIMBLEYE® | TWINEYE® | TRIPLEYE®          | TWINEYE® | TRIPLEYE® |
| A    | 1.25                | 1.25       | 1.25     | 1.25               | 1.25     | 1.25      |
| B    | 1.06                | N/A        | 1.62     | 1.44               | 1.62     | 1.44      |
| B1   | N/A                 | 2.50       | N/A      | 1.62               | N/A      | 1.62      |
| C    | 2.25                | 1.44       | 1.24     | 1.69               | 1.24     | 1.69      |
| D    | 1.75                | 1.25       | 1.56     | 1.82               | 1.56     | 1.82      |
| E    | 3.90                | 2.88       | 2.12     | 2.30               | 4.16     | 4.05      |
| F    | N/A                 | N/A        | N/A      | N/A                | 0.50     | 0.58      |
| G    | N/A                 | N/A        | N/A      | N/A                | 1.48     | 1.77      |
| H    | N/A                 | N/A        | N/A      | N/A                | 1.00     | 1.00      |
| R    | N/A                 | N/A        | 0.38     | 0.25               | 0.38     | 0.25      |
| R1   | N/A                 | 0.53       | N/A      | 0.28               | N/A      | 0.28      |

| DIM. | COUPLER |        |       |
|------|---------|--------|-------|
|      | SOCKET  | CLEVIS |       |
|      | SS5/150 | SS175  | SS200 |
| A    | 1.25    | 1.25   | 1.25  |
| I    | 1.59    | 1.84   | 2.17  |
| J    | 2.41    | 3.74   | 3.92  |
| K    | 3.5     | 6.33   | 6.33  |
| L    | 4.0     | 4.39   | 4.34  |

CHANCE  
TOLERANCE CHART



HUBBELL® POWER SYSTEMS

CONFIDENTIAL: THIS DRAWING AND ITS CONTENTS ARE CONFIDENTIAL AND THE EXCLUSIVE PROPERTY OF HUBBELL POWER SYSTEMS. NO PUBLICATION, DISTRIBUTION OR COPIES MAY BE MADE WITHOUT THE WRITTEN CONSENT OF HUBBELL POWER SYSTEMS. HUBBELL POWER SYSTEMS UNPUBLISHED ALL RIGHTS RESERVED UNDER THE COPYRIGHT LAWS.

|                           |            |                       |           |
|---------------------------|------------|-----------------------|-----------|
| TITLE                     |            |                       |           |
| FORGED GUY ADAPTERS       |            |                       |           |
| SIZE                      | DWG NO.    | CAT / PART / ASSY NO. | REV       |
| C                         | SA1020024  | SEE TABLE             | G         |
| DO NOT SCALE THIS DRAWING | DRN BY TMK | DATE 11/2/12          | SHEET 2/2 |