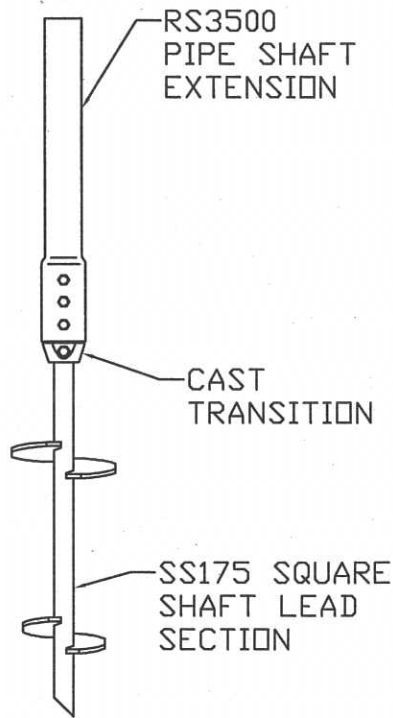
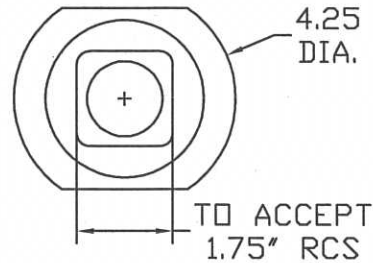
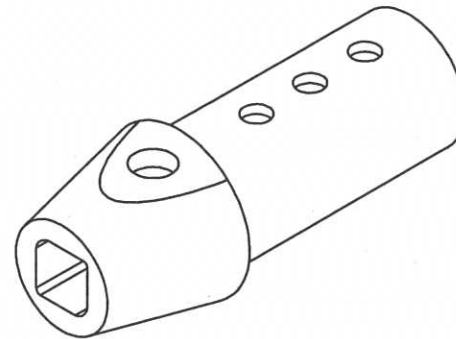
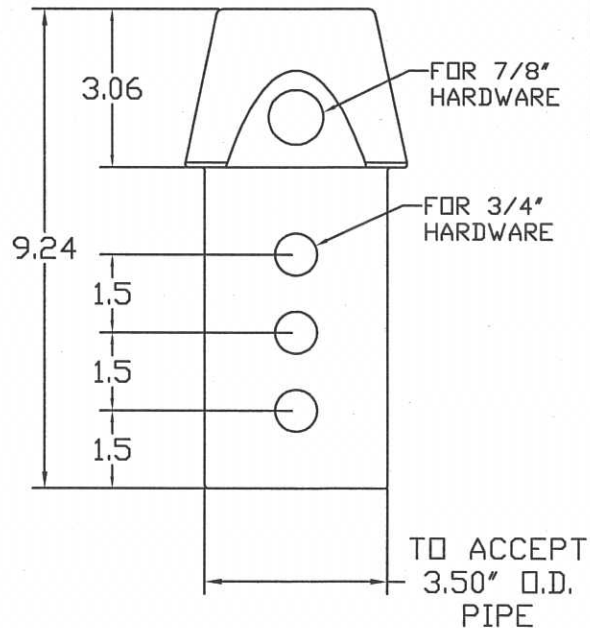


TORQUE RATING: 10,500 FT-LBS
TENSION RATING: 100 KIP



TYPICAL PIER ASSEMBLY



PILE LENGTH (FT)	ULTIMATE CAPACITY TENSION/COMPRESSION			
	SAND		CLAY	
	K _t	CAPACITY (KIP)	K _t	CAPACITY (KIP)
< 30'-0	9.5	104.5	9	99
≥ 30'-0	9	99	8.5	93.5

-NOTES-

1. MATERIAL: CAST DUCTILE IRON PER ASTM A536 65-45-12.
2. FINISH: HOT DIP GALVANIZED PER ASTM A153.
3. HARDWARE: 7/8" HEX HEAD BOLT PER ASTM A193 GRADE B7.

CATALOG NUMBER:
C1071515

CHANCE	HUBBELL POWER SYSTEMS			
<small>CONFIDENTIAL: THIS DRAWING AND ITS CONTENTS ARE CONFIDENTIAL AND THE EXCLUSIVE PROPERTY OF HUBBELL POWER SYSTEMS. NO PUBLICATION, DISTRIBUTION OR COPIES MAY BE MADE WITHOUT THE WRITTEN CONSENT OF HUBBELL POWER SYSTEMS. HUBBELL POWER SYSTEMS UNPUBLISHED ALL RIGHTS RESERVED UNDER THE COPYRIGHT LAWS.</small>	TITLE TRANSITION, CAST 1.75" RCS TO 3.50" PIPE			REV ---
	SIZE B	DWG NO. SA1071515		
DO NOT SCALE THIS DRAWING	DRN BY TLW	DATE 5/16/11	SHEET 1 OF 1	

INDICATES A
CRITICAL FEATURE