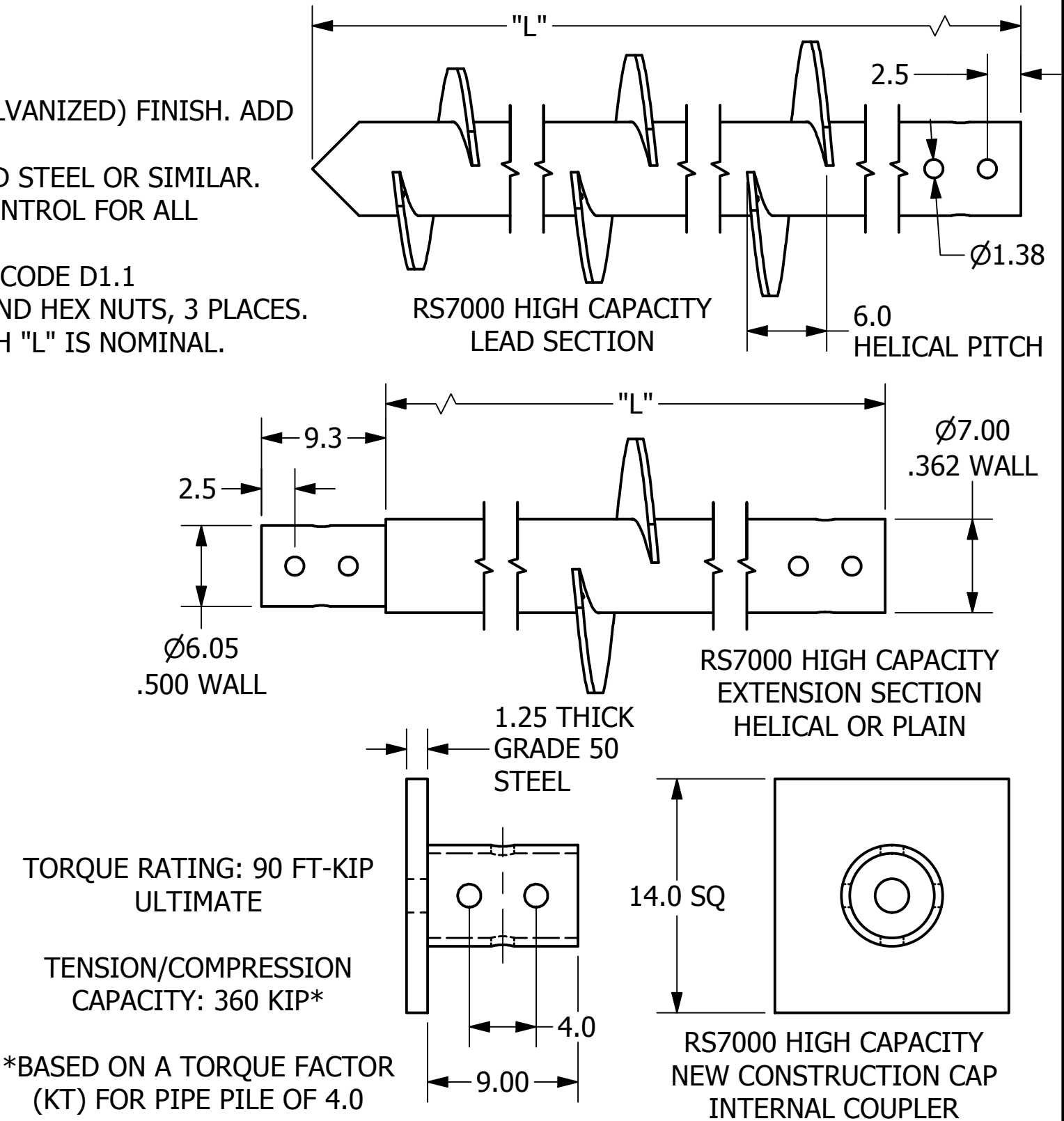


RS7000.362 HIGH CAPACITY HELICAL PILES

--NOTES--


- 1. FINISH: HOT DIP GALVANIZED PER ASTM A123. ALSO AVAILABLE IN BLACK (NON-GALVANIZED) FINISH. ADD "NG" TO THE OF THE CATALOG NUMBER FOR NON-GALVANIZED PRODUCT.
- 2. MATERIAL: HIGH STRENGTH STEEL. BOLT/STUD HARDWARE IS ASTM A354 GRADE BD STEEL OR SIMILAR.
- 3. MANUFACTURER TO HAVE IN EFFECT INDUSTRY RECOGNIZED WRITTEN QUALITY CONTROL FOR ALL MATERIALS AND MANUFACTURING PROCESSES.
- 4. ALL WELDING TO BE DONE BY CERTIFIED WELDERS UNDER SECTION 4 OF THE AWS CODE D1.1
- 5. HARDWARE IS PROVIDED WITH EXTENSIONS AND CAPS- Ø1-1/4, THREADED STUD AND HEX NUTS, 3 PLACES.
- 6. HELIX SPACING IN LEADS IS EQUAL TO THREE DIAMETERS OF LOWER HELIX. LENGTH "L" IS NOMINAL.

CATALOG NUMBER	DESCRIPTION	"L" LENGTH
C1073124	EXTENSION, RS7000.362, 3-1/2FT SC, HCP	42
C1073125	EXTENSION, RS7000.362, 5FT SC, HCP	60
C1073126	EXTENSION, RS7000.362, 7FT SC, HCP	84
C1073118	EXTENSION, RS7000.362, 10FT SC, HCP	120
C1073127	EXTENSION, RS7000.362, 15FT SC, HCP	180
C1073138	EXTENSION, RS7000.362, 21FT SC, HCP	252
C1073177	EXTENSION, RS7000.362, 20 X 5FT 6SC, HCP	60
C1073178	EXTENSION, RS7000.362, 22 X 7FT 6SC, HCP	84
C1073179	EXTENSION, RS7000.362, 24 X 7FT 6SC, HCP	84
C1073180	EXTENSION, RS7000.362, 26 X 7FT 6SC, HCP	84
C1073128	LEAD, RS7000.362, 16 X 10FT 6SC, HCP	120
C1073129	LEAD, RS7000.362, 18 X 10FT 6SC, HCP	120
C1073130	LEAD, RS7000.362, 24 X 10FT 6SC, HCP	120
C1073117	LEAD, RS7000.362, 16/16 X 10FT 6SC, HCP	120
C1073131	LEAD, RS7000.362, 18/18 X 10FT 6SC, HCP	120
C1073132	LEAD, RS7000.362, 24/24 X 10FT 6SC, HCP	120
C1073133	LEAD, RS7000.362, 16/18 X 10FT 6SC, HCP	120
C1073181	LEAD, RS7000.362, 18/20 X 10FT 6SC, HCP	120
C1073182	LEAD, RS7000.362, 16/18/20 X 10FT 6SC, HCP	120
C1073119	CAP, NEW CONSTRUCTION, RS7000.362 SC, HCP, TENS/COMP	N/A



CHANCE®

CONFIDENTIAL: THIS DRAWING AND ITS CONTENTS ARE CONFIDENTIAL AND THE EXCLUSIVE PROPERTY OF HUBBELL POWER SYSTEMS. NO PUBLICATION, DISTRIBUTION, OR COPIES MAY BE MADE WITHOUT THE WRITTEN CONSENT OF HUBBELL POWER SYSTEMS. HUBBELL POWER SYSTEMS UNPUBLISHED ALL RIGHTS RESERVED UNDER THE COPYRIGHT LAWS.



HUBBELL POWER SYSTEMS, INC.

TITLE

RS7000.362 HCP
LEADS, EXTENSIONS, AND CAPS

SIZE
B

CAT / PART / ASSY NO.
SEE TABLE

DWG NO.
SA1073124

REV
A

DO NOT SCALE
THIS DRAWING

DRN BY APB

DATE 2/24/20

SHEET 1 OF 1