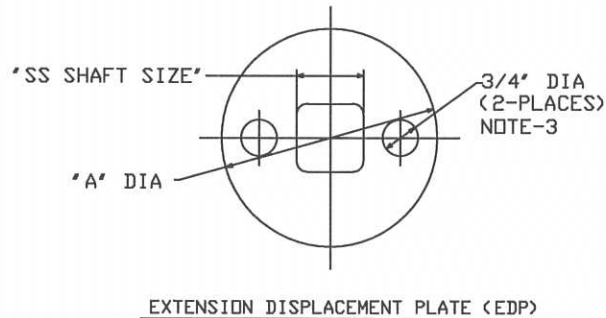
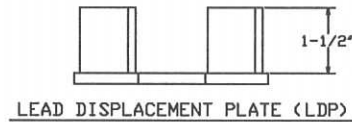
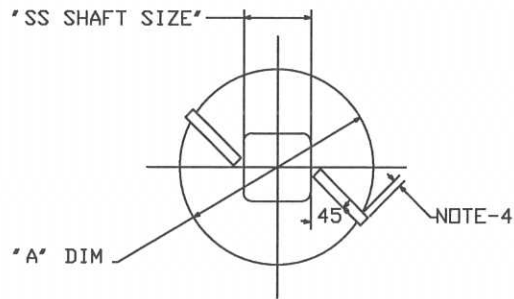


DISPLACEMENT PLATES FOR UN-CASED GROUT COLUMNS



==NOTES==

1. MAT'L: 1/4" THICK STEEL.
2. 3/4" DIA. HOLES LOCATED ON CENTER LINE $\pm 1/8"$.
3. PADDLES OVERHANG OUTSIDE PERIMETER OF PLATE.

LEAD DISPLACEMENT PLATE

CAT. NO.	"A" DIM	SS SHAFT SIZE
T1100915	5'	1-1/2"
C1100916	5'	1-3/4"

EXTENSION DISPLACEMENT PLATE

CAT. NO.	DIM. "A"	SS SHAFT SIZE
T1100917	5'	1-1/2"
C1100918	5'	1-3/4"

HELICAL PULLDOWN[®] MICROPILES

CHANCE



HUBBELL POWER SYSTEMS

TITLE

DISPLACEMENT
PLATES

CONFIDENTIAL: THIS DRAWING AND ITS CONTENTS ARE CONFIDENTIAL AND THE EXCLUSIVE PROPERTY OF HUBBELL POWER SYSTEMS. NO PUBLICATION, DISTRIBUTION OR COPIES MAY BE MADE WITHOUT THE WRITTEN CONSENT OF HUBBELL POWER SYSTEMS. HUBBELL POWER SYSTEMS UNPUBLISHED ALL RIGHTS RESERVED UNDER THE COPYRIGHT LAWS.

SIZE DWG NO.

SB SA1100915

CAT / PART / ASSY NO.

SEE CHART

REV

DO NOT SCALE THIS DRAWING

DRN BY TLW

DATE 5/24/11

SHEET 1/1