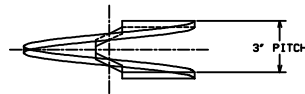
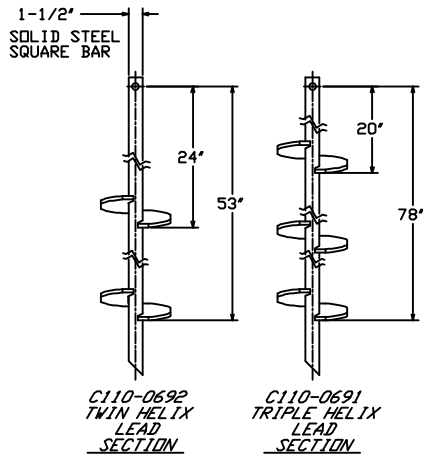


SOIL SCREW™ RETENTION WALL SYSTEM

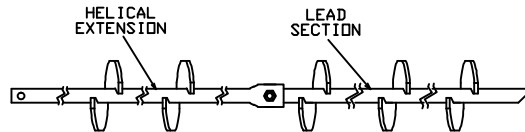
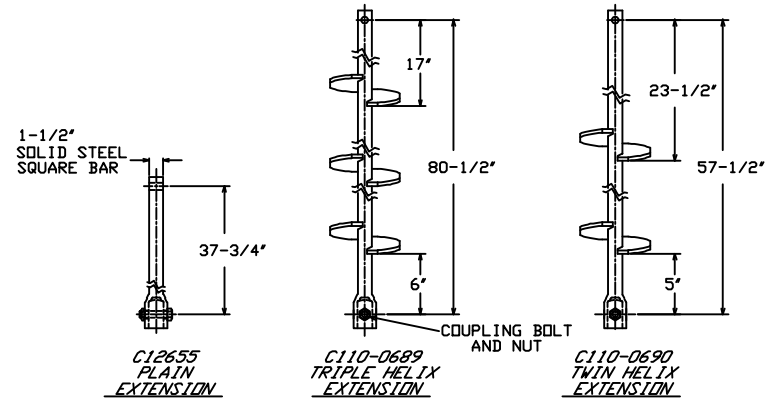
ALLOWABLE TORQUE CAPACITY - 5,500 FT-LBS.
 ULTIMATE TENSION STRENGTH OF ANCHORS - 70,000 LBS.

-NOTES-

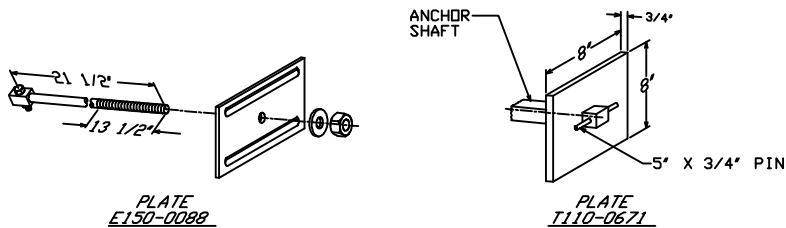
- HOT DIP GALVANIZED PER ASTM A153-(LATEST REV.)
- LEAD AND EXTENSION SECTION LENGTHS AND HELIX SPACINGS ARE NOMINAL, EXPECT SOME VARIANCE.
- MANUFACTURER TO HAVE IN EFFECT INDUSTRY RECOGNIZED WRITTEN QUALITY CONTROL FOR ALL MATERIALS AND MANUFACTURING PROCESSES.
- ALL WELDING TO BE DONE BY WELDERS CERTIFIED UNDER SECTION 5 OF THE AWS CODE D1.1.



HELIX MUST BE FORMED BY MATCHING METAL DIE
 (SIDE VIEW OF TRUE HELICAL FORM)



TYPICAL ANCHOR ASSEMBLY



CHANCE®		HUBBELL® POWER SYSTEMS POWER SYSTEMS, INC.	
TITLE SOIL SCREW RETENTION WALL SYSTEM			
CONFIDENTIAL: THIS DRAWING AND ITS CONTENTS ARE CONFIDENTIAL AND THE EXCLUSIVE PROPERTY OF HUBBELL POWER SYSTEMS. NO PUBLICATION, DISTRIBUTION OR COPIES MAY BE MADE WITHOUT THE WRITTEN CONSENT OF HUBBELL POWER SYSTEMS. HUBBELL POWER SYSTEMS UNPUBLISHED. ALL RIGHTS RESERVED UNDER THE COPYRIGHT LAWS.		SIZE SC	DWG NO. SA110-10031
DO NOT SCALE THIS DRAWING	DRN BY KSH	DATE 8/12/04	REV A
		SHEET 1/3	