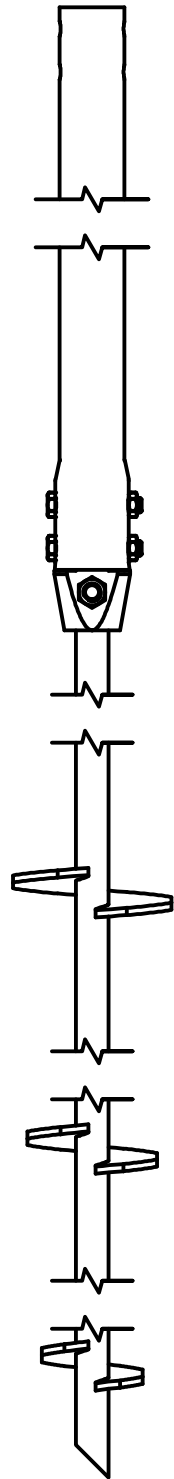
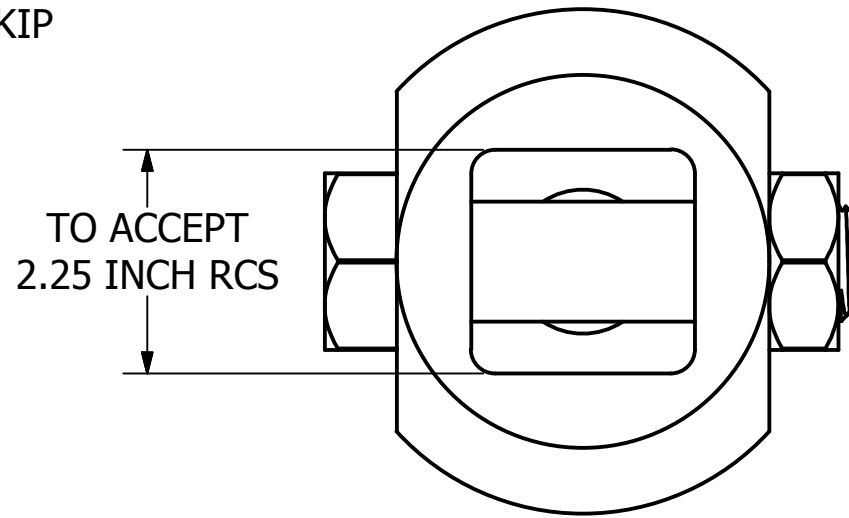


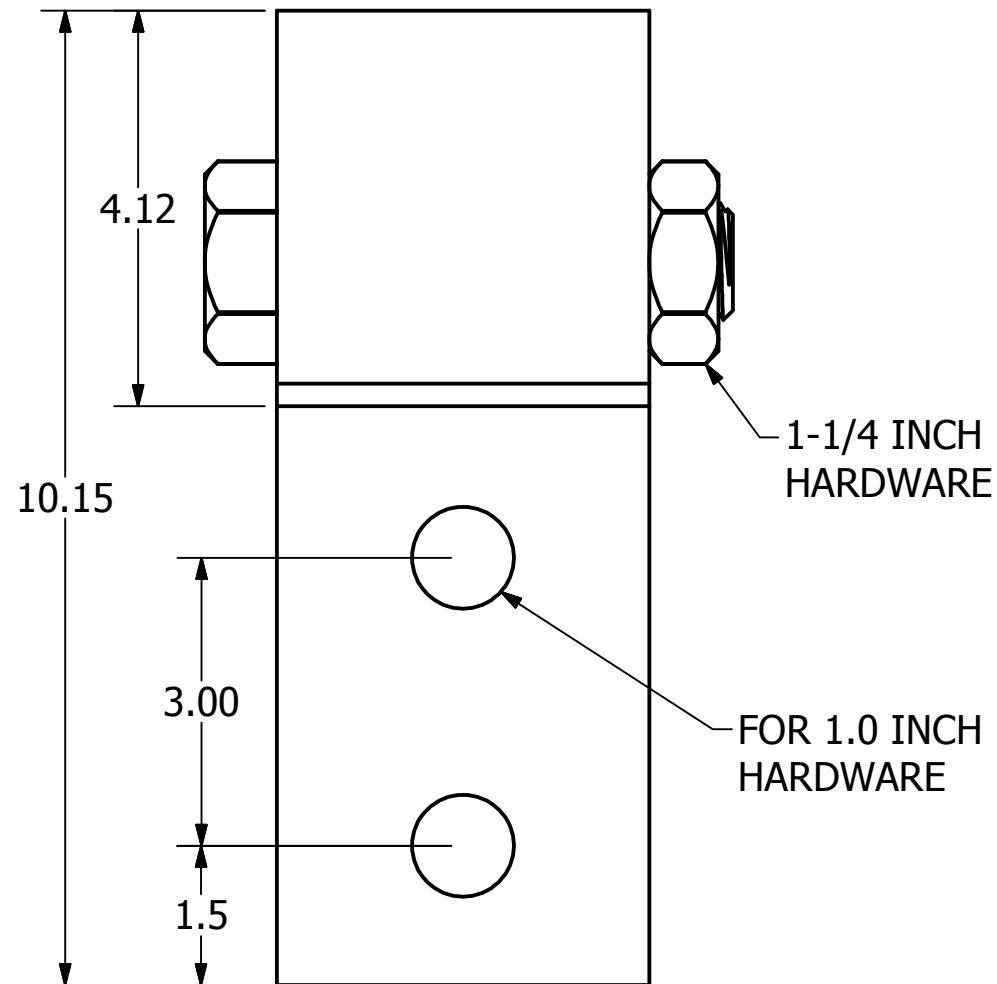
TORQUE RATING: 21,000 FT-LBS
 COMPRESSION* RATING: 147 KIP
 *BASED ON $K_t = 7$ FT-1



TYPICAL PIER INSTALLATION

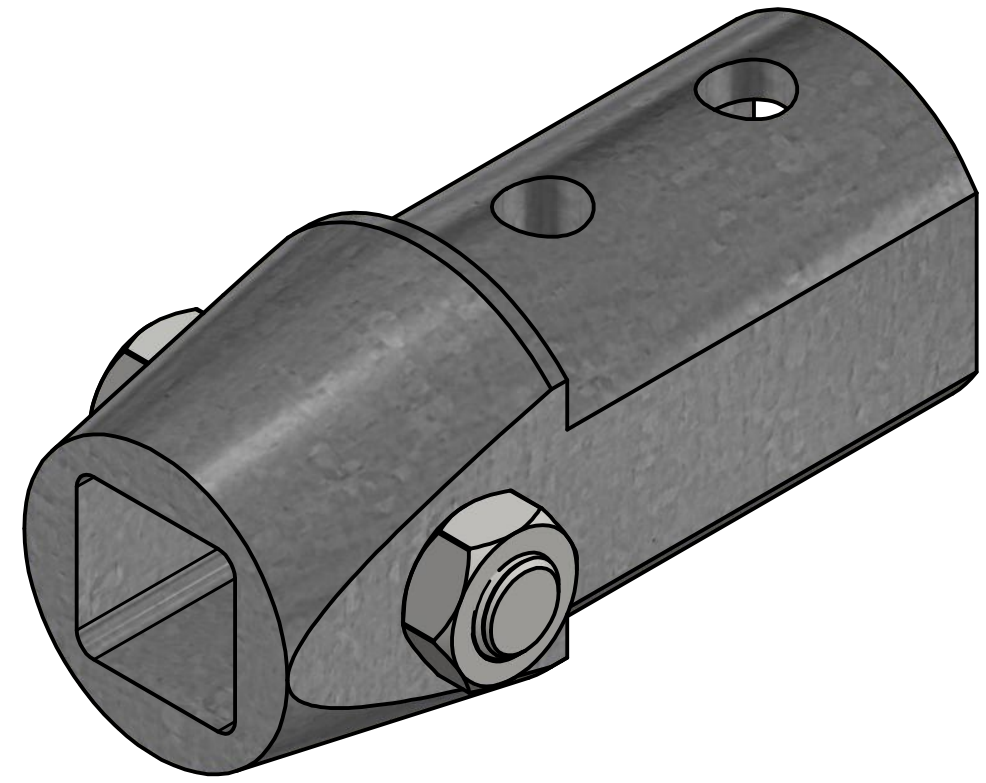


TO ACCEPT
2.25 INCH RCS



1-1/4 INCH
HARDWARE

FOR 1.0 INCH
HARDWARE



* * NOTES * *

1. MAT'L: CAST DUCTILE IRON PER ASTM A536 65-45-12
2. FINISH: HOT DIP GALVAINZE PER ASTM A153
3. HARDWARE: INCLUDES (1) 1-1/4 INCH HEX HEAD BOLT AND NUT PER ASTM A193 GRADE B7.

CHANCE [®]		HUBBELL [®] HUBBELL POWER SYSTEMS, INC. POWER SYSTEMS, INC.	
CONFIDENTIAL: THIS DRAWING AND ITS CONTENTS ARE CONFIDENTIAL AND THE EXCLUSIVE PROPERTY OF HUBBELL POWER SYSTEMS. NO PUBLICATION, DISTRIBUTION, OR COPIES MAY BE MADE WITHOUT THE WRITTEN CONSENT OF HUBBELL POWER SYSTEMS. HUBBELL POWER SYSTEMS UNPUBLISHED ALL RIGHTS RESERVED UNDER THE COPYRIGHT LAWS.		TITLE TRANSITION, CAST SS225 TO RS4500	
SIZE B	CAT / PART / ASSY NO. C1101418	DWG NO. SA1101418	REV C
DO NOT SCALE THIS DRAWING	DRN BY TMK	DATE 08/28/17	SHEET 1 OF 1