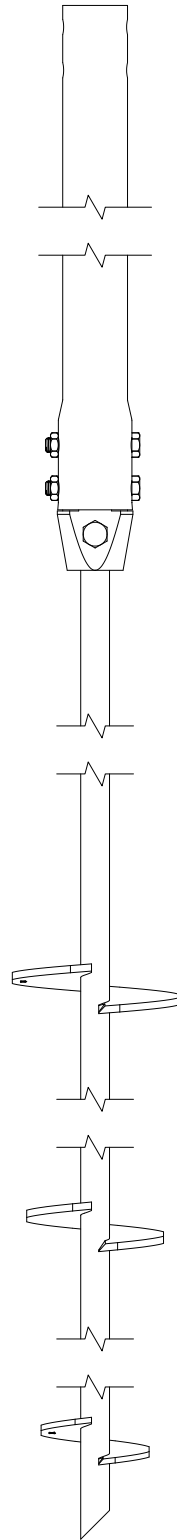
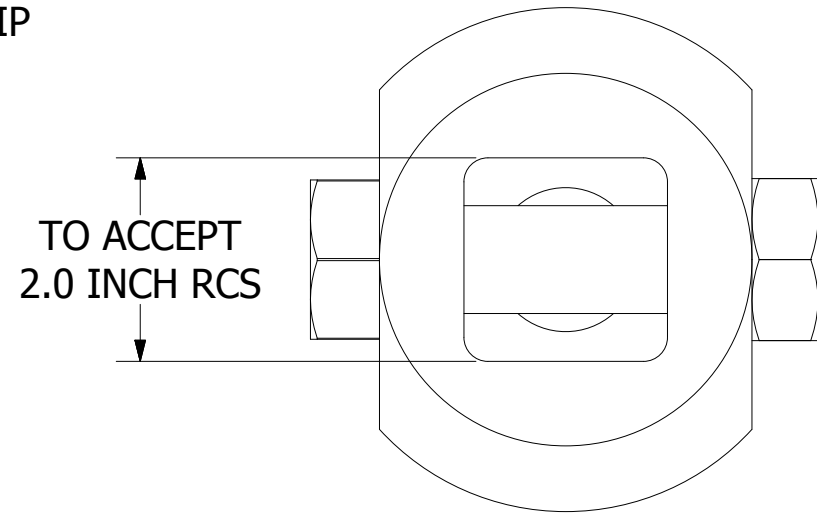


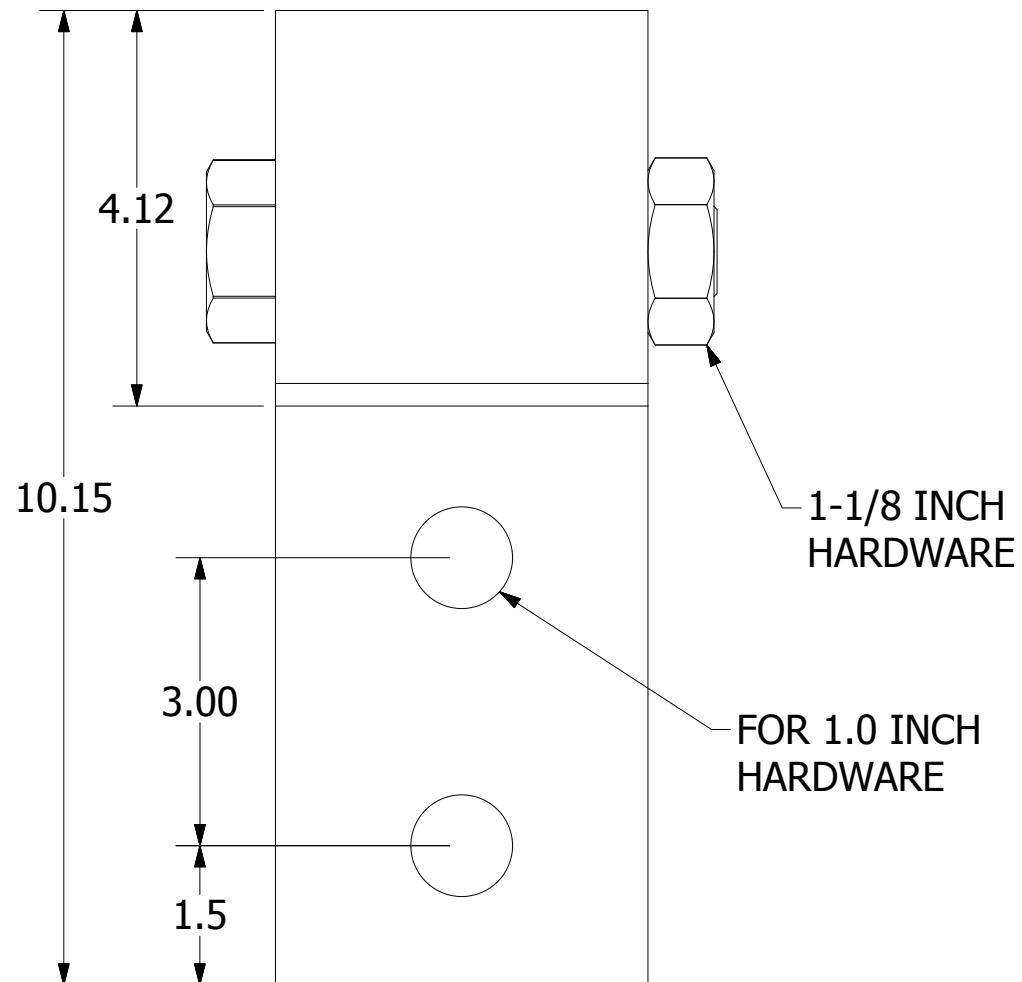
TORQUE RATING: 16,000 FT-LBS
 COMPRESSION* RATING: 112 KIP
 *BASED ON $K_t = 7 \text{ FT-1}$



TYPICAL PIER INSTALLATION

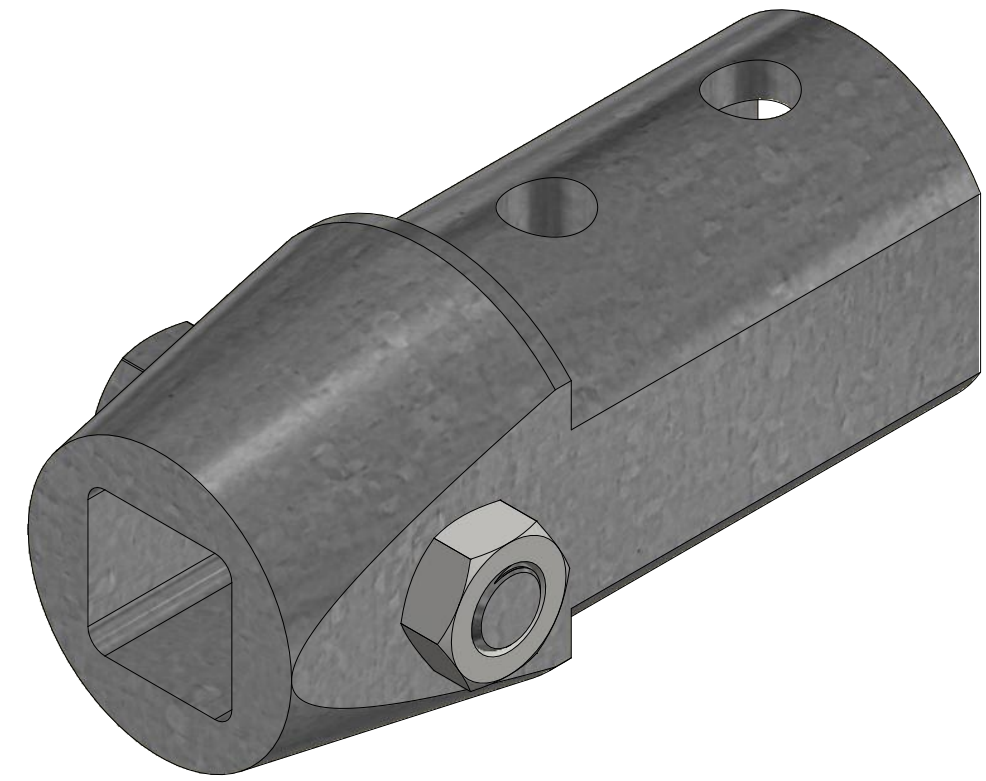


TO ACCEPT
2.0 INCH RCS



1-1/8 INCH
HARDWARE

FOR 1.0 INCH
HARDWARE



* * NOTES * *

1. MAT'L: CAST DUCTILE IRON PER ASTM A536 60-40-18
2. FINISH: HOT DIP GALVAINZE PER ASTM A153
3. HARDWARE: INCLUDES (1) 1-1/8 INCH HEX HEAD BOLT AND NUT PER ASTM A193 GRADE B7.

<h1>CHANCE[®]</h1>	HUBBELL POWER SYSTEMS, INC.			
	TITLE TRANSITION, CAST SS200 TO RS4500			
CONFIDENTIAL: THIS DRAWING AND ITS CONTENTS ARE CONFIDENTIAL AND THE EXCLUSIVE PROPERTY OF HUBBELL POWER SYSTEMS. NO PUBLICATION, DISTRIBUTION, OR COPIES MAY BE MADE WITHOUT THE WRITTEN CONSENT OF HUBBELL POWER SYSTEMS. HUBBELL POWER SYSTEMS UNPUBLISHED ALL RIGHTS RESERVED UNDER THE COPYRIGHT LAWS.	SIZE B	CAT / PART / ASSY NO. C1101443	DWG NO. SA1101443	REV A
DO NOT SCALE THIS DRAWING	DRN BY TMK	DATE 8/28/17	SHEET 1 OF 1	