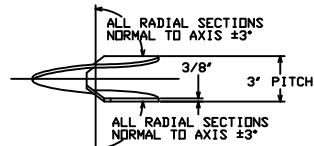
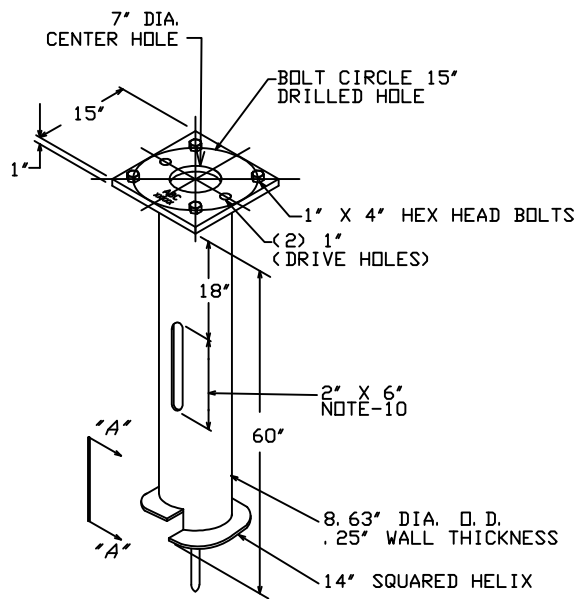


NOMINAL DIAMETER	MAXIMUM TORQUE RATING (LBS FT)	HELIX SIZE	OUTSIDE SHAFT DIA	BOLT CIRCLE DIAMETER	MOUNTING HEIGHT	CATALOG NUMBER
8"	20,000	14"	8-5/8"	15"	30"	T112-0462



HELIX MUST BE FORMED BY MATCHING METAL DIE
VIEW "A-A"
(SIDE VIEW OF TRUE HELICAL FORM)

LIGHTING FOUNDATION
CAT. NO. T112-0462

-NOTES-

- FINISH: HOT DIP GALVANIZE PER ASTM-A153 (LATEST REVISION).
- BASEPLATE TO BE PERPENDICULAR TO SHAFT AXIS ($\pm 1^\circ$) AND HOLE CENTERLINE TO BE CONCENTRIC ($\pm .188$) TO SHAFT AXIS.
- STENCIL MIN. 1/2 IN. LETTERS MANUFACTURER'S NUMBER AFTER GALVANIZING.
- PILOT POINT AND SHAFT AXES TO BE CONCENTRIC ($\pm .125$ FIM) AND IN LINE ($\pm 2^\circ$).
- PREHEAT, TUMBLEBLAST, HANDGRIND, AND CLEAN BASEPLATE, HELIX, AND PILOT POINT ON ALL WELDED PARTS.
- FLAMECUT IRREGULARITIES PERMISSIBLE: (1) VALLEYS NOT TO EXCEED 3/32 IN. BELOW NOMINAL SURFACE LEVEL, (2) PEAKS OR POSITIVE IRREGULARITIES NOT TO EXCEED 1/32 IN. ABOVE NOMINAL SURFACE LEVEL OR INTERSECTIONS OF NOMINAL SURFACES.
- MANUFACTURER TO HAVE IN EFFECT INDUSTRY RECOGNIZED WRITTEN QUALITY CONTROL FOR ALL MATERIALS AND MANUFACTURING PROCESSES.
- BASEPLATE IS PERMANENTLY STAMPED WITH MANUFACTURER'S IDENTIFICATION "ABC" IN 1/2" LETTERS AND THE JULIAN DATE CODE IN 1/4" LETTERS.
- ALL MATERIAL IS TO MEET THE FOLLOWING SPECIFICATIONS:
 BASEPLATE: ASTM A36-(LATEST REVISION) STRUCTURAL STEEL
 SHAFT: ASTM A252-(LATEST REVISION) GRADE 2, STEEL PIPE PILES. ALTERNATE MATERIAL: ASTM A53-(LATEST REVISION) TYPE E OR S, GRADE B, STEEL PIPE OR ASTM A500-(LATEST REVISION) GRADE B, STRUCTURAL STEEL TUBING.
 HELIX: ASTM A635-(LATEST REVISION) 3/8" THICK HOT ROLLED STEEL PLATE OR COIL.
 PILOT POINT: ASTM A575-(LATEST REVISION) 1-1/4" DIAMETER HOT ROLLED STEEL BAR
 BOLTS: HEX BOLT PER ANSI B-18.2.1, SAE J429 GRADE 5 1-8UNC-2A X 4" LG. HOT DIP GALV. PER ASTM A153
 NUTS: HEAVY HEX PER ASTM A194 GRADE 2H OR ASTM A563 GRADE DH, MEETING SUPPLEMENTARY REQUIREMENTS OF ASTM A563, 1-8UNC-2A PER ANSI B18.2.2.
- FLAME CUT TWO SLOTS IN SHAFT PERPENDICULAR TO THE BASEPLATE.
- BASEPLATE PERMANENTLY MARKED TO INDICATE CABLEWAY OPENING IN SHAFT.

CHANCE		HUBBELL POWER SYSTEMS <small>POWER SYSTEMS, INC.</small>	
<small>CONFIDENTIAL: THIS DRAWING AND ITS CONTENTS ARE CONFIDENTIAL AND THE EXCLUSIVE PROPERTY OF HUBBELL POWER SYSTEMS. NO PUBLICATION, DISTRIBUTION OR COPIES MAY BE MADE WITHOUT THE WRITTEN CONSENT OF HUBBELL POWER SYSTEMS. HUBBELL POWER SYSTEMS UNPUBLISHED ALL RIGHTS RESERVED UNDER THE COPYRIGHT LAWS.</small>		TITLE LIGHTING FOUNDATION	
SIZE	DWG NO.	REV	
SB	SA112-0462	D	
DO NOT SCALE THIS DRAWING	DRN BY KSH	DATE 11/9/04	SHEET 1/1