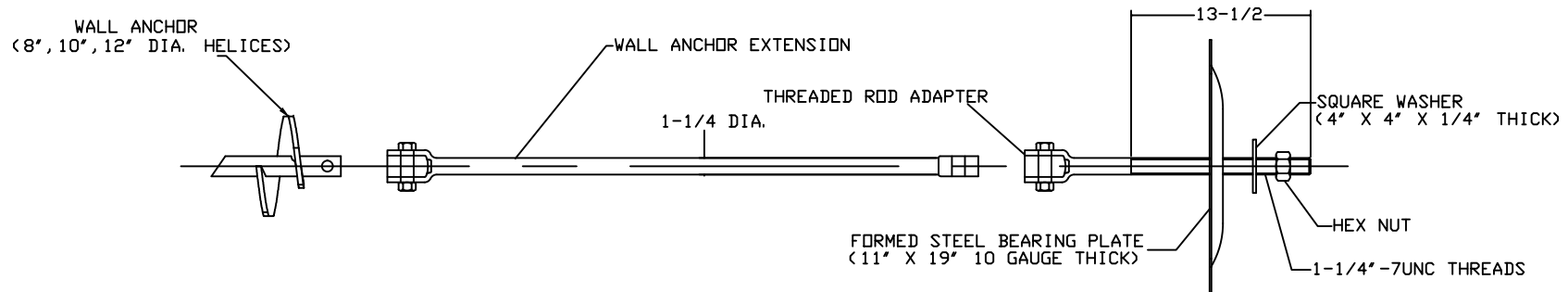


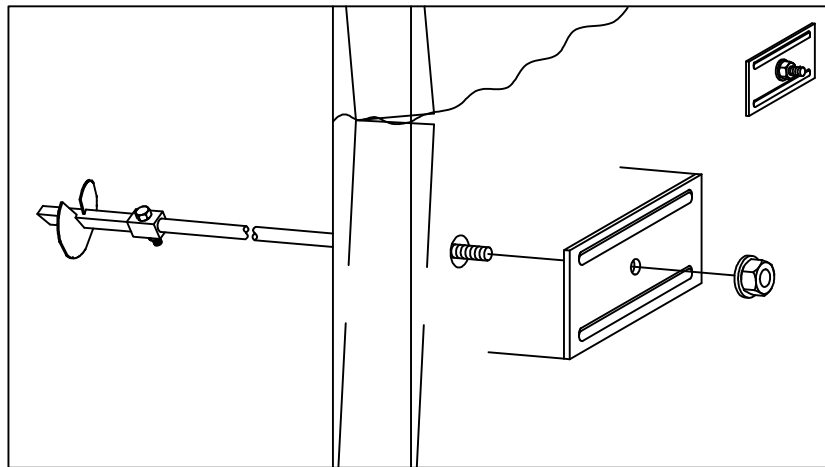
# HELICAL WALL ANCHOR KITS AND COMPONENTS




WALL ANCHOR KITS AND COMPONENTS							
CATALOG NO.	DESCRIPTIONS	C150-0032 20" THREADED ADAPTER	12698 7" X 1.25" EXTENSION	E150-0088 PLATE & WASHER ASSEMBLY	E150-0079 8" HELIX	E150-0252 10" HELIX	E150-0254 12" HELIX
T150-0080	8" KIT	X	X	X	X		
T150-0253	10" KIT	X	X	X		X	
T150-0255	12" KIT	X	X	X			X
T150-0447	48" THREADED ADAPTER						
12696	3.5' X 1.25' EXTENSION						
12697	5' X 1.25' EXTENSION						

## --NOTES--

1. ALL PARTS HOT DIP GALVANIZED PER ASTM A153 (LATEST REVISION).
2. MAXIMUM INSTALLATION TORQUE IS 2300 FT-LBS, FOR 1-1/4" DIA. ROD.
3. FOR DETAILED INSTALLATION INSTRUCTION PLEASE REFER TO A. B. CHANCE BULLETIN 01-8908-LATEST REVISION.



TYPICAL INSTALLATION OF WALL ANCHOR KIT

CHANCE		 <b>HUBBELL POWER SYSTEMS</b> <small>POWER SYSTEMS, INC.</small>	
TITLE			
WALL ANCHOR KIT			
<small>CONFIDENTIAL: THIS DRAWING AND ITS CONTENTS ARE CONFIDENTIAL AND THE EXCLUSIVE PROPERTY OF HUBBELL POWER SYSTEMS. NO PUBLICATION, DISTRIBUTION OR COPIES MAY BE MADE WITHOUT THE WRITTEN CONSENT OF HUBBELL POWER SYSTEMS. HUBBELL POWER SYSTEMS UNPUBLISHED. ALL RIGHTS RESERVED UNDER THE COPYRIGHT LAWS.</small>			
SIZE	DWG NO.	CAT / PART / ASSY NO.	REV
SC	SA150-0080	SEE CHART	B
DO NOT SCALE THIS DRAWING	DRN BY KSH	DATE 4/26/05	SHEET 1