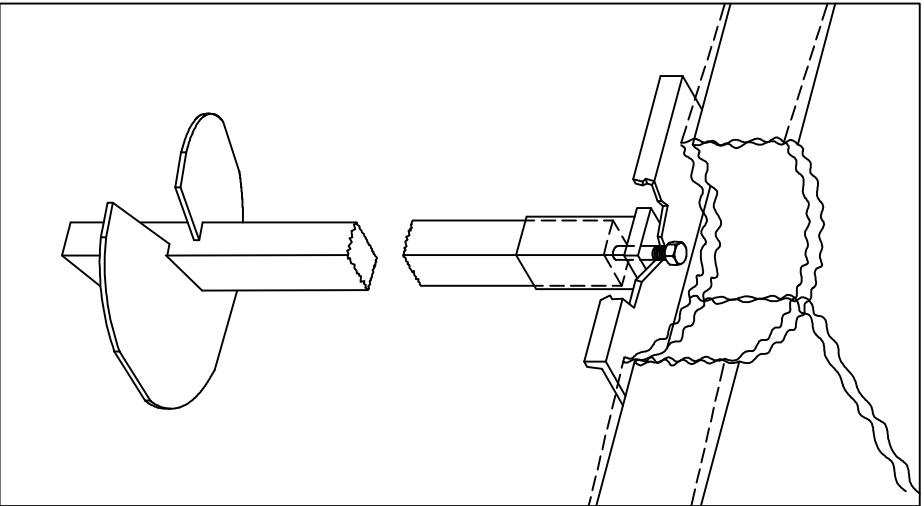
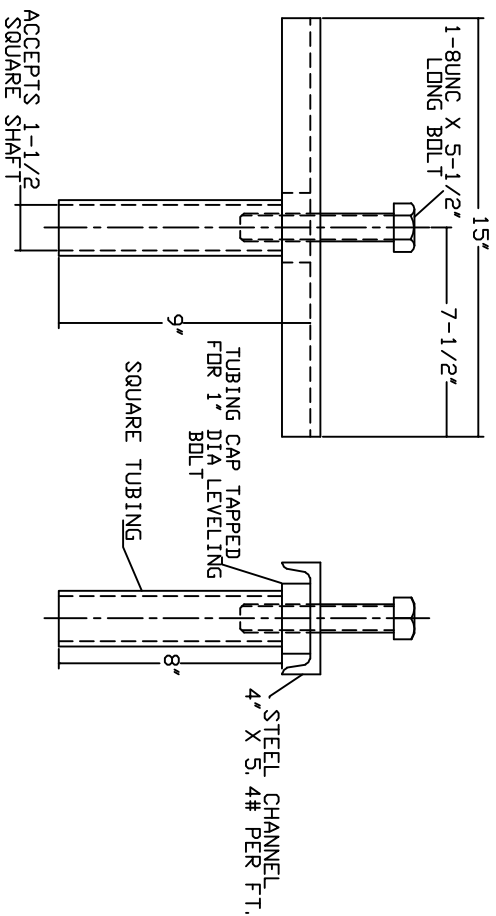


-NOTES-

1. HOT DIP GALVANIZE PER ASTM A-153.
2. MATERIAL SPECIFICATIONS:
TUBE : ASTM A500 STRUCTURAL STEEL TUBING.
CHANNEL: PER ASTM A36.
3. FOR DETAILED INSTALLATION INSTRUCTIONS, READ CHANGE BULLETIN 01-8909.
SEE ICC EVALUATION SERVICES, INC. EVALUATION REPORT NO. ER-5110 FOR ALLOWABLE VALUES AND/OR CONDITIONS OF USE CONCERNING MATERIAL PRESENTED IN THIS DOCUMENT.
4. FOR DETAILED INSTALLATION INSTRUCTIONS, READ CHANGE BULLETIN 01-8909.
SEE ICC EVALUATION SERVICES, INC. EVALUATION REPORT NO. ER-5110 FOR ALLOWABLE VALUES AND/OR CONDITIONS OF USE CONCERNING MATERIAL PRESENTED IN THIS DOCUMENT.



TYPICAL INSTALLATION
OF SLAB REPAIR BRACKET



MECHANICAL RATINGS ON BRACKET:
WORKING LOAD: 5,000 LB.
MAXIMUM LIFTING LOAD: 7500 LB.
ULTIMATE STRENGTH: 10,000 LB.

CATALOG NUMBER
T150-0085

ICC-ES
LISTED
ER-5110

CHANCE			
 HUBBELL POWER SYSTEMS			
TITLE CONCRETE SLAB BRACKET			
SIZE	DWG NO.	DAT / PART / ASSY NO.	REV
SC SA150-0085	T150-0085		C
DO NOT SCALE THIS DRAWING	DRN BY KSH	DATE 9/07/04	SHEET 1/1

CONSEQUENTIAL TO THIS DRAWING AND THE EXCLUSIVE PROPERTY OF HUBBELL POWER SYSTEMS, NO REPRODUCTION OR TRANSMISSION OF THIS DRAWING IS PERMITTED WITHOUT THE WRITTEN CONSENT OF HUBBELL POWER SYSTEMS. UNPUBLISHED ALL RIGHTS RESERVED UNDER THE APPLICABLE LAWS.