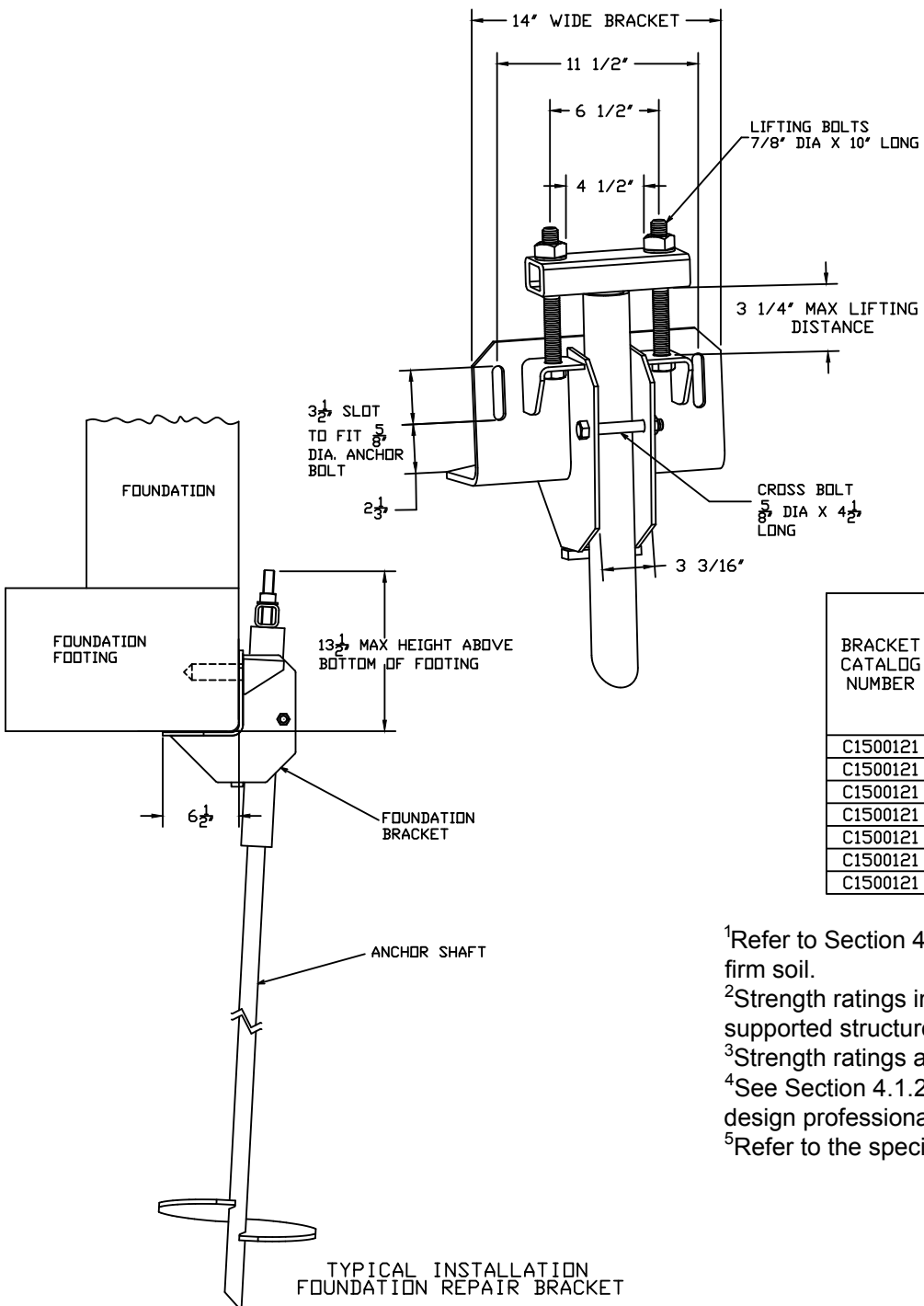


# STANDARD UNDERPINNING BRACKET FOR CHANCE TYPE SS5, SS150, AND RS2875 HELICAL PILES



-NOTES-

1. HOT DIP GALVANIZE PER ASTM A153-(LATEST REVISION).
2. ASSEMBLE COMPLETE AS SHOWN IN SIDE VIEW.
3. THE NUTS ON THE LIFTING BOLTS AND CROSS BOLTS MUST BE TIGHTENED TO ACHIEVE A SNUG-TIGHT CONDITION AS DEFINED IN SECTION J3 OF AISC 360-05; AS A MINIMUM, NUTS MUST BE TIGHTENED 1/4 TURN BEYOND HAND TIGHT CONDITION. DO NOT EXCEED 165 FT-LB OF TORQUE ON LIFTING BOLTS DURING STABILIZATION OR LOAD LOCK OFF.
4. RECOMMENDED ANCHOR SHAFT CUTOFF LEVEL ABOVE THE BOTTOM OF THE FOOTING IS 10" TO 11" FOR MAXIMUM LIFT DISTANCE.
5. FOR DETAILED INSTALLATION INSTRUCTIONS, READ CHANCE BULLETIN 01-9812.
6. MATERIAL SPECIFICATIONS:  
 BRACKET BODY : PER ASTM A36 AND ASTM A570 GR. 50.  
 SS5/SS150 T-PIPE TUBE : HOT ROLLED MECHANICAL TUBING PER ASTM A500.  
 RS2875.276 T-PIPE SHAFT: HOT ROLLED ROUND CORNERED SQUARE (RCS) SOLID STEEL BAR PER ASTM A29; MIN YEILD 70 KSI.  
 LIFTING BOLTS : HEX HEAD BOLT PER ASTM A325, TYPE 1.  
 CROSS BOLT : HEX HEAD BOLT PER ASTM A325, TYPE 1..
7. SEE ICC-ES EVALUTATION SERVICE, INC., EVALUATION REPORT NO. ESR-2794 FOR STRENGTH VALUES AND/OR CONDITIONS OF USE CONCERNING INFORMATION PRESENTED ON THIS DRAWING.

BRACKET CATALOG NUMBER	T-PIPE CATALOG NUMBER	PILE MODEL	ASD ALLOWABLE STRENGTH IN AXIAL COMPRESSION (kips) <sup>1,2,3,4</sup>					
			2500 psi CONCRETE <sup>5</sup>		3000 psi CONCRETE <sup>5</sup>		4000 psi CONCRETE <sup>5</sup>	
			FIRM SOIL	SOFT SOIL	FIRM SOIL	SOFT SOIL	FIRM SOIL	SOFT SOIL
C1500121	C1500486	SS5/150	21.7 (97)	16.0 (71)	21.7 (97)	16.0 (71)	21.7 (97)	16.0 (71)
C1500121	C1500487	SS5	30.9 (137)	16.0 (71)	34.2 (152)	16.0 (71)	39.4 (175)	16.0 (71)
C1500121	C1500487	SS150	34.6 (154)	16.0 (71)	38.2 (170)	16.0 (71)	43.7 (194)	16.0 (71)
C1500121	C2780001	RS2875.203	23.2 (103)	23.2 (103)	23.2 (103)	23.2 (103)	23.2 (103)	23.2 (103)
C1500121	C2780002	RS2875.203	32.4 (144.1)	29.0 (129)	34.2 (152)	29.0 (129)	34.3 (152.5)	34.3 (152.5)
C1500121	C2788011	RS2875.276	33.0 (147)	30.8 (137)	36.6 (163)	32.5 (145)	36.6 (163)	34.3 (152.5)
C1500121	C2788012	RS2875.276	23.2 (103)	23.2 (103)	23.2 (103)	23.2 (103)	23.2 (103)	23.2 (103)

<sup>1</sup>Refer to Section 4.1.3 of ESR-2794 for descriptions of fixed condition, pinned condition, soft soil and firm soil.

<sup>2</sup>Strength ratings include an allowance for corrosion over a 50-year service life and presume the supported structure is braced in accordance with IBC Section 1808.2.5.

<sup>3</sup>Strength ratings apply to the specific bracket, T-pipe and anchor/pile models listed.

<sup>4</sup>See Section 4.1.2 of ESR-2794 for applicable limit states that must be evaluated by a registered design professional.

<sup>5</sup>Refer to the specified compressive strength of concrete at 28 days.

TYPICAL INSTALLATION  
FOUNDATION REPAIR BRACKET

ICC-ES  
LISTED

---

ESR-2794

CHANCE TOLERANCE CHART	HUBBELL POWER SYSTEMS	TITLE BRACKET, STANDARD UNDERPINNING BRACKET	
CONFIDENTIAL: THIS DRAWING AND ITS CONTENTS ARE CONFIDENTIAL AND THE EXCLUSIVE PROPERTY OF HUBBELL POWER SYSTEMS. NO PUBLICATION, DISTRIBUTION OR COPIES MAY BE MADE WITHOUT THE WRITTEN CONSENT OF HUBBELL POWER SYSTEMS. HUBBELL POWER SYSTEMS UNPUBLISHED. ALL RIGHTS RESERVED UNDER THE COPYRIGHT LAWS.			
SIZE C	DWG NO. SA150-0121	CAT / PART / ASSY NO. SEE CHART	REV P
DO NOT SCALE THIS DRAWING	DRN BY DMP	DATE 10/10/12	SHEET 1/1