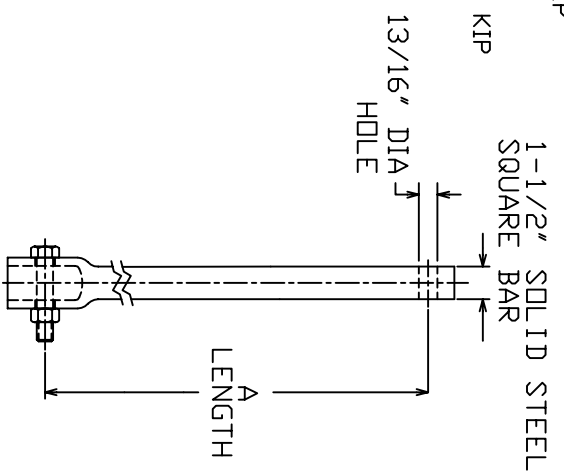
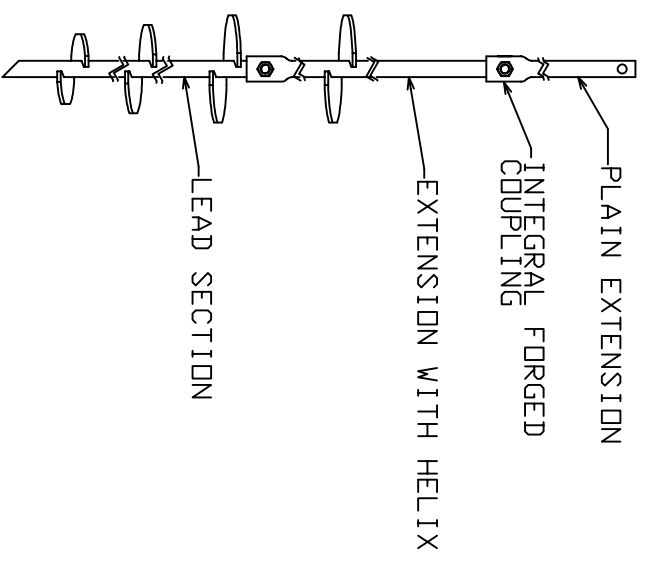


SS150 EXTENSIONS

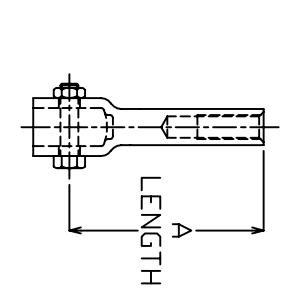
TORQUE STRENGTH RATING-7,000 FT-LB
 ULTIMATE CAPACITY*(TENSION/COMPRESSION)-70 KIP
 * BASED ON A TORQUE FACTOR (K->)=10
 SINGLE HELIX ULTIMATE STRENGTH-40 KIP
 ULTIMATE TENSION STRENGTH (COUPLING BOLT)-70 KIP

EXTENSION SECTION	
CAT. NO.	A
C150-0144	38'
C150-0145	59'
C150-0146	81'
C150-0175	124'
C150-0032	20'
C114-0009	11'
C110-1078	7'

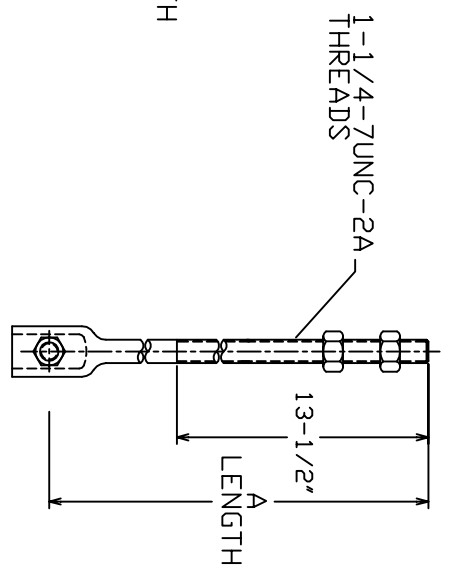
TYPICAL ANCHOR/PIER ASSEMBLY



PLAIN EXTENSION



1" DWYDAG ADAPTER C114-0009 AND C110-1078 FOR 1-1/2" SHAFT



THREADED ADAPTER C150-0032 FOR 1-1/2" SHAFT

==NOTES==

- HOT DIP GALVANIZED PER ASTM A153-(LATEST REVISION).
- LEAD AND EXTENSION SECTION LENGTHS AND HELIX SPACINGS ARE NOMINAL.
- SHAFT MATERIAL-HOT ROLLED ROUND-CORNERED-SQUARE (RCS) SOLID STEEL BARS PER ASTM A29; MINIMUM YIELD STRENGTH=90 KSI.
- COUPLING BOLTS: 3/4" DIAMETER X 3" LONG HEX HEAD PER ASTM A325 TYPE 1.
- MANUFACTURER TO HAVE IN EFFECT INDUSTRY RECOGNIZED WRITTEN QUALITY CONTROL FOR ALL MATERIALS AND MANUFACTURING PROCESSES.
- ALL WELDING TO BE DONE BY WELDERS CERTIFIED UNDER SECTION 5 OF THE AWS CODE D1.1.
- REFER TO SA150-10013 FOR LEAD SECTIONS AND HELICAL EXTENSIONS.

CHANCE			
CONFIDENTIAL. THIS DRAWING AND ITS CONTENTS ARE CONFIDENTIAL AND THE PROPERTY OF HUBBELL POWER SYSTEMS. NO REPRODUCTION, DISTRIBUTION OR COPIES MAY BE MADE WITHOUT THE WRITTEN PERMISSION OF HUBBELL POWER SYSTEMS. UNPUBLISHED RIGHTS RESERVED UNDER THE PATENT LAWS.		HUBBELL POWER SYSTEMS	
TITLE	SS150 EXTENSIONS	DATE	6/11/14
SIZE	DWG NO. SC SA150-0144	DRN BY	JVH
DO NOT SCALE THIS DRAWING	SEE CHART	DATE	6/11/14
REV	C	SHEET	2/2