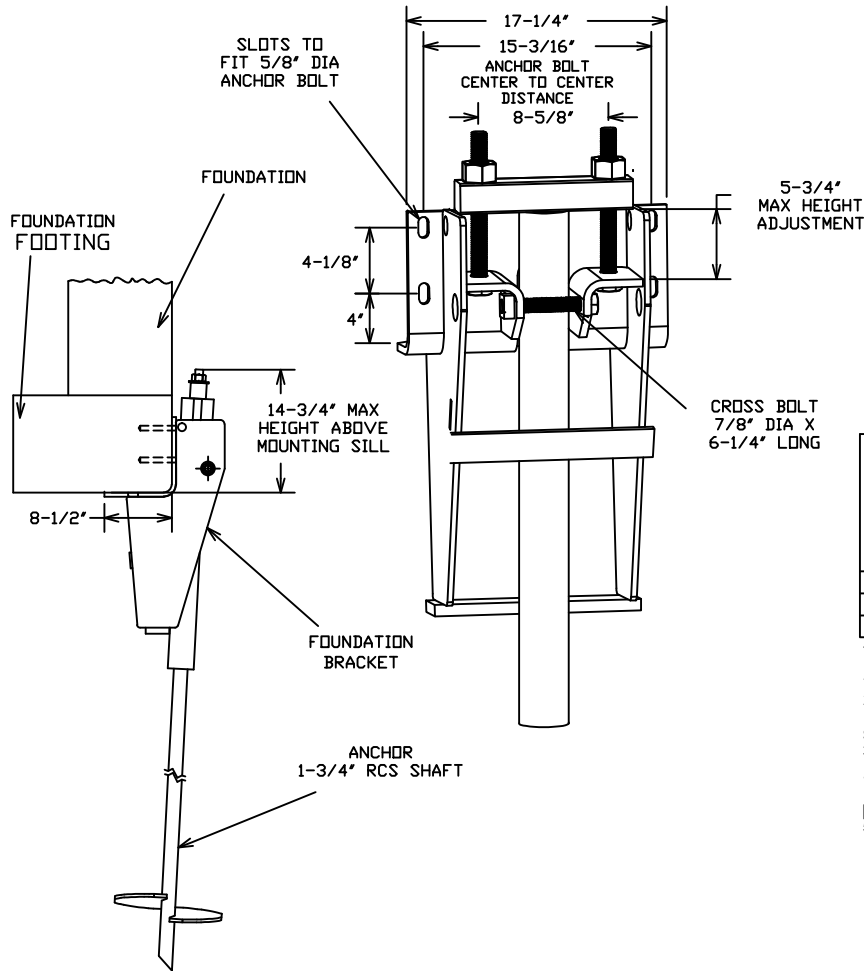


HEAVY DUTY UNDERPINNING BRACKET FOR CHANCE TYPE SS175, SS200 & RS3500.300 HELICAL PILES

-NOTES-

1. HOT DIP GALVANIZE PER ASTM A153-(LATEST REV.)
2. RECOMMENDED ANCHOR SHAFT CUTOFF LEVEL ABOVE THE BOTTOM OF THE FOOTING IS 11-1/4' FOR MAXIMUM LIFT DISTANCE.
3. THE NUTS ON THE LIFTING BOLTS AND CROSS BOLTS MUST BE TIGHTENED TO ACHIEVE A SNUG-TIGHT CONDITION AS DEFINED IN SECTION J3 OF AISC 360-05; AS A MINIMUM, NUTS MUST BE TIGHTENED 1/4 TURN BEYOND HAND TIGHT CONDITION.
4. FOR DETAILED INSTALLATION INSTRUCTIONS, READ CHANCE BULLETIN 01-0504.
5. MATERIAL SPECIFICATIONS:
 BRACKET BODY : PER ASTM A36.
 T-PIPE TUBE : MECHANICAL TUBING PER ASTM A512 OR A513.
 LIFTING BOLTS: HEX HEAD BOLT PER SAE ASTM A325 TYPE 1.
 CROSS BOLT : HEX HEAD BOLT PER SAE ASTM A325 TYPE 1.
6. SEE ICC-ES EVALUATION SERVICE, INC., EVALUATION REPORT NO. ESR-2794 FOR STRENGTH VALUES AND/OR CONDITIONS OF USE CONCERNING INFORMATION PRESENTED ON THIS DRAWING.
7. FOR A SS175 HELICAL PILE USE A C150-0474 T-PIPE.
 FOR A SS200 HELICAL PILE USE A C150-0508 T-PIPE.
 FOR A RS3500.300 HELICAL PIER USE A C150-0475 T-PIPE.



TYPICAL INSTALLATION
FOUNDATION REPAIR BRACKET

BRACKET CATALOG NUMBER	T-PIPE CATALOG NUMBER	PILE MODEL	ASD ALLOWABLE STRENGTH IN AXIAL COMPRESSION (klips) ^{1,2,3,4}					
			2500 psi CONCRETE ⁵		3000 psi CONCRETE ⁵		4000 psi CONCRETE ⁵	
			FIRM SOIL	SOFT SOIL	FIRM SOIL	SOFT SOIL	FIRM SOIL	SOFT SOIL
C1500147	C1500474	SS175	54.4	30.2	57.0	30.2	60.0	30.2
C1500147	C1500508	SS200	57	48.9	57.0	51.3	68.9	51.3
C1500147	C1500475	RS3500	48.9	48.9	51.3	51.3	51.3	51.3

¹Refer to Section 4.1.3 of ESR-2794 for descriptions of fixed condition, pinned condition, soft soil and firm soil.

²Strength ratings include an allowance for corrosion over a 50-year service life and presume the supported structure is braced in accordance with IBC Section 1808.2.5.

³Strength ratings apply to the specific bracket, T-pipe and anchor/pile models listed.

⁴See Section 4.1.2 of ESR-2794 for applicable limit states that must be evaluated by a registered design professional.

⁵Refer to the specified compressive strength of concrete at 28 days.

ICC-ES
LISTED
ESR-2794

CHANCE TOLERANCE CHART		HUBBELL POWER SYSTEMS	
TITLE HEAVY DUTY BRACKET ASSEMBLY			
SIZE	DWG NO.	CAT / PART / ASSY NO.	REV
SB	SA150-0147	C150-0147	H
DO NOT SCALE THIS DRAWING	DRN BY KSH	DATE 6/7/05	SHEET 1 OF 1