

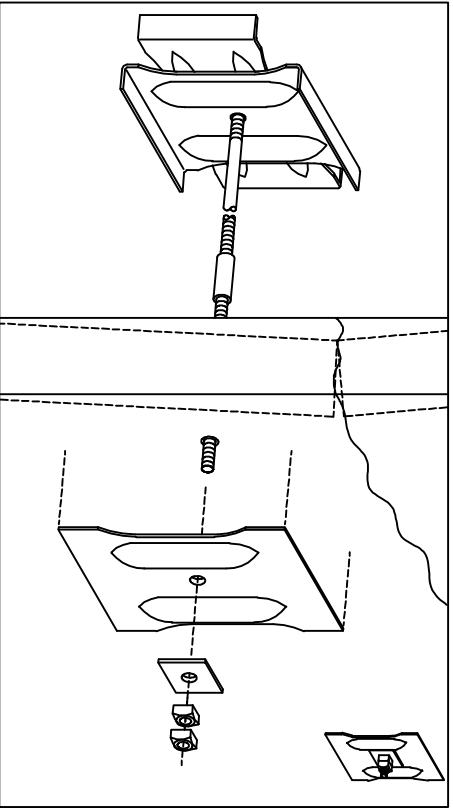
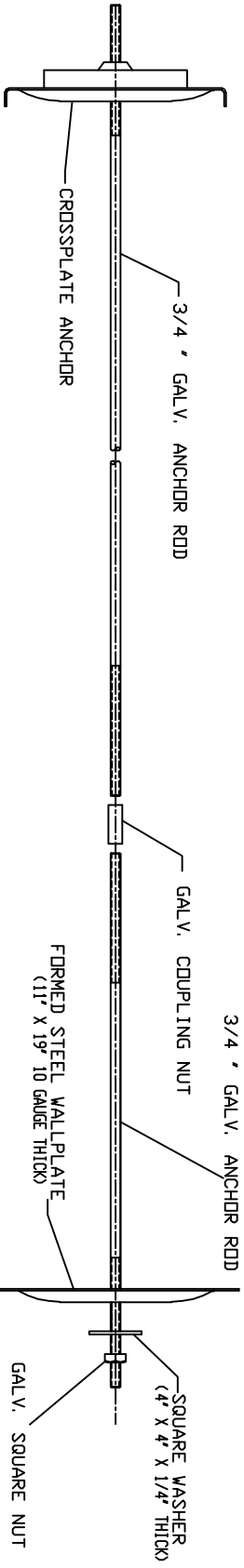
WALL ANCHOR KITS

CATALOG NOZ	DESCRIPTION
T150-0362	20' GALV. CROSSPLATE ANCHOR, 19' GALV. WALLPLATE W/ WASHER & 9' X 3/4" RDD W/ 2 NUTS
T150-0363	20' CLEAR-COATED CROSSPLATE ANCHOR, 19' CLEAR-COATED WALLPLATE W/ WASHER & 9' X 3/4" RDD W/ 2 NUTS
T150-0364	20' GALV. CROSSPLATE ANCHOR, 19' GALV. WALLPLATE W/ WASHER, 9' X 3/4" RDD W/ 2 NUTS & 4-1/2' X 3/4" RDD W/ 1 NUT & 1 COUPLING
T150-0365	20' CLEAR-COATED CROSSPLATE ANCHOR, 19' CLEAR-COATED WALLPLATE W/ WASHER, 9' X 3/4" RDD W/ 2 NUTS & 4-1/2' X 3/4" RDD W/ 1 NUT & 1 COUPLING
T150-0366	20' GALV. CROSSPLATE ANCHOR, 19' GALV. WALLPLATE W/ WASHER, 4-1/2' X 3/4" RDD W/ 1 NUT & 1 COUPLING & 4-1/2' X 3/4" RDD W/ 1 NUT
T150-0367	20' CLEAR-COATED CROSSPLATE ANCHOR, 19' CLEAR-COATED WALLPLATE W/ WASHER, 4-1/2' X 3/4" RDD W/ 1 NUT & 1 COUPLING & 4-1/2' X 3/4" RDD W/ 1 NUT

WALL ANCHOR ACCESSORY COMPONENTS

CATALOG NOZ	DESCRIPTION
T150-0348	FOUR EACH GALV. WASHERS, GALV. SQUARE NUTS & GALV. COUPLINGS (ALL FOR 3/4" RDD)
T150-0349	9' X 3/4" GALV. RDD W/ 18' OF THREAD BOTH ENDS
T150-0350	4-1/2' X 3/4" GALV. RDD W/ 18' OF THREAD BOTH ENDS
T150-0351	4-1/2' X 3/4" RDD, ALL THREAD
T150-0372	25' GALV. WALLPLATE W/ GALV. WASHER
T150-0373	25' CLEAR-COATED WALLPLATE W/ CLEAR-COATED WASHER
T150-0374	24' GALV. CROSSPLATE ANCHOR
T150-0375	24' CLEAR-COATED CROSSPLATE ANCHOR

- NOTES--
1. MINIMUM ULTIMATE TENSILE STRENGTH OF 3/4" RDD IS 23,000 LBS.
 2. FOR DETAILED INSTALLATION INSTRUCTION PLEASE REFER TO A.B. CHANCE BULLETIN 31-9806-LATEST REVISION.



TYPICAL INSTALLATION OF DURA-GRIP® WALL ANCHOR KIT

CHANCE		HUBBEL POWER SYSTEMS	
CONSTRUCTION, THE DRAWING AND THE EXISTING CONDITIONS OF THE WORK SHALL BE THE RESPONSIBILITY OF THE CONTRACTOR. THE CONTRACTOR SHALL BE RESPONSIBLE FOR OBTAINING ALL NECESSARY PERMITS AND APPROVALS FROM THE LOCAL, STATE AND FEDERAL AUTHORITIES. THE CONTRACTOR SHALL BE RESPONSIBLE FOR OBTAINING ALL NECESSARY PERMITS AND APPROVALS FROM THE LOCAL, STATE AND FEDERAL AUTHORITIES. THE CONTRACTOR SHALL BE RESPONSIBLE FOR OBTAINING ALL NECESSARY PERMITS AND APPROVALS FROM THE LOCAL, STATE AND FEDERAL AUTHORITIES.		TITLE: KIT, DURA-GRIP WALL ANCHOR SIZE: 1/8" X 1/8" X 1/8" C: SA150-0364 SEE CHART DATE: 11-12-98 SHEET 1/1	