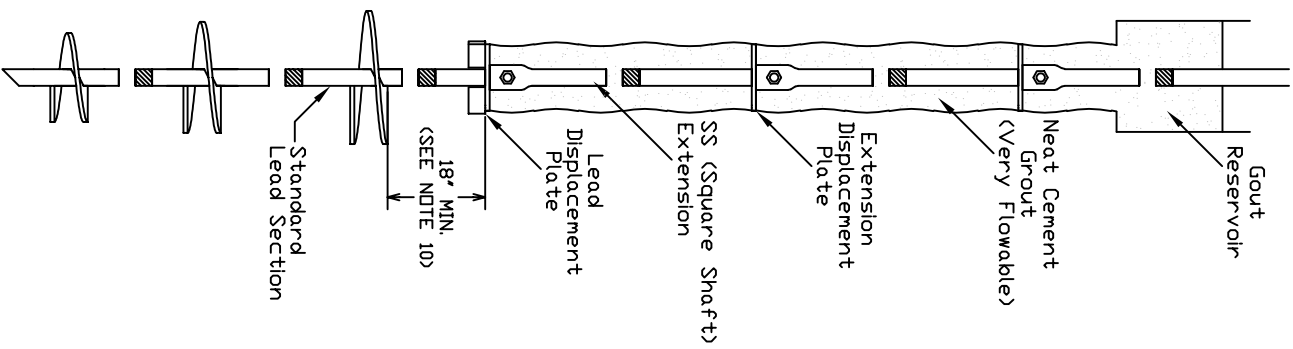


# HELICAL PULLDOWN® MICROPILE

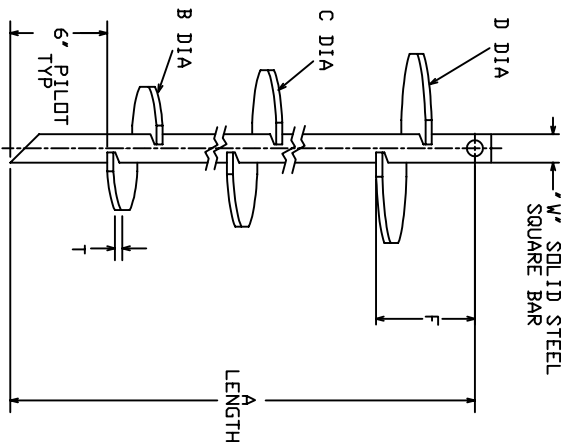
## HELICAL LEAD SECTIONS



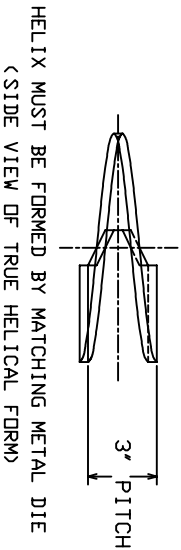
		LEAD SECTION										
CAT. #	SHAFT MATERIAL	TORQUE RATING (FT-LB)	A	B	C	D	F	W	T	HELIX STEEL GRADE		
C1500397	SS5	5700	82.25'	8'	10'	12'	22.25'	1.5'	.375"	50		
C1500398	SS5	5700	123'	10'	12'	14'	51'	1.5'	.375"	50		
C1500399	SS5	5700	123'	12'	14'	16'	39'	1.5'	.375"	50		
C1500400	SS150	7000	82.25'	6'	8'	10'	34.25'	1.5'	.375"	80		
C1501029	SS150	7000	82.25'	8'	10'	12'	22.25'	1.5'	.375"	80		
C1500401	SS175	10500	83'	8'	10'	12'	23'	1.75'	.375"	80		
C1500402	SS175	10500	129'	10'	12'	14'	57'	1.75'	.375"	80		
C1500403	SS200	16000	85'	8'	10'	12'	25'	2.0'	.5"	80		
C1500404	SS200	16000	131'	10'	12'	14'	59'	2.0'	.5"	80		

==NOTES==

- HOT DIP GALVANIZED PER ASTM A153-(LATEST REVISION),
- LEAD AND EXTENSION SECTION LENGTHS AND HELIX SPACINGS ARE NOMINAL.
- NOMINAL SPACING BETWEEN HELIX PLATES IS THREE TIMES THE DIAMETER OF THE LOWER HELIX.
- SHAFT MATERIAL-HOT ROLLED ROUND-CORNERED SQUARE (RCS) SOLID STEEL BARS
- ASTM A29 MINIMUM YIELD STRENGTH=70 KSI (SS5); 90 KSI (SS150, SS175, SS200).
- HEX MATERIAL-HOT ROLLED LOW CARBON STEEL SHEET, STRIP, OR PLATE PER ASTM A572, OR A1018, OR A656.
- MANUFACTURER TO HAVE IN EFFECT INDUSTRY RECOGNIZED WRITTEN QUALITY CONTROL FOR ALL MATERIALS AND MANUFACTURING PROCESSES.
- ALL WELDING TO BE DONE BY WELDERS CERTIFIED UNDER SECTION 5 OF THE AWS CODE D1.1.
- REFER TO SA1500047 FOR SS5 PLAIN EXTENSION AND TERMINATIONS.
- REFER TO SA1500144 FOR SS150 PLAIN EXTENSION AND TERMINATIONS.
- REFER TO SA1500183 FOR SS175 PLAIN EXTENSION AND TERMINATIONS.
- REFER TO SA1500330 FOR LEAD AND EXTENSION DISPLACEMENT PLATES.
- REFER TO SA1500338 FOR CASED LEAD AND EXTENSION DISPLACEMENT PLATES.
- HELICES HAVE A SHARPENED LEADING EDGE
- STANDARD SQUARE SHAFT LEAD SECTIONS CAN BE USED PROVIDED HELIX TO LEAD DISPLACEMENT PLATE SPACING OF 18" MIN. IS MAINTAINED.



TYPICAL UNCASSED APPLICATION



CHANCE

HUBBELL POWER SYSTEMS

HELICAL PULLDOWN MICROPILE

SIZE | DWG NO. | CAT / PART / ASST NO. | REV

DO NOT SCALE | SCI SA1500397 | SEE TABLE | ID

THIS DRAWING | DRN BY: BLJ | DATE 10/26/2021 | SHEET 1/1

CONFIDENTIAL: THIS DRAWING AND ITS CONTENTS ARE CONFIDENTIAL AND THE EXCLUSIVE PROPERTY OF HUBBELL POWER SYSTEMS. NO REPRODUCTION, DISTRIBUTION OR COPIES MAY BE MADE WITHOUT THE WRITTEN CONSENT OF HUBBELL POWER SYSTEMS. UNPUBLISHED. ALL RIGHTS RESERVED UNDER THE COPYRIGHT LAWS.