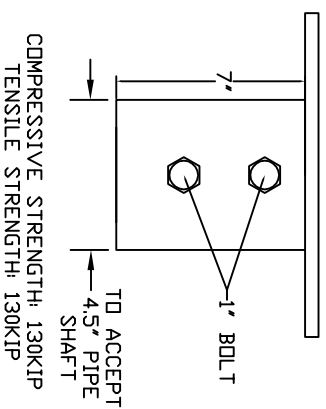
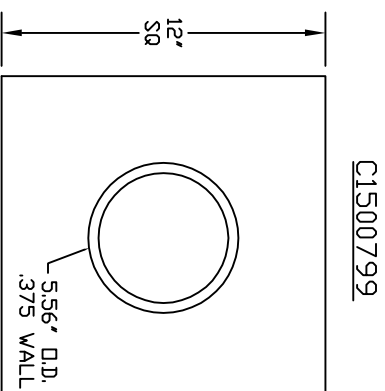
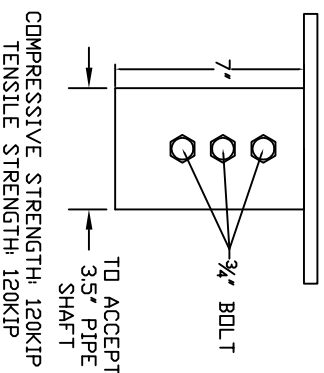
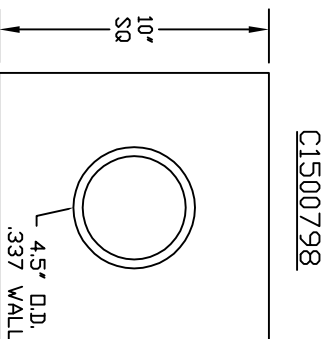
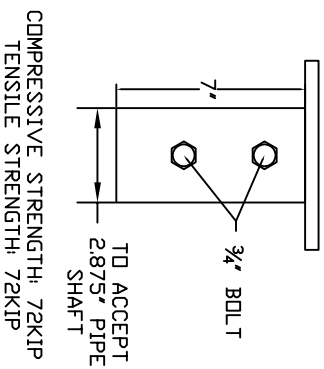
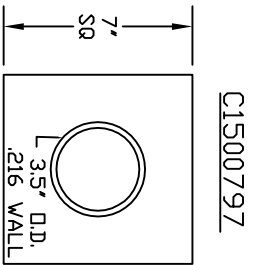


COMPRESSION/TENSION NEW CONSTRUCTION PILE CAPS



=NOTES=

1. FINISH: STANDARD CATALOG NUMBER IS MILL FINISH STEEL.
TO ORDER GALVANIZED FINISH ADD 'G' TO STANDARD CATALOG NUMBER.
2. MATERIAL SPECIFICATIONS:
PLATE: HOT ROLLED STEEL PLATE 1/2" THICK PER ASTM A572 GRD. 50.
PIPE: ERV PIPE PER ASTM A53 GRADE B OR PER ASTM A500 GRADE 50.
BOLTS: 3/4" BOLTS PER SAE J429 GRADE 5.
1" BOLTS PER GRADE 8.
3. HARDWARE INCLUDED WITH NEW CONSTRUCTION PILE CAPS SHOWN.

CHANCE TOLERANCE CHART		HUBBELL POWER SYSTEMS	
CONFIDENTIAL: THIS DRAWING AND ITS EXCLUSIVE PROPERTY OF HUBBELL POWER SYSTEMS. NO PUBLICATION, DISTRIBUTION OR COPIES MAY BE MADE WITHOUT THE WRITTEN CONSENT OF HUBBELL POWER SYSTEMS UNPUBLISHED. ALL RIGHTS RESERVED UNDER THE COPYRIGHT LAWS.			
DO NOT SCALE THIS DRAWING	SIZE / DWG NO. SB SA150-0797	CAT / PART / ASSY NO. SEE DRAWING	REV C
TITLE NEW CONSTRUCTION PILE CAPS	DWN BY JVH	DATE 1/19/12	SHEET 1 OF 1