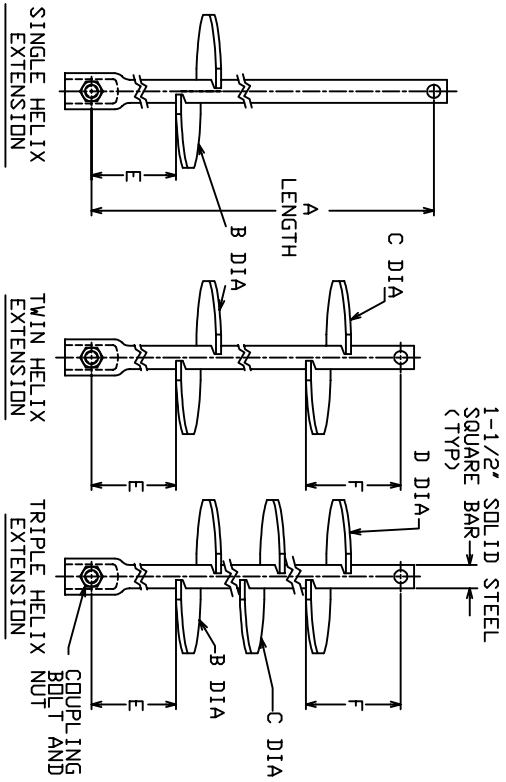


# SS150 HELICAL PIERS AND ANCHORS

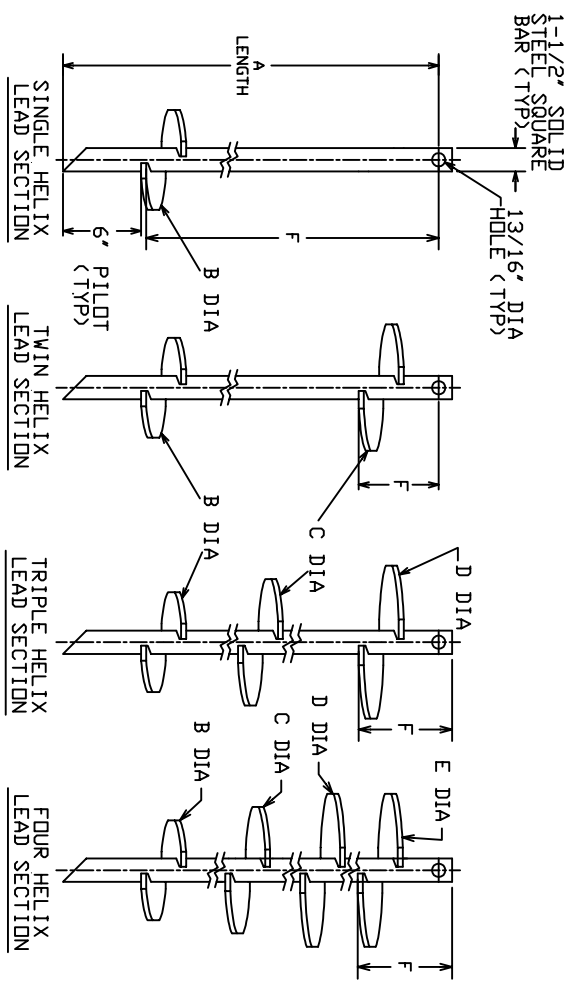
TORQUE STRENGTH\* RATING-7,000 FT-LB  
 ULTIMATE CAPACITY (TENSION/COMPRESSION)-70 KIP  
 \* BASED ON A TORQUE FACTOR (K<sub>t</sub>)=10  
 SINGLE HELIX ULTIMATE STRENGTH-40 KIP  
 ULTIMATE TENSION STRENGTH (COUPLING BOLT)-70 KIP



HELICAL EXTENSION SECTION						
CAT. NZL	A	B	C	D	E	F
C150-0176	47'	14"			37'	
C150-0177	81'	14"	14"		37'	8"
C150-0178	124'	14"	14"	14"	36'	8"
T150-0440	59'	14"			4'	

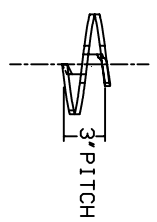
==NOTES==

- HOT DIP GALVANIZED PER ASTM A153-(LATEST REVISION).
- LEAD AND EXTENSION SECTION LENGTHS AND HELIX SPACINGS ARE NOMINAL.
- SHAFT MATERIAL-HOT ROLLED ROUND-CORNERED-SQUARE (RCS) SOLID STEEL BARS PER ASTM A29; MINIMUM YIELD STRENGTH=90 KSI.
- HELIX MATERIAL-HOT ROLLED LOW CARBON STEEL SHEET, STRIP, OR PLATE PER ASTM A656, DR A1018 GRADE 80; MINIMUM YIELD STRENGTH=80 KSI; 3/8" THICK.
- COUPLING BOLTS: 3/4" DIAMETER X 3" LONG HEX HEAD PER ASTM A325 TYPE 1.
- NOMINAL SPACING BETWEEN HELIX PLATES IS THREE TIMES THE DIAMETER OF THE LOWER HELIX.
- MANUFACTURER TO HAVE IN EFFECT INDUSTRY RECOGNIZED WRITTEN QUALITY CONTROL FOR ALL MATERIALS AND MANUFACTURING PROCESSES.
- ALL WELDING TO BE DONE BY WELDERS CERTIFIED UNDER SECTION 5 OF THE AWS CODE D1.1.
- REFER TO DRAWING SA150-0144 FOR PLAIN EXTENSIONS AND TERMINATIONS.

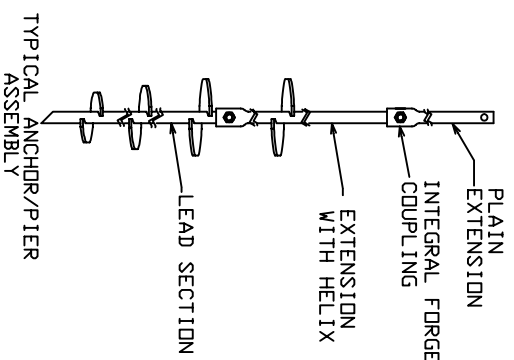


LEAD SECTION						
CAT. NZL	A	B	C	D	E	F
C150-0168	35'	8"	10"			6'
C150-0169	63'	8"	10"	12"		6'
C150-0170	123'	14"	14"	14"		33'
C150-0163	82'	10"	12"	14"		10'
C150-0400	82'-1/4'	6"	8"	10"		34'-1/4'
C150-0490	82'	8"	10"			52'
C150-0472	63'	8"	10"			33'
T150-0498*	59'	8"	10"			56'
C150-0165	123'	8"	10"	14"		10'
C1501261	35'	6"	10"	14"		29'
C1501029	82'	8"	10"	12"		22'

\* HELIX MATERIAL 1/2" THICK



HELIX MUST BE FORMED BY MATCHING METAL DIE (SIDE VIEW OF TRUE HELICAL FORM)



<b>CHANCE</b> TOLERANCE CHART		HUBBELL POWER SYSTEMS	
CONFIDENTIAL: THIS DRAWING AND ITS CONTENTS ARE CONFIDENTIAL AND THE PROPERTY OF HUBBELL POWER SYSTEMS. NO REPRODUCTION, DISTRIBUTION OR COPIES MAY BE MADE WITHOUT THE WRITTEN PERMISSION OF HUBBELL POWER SYSTEMS. UNPUBLISHED OR RIGHTS RESERVED UNDER THE PATENT LAWS.		SIZE SC SA150-10013	REV J
TITLE SS150 LEADS AND HELICAL EXTENSIONS		CAT / PART / ASSY NO. SEE CHART	DATE 6/11/14
DRAWN BY JVH		DATE 6/11/14	SHEET 1 OF 1