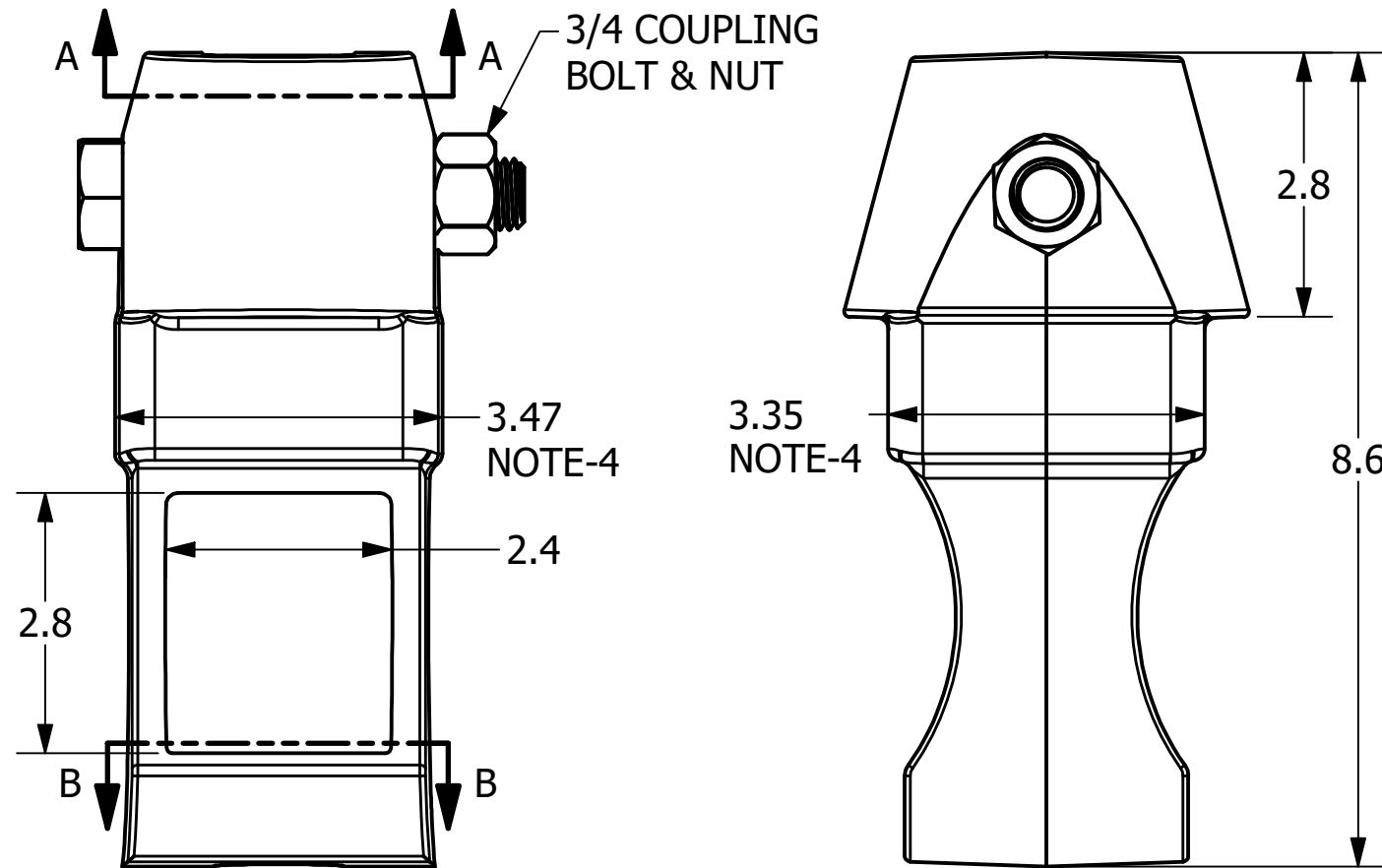
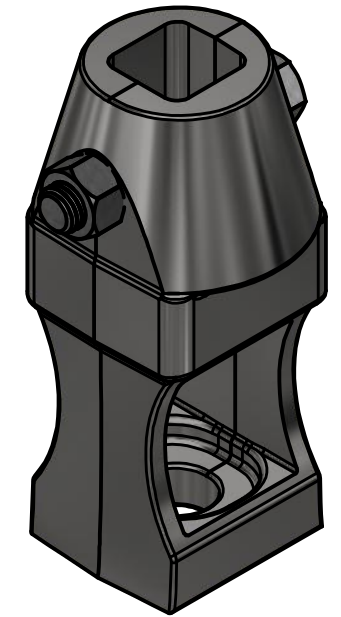
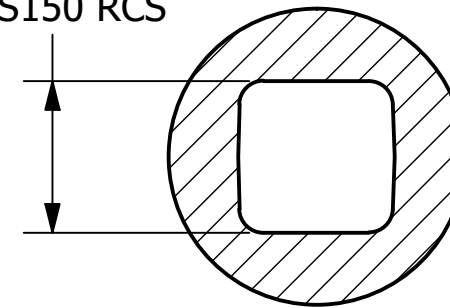


NOTES

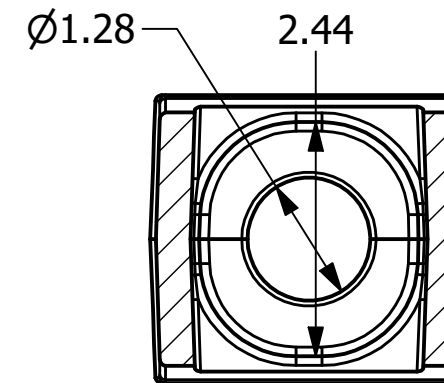
1. CASTING MATERIAL: 65-45-12 DUCTILE IRON PER ASTM A536
HARDWARE MATERIAL: STEEL
2. FINISH: HOT DIP GALVANIZED PER ASTM A153.
3. 2" ROUND WASHER INCLUDED FOR APPLICATIONS WITH 1" UNC THREADBAR
4. SQUARE SECTION INTENDED TO FIT STANDARD 4" X 4" SQUARE TUBE WITH 1/4" WALL FOR COUNTERSINK APPLICATIONS.
5. CAPABLE OF MEETING THE SAME TENSILE AND TORQUE REQUIREMENTS OF SS150 RCS PRODUCT FAMILY (70,000 LBS AND 7,000 FT-LBS). RATING WILL BE DEPENDENT ON THREADBAR USED.



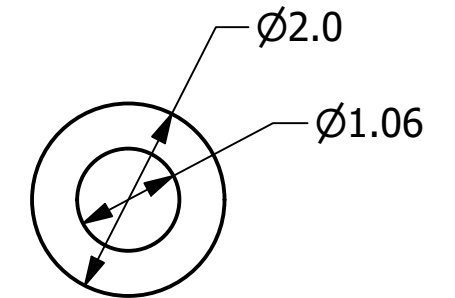
ACCEPTS
SS5/SS150 RCS



SECTION A-A



SECTION B-B



NOTE-3

CHANCE ®		HUBBELL ® POWER SYSTEMS, INC.		HUBBELL POWER SYSTEMS, INC.	
CONFIDENTIAL: THIS DRAWING AND ITS CONTENTS ARE CONFIDENTIAL AND THE EXCLUSIVE PROPERTY OF HUBBELL POWER SYSTEMS. NO PUBLICATION, DISTRIBUTION, OR COPIES MAY BE MADE WITHOUT THE WRITTEN CONSENT OF HUBBELL POWER SYSTEMS. HUBBELL POWER SYSTEMS UNPUBLISHED ALL RIGHTS RESERVED UNDER THE COPYRIGHT LAWS.		TITLE ADAPTER, SS5/SS150 THREADBAR			
SIZE B	CAT / PART / ASSY NO. C1502189	DWG NO. SA1502189	REV A		
DO NOT SCALE THIS DRAWING	DRN BY WILSON	DATE 02/23/23	SHEET 1 OF 1		