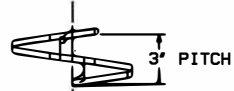
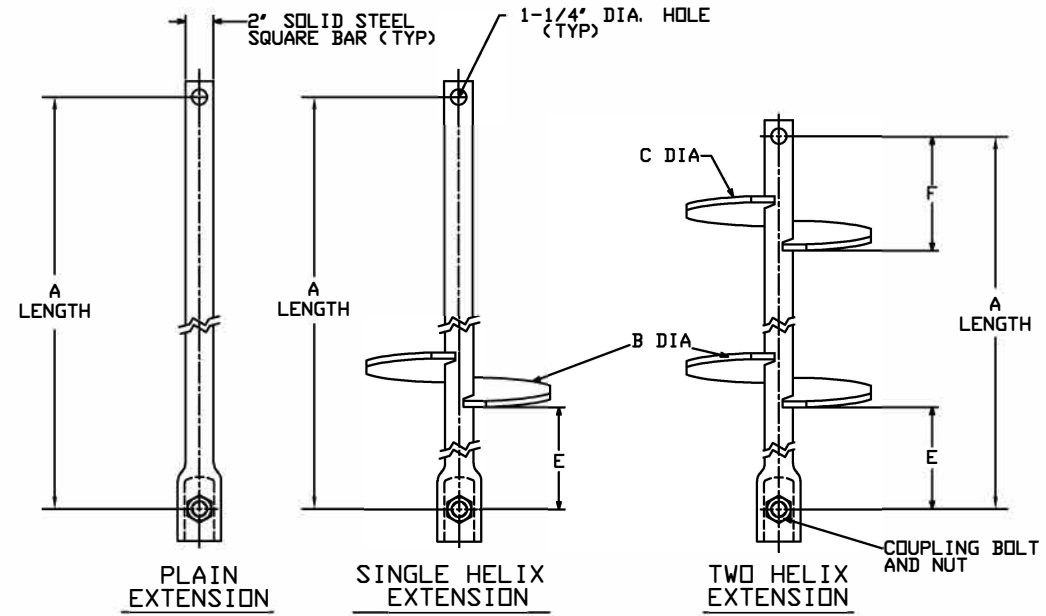
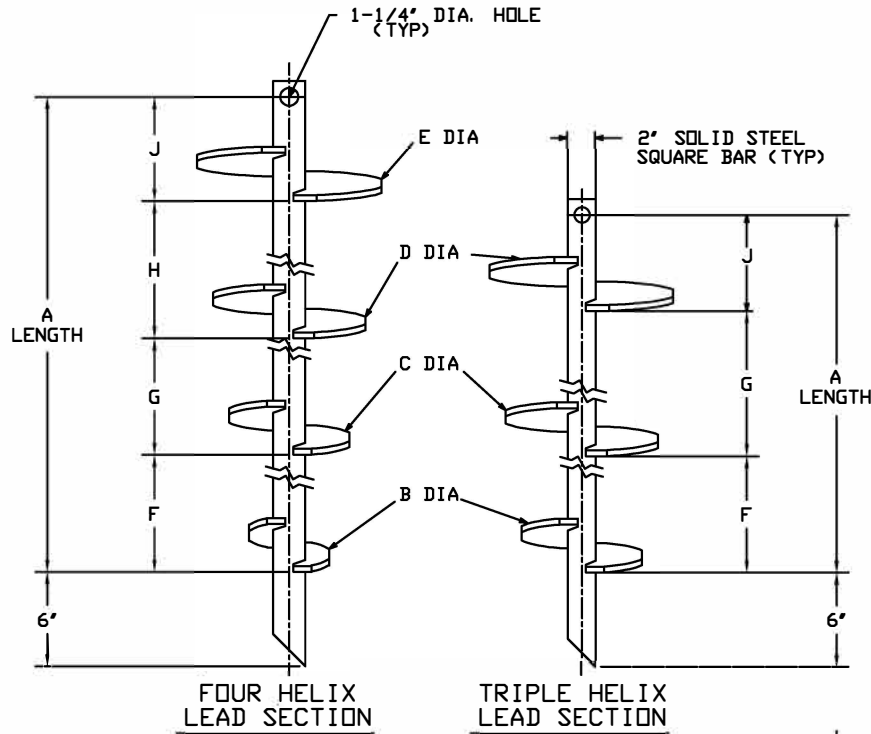


TORQUE STRENGTH* RATING-16,000 FT-LB
 ULTIMATE CAPACITY (COMPRESSION)-160 KIP
 * BASED ON A TORQUE FACTOR (Kt)-10
 ULTIMATE TENSION STRENGTH (COUPLING BOLT)-150 KIP

SS200 HELICAL PIERS AND ANCHORS



HELIX MUST BE FORMED BY MATCHING METAL DIE
 (SIDE VIEW OF TRUE HELICAL FORM)

LEAD SECTION									
CAT. NO.	A	B	C	D	E	F	G	H	J
C1500403	79'	8'	10'	12'		24'	30'		25'
C1502196	60'	6'	8'	10'		18'	24'		17'
C1502198	60'	8'	10'	12'		24'	30'		6'
C1502202	125'	14'	14'	14'		42'	42'		41'
C1502197	79'	6'	8'	10'	12'	18'	24'	30'	7'
C1502200	125'	8'	10'	12'	14'	24'	30'	36'	35'
C1502201	79'	10'	12'	14'		30'	36'		13'
C1502199	125'	8'	10'	12'		24'	30'		71'
C1502093	79'	12'	14'			36'			44'
C1501735	125'	10'	12'			30'			97'
C1502221	79'	14'							

==NOTES==

- HOT DIP GALVANIZED PER ASTM A153-(LATEST REVISION).
- LEAD AND EXTENSION SECTION LENGTHS AND HELIX SPACINGS ARE NOMINAL.
- NOMINAL SPACING BETWEEN HELIX PLATES IS THREE TIMES THE DIAMETER OF THE LOWER HELIX.
- SHAFT MATERIAL-HOT ROLLED ROUND-CORNERED-SQUARE (RCS) SOLID STEEL BARS PER ASTM A29; MINIMUM YIELD STRENGTH=90 KSI.
- HELIX MATERIAL-HOT ROLLED LOW ALLOY STEEL SHEET, STRIP, OR PLATE PER ASTM A656, OR A1018 GRADE 80; MINIMUM YIELD STRENGTH=80 KSI, 1/2" THICK.
- COUPLING BOLTS: 1-1/8" DIAMETER X 4-1/4" LONG HEX HEAD PER ASTM A193 GRADE B7.
- MANUFACTURER TO HAVE IN EFFECT INDUSTRY RECOGNIZED WRITTEN QUALITY CONTROL FOR ALL MATERIALS AND MANUFACTURING PROCESSES.
- ALL WELDING TO BE DONE BY WELDERS QUALIFIED PER AWS CODE D1.1.

PLAIN EXTENSION	
CAT. NO.	A
C1502203	37'
C1502204	58'
C1502205	80'
C1502206	123'

HELICAL EXTENSION					
CAT. NO.	A	B	C	E	F
C1502207	45'	14'		35'	
C1502208	79'	14'	14'	36'	6'
C1502055	42'	16'		16'	

CHANCE

CONFIDENTIAL: THIS DRAWING AND ITS CONTENTS ARE CONFIDENTIAL AND THE EXCLUSIVE PROPERTY OF HUBBELL POWER SYSTEMS. NO PUBLICATION, DISTRIBUTION OR COPIES MAY BE MADE WITHOUT THE WRITTEN CONSENT OF HUBBELL POWER SYSTEMS. HUBBELL POWER SYSTEMS UNPUBLISHED ALL RIGHTS RESERVED UNDER THE COPYRIGHT LAWS.

HUBBELL POWER SYSTEMS

SS200 LEAD SECTIONS AND EXTENSIONS

SIZE DWG NO. SC SA1502196 CAT / PART / ASSY NO. SEE TABLE REV A

DO NOT SCALE THIS DRAWING DRN BY BLJ DATE 5/24/24 SHEET 1/1