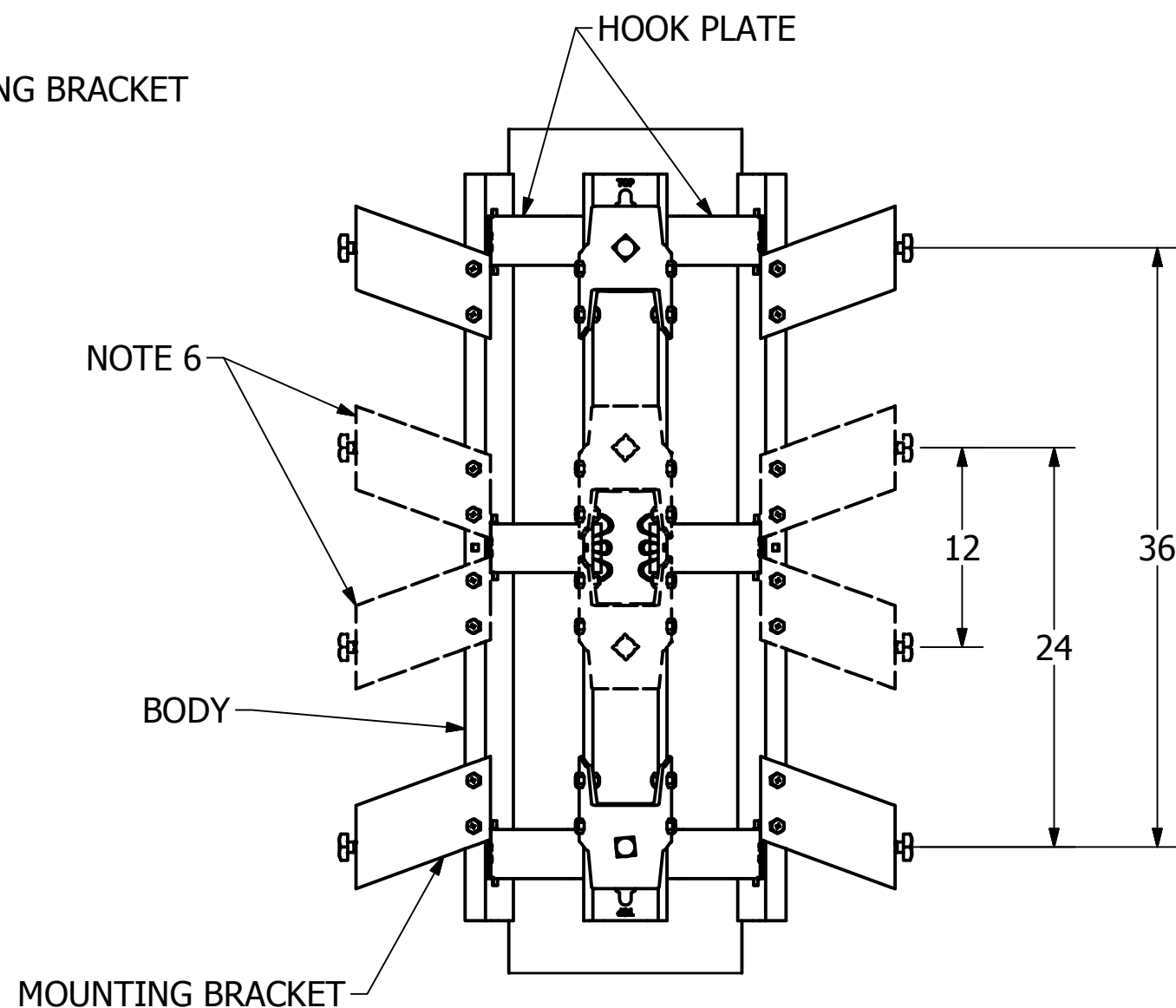



==NOTES==

1. ASSEMBLED COMPLETE AS SHOWN.
2. MATERIAL: ALUMINUM (RACK BODY)
GALVANIZED STEEL (HARDWARE)
3. ASSEMBLIES SUPPLIED WITH 5/8" X 2-1/2" HIGH STRENGTH (GRADE 5) BOLTS
WITH 3/4" BOLT SIZED SQUARE HEAD (QTY. 6) FOR USE WITH ALL TRANSFORMER
LUGS (HEX NUTS AND LOCKWASHERS INCLUDED).
4. ONE STAINLESS STEEL GROUNDING LUG IS ASSEMBLED TO EACH CLUSTER
MOUNT. IT CAN BE RELOCATED AS DESIRED FOR EASY ATTACHMENT OF GROUND
WIRE.
5. EACH TRANSFORMER RACK IS PACKAGED IN PLASTIC BAG TO ALLOW FOR
OUTSIDE STORAGE.
6. ATTACHMENT BRACKETS COME PREINSTALLED FROM THE FACTORY AT 36"
SPACING. THEY CAN BE RELOCATED IN THE FIELD TO ACCOMODATE 12" AND 24"
SPACING.



<div>CHANCE®</div>		<div><div>POWER SYSTEMS, INC.</div></div>		HUBBELL POWER SYSTEMS, INC.	
<div>CONFIDENTIAL: THIS DRAWING AND ITS CONTENTS ARE CONFIDENTIAL AND THE EXCLUSIVE PROPERTY OF HUBBELL POWER SYSTEMS. NO PUBLICATION, DISTRIBUTION, OR COPIES MAY BE MADE WITHOUT THE WRITTEN CONSENT OF HUBBELL POWER SYSTEMS. HUBBELL POWER SYSTEMS UNPUBLISHED ALL RIGHTS RESERVED UNDER THE COPYRIGHT LAWS.</div>		TITLE			
		MOUNT, JUMBO CLUSTER			
		SIZE B	CAT / PART / ASSY NO. C15M391436CES		DWG NO. SA15M391436CES
DO NOT SCALE THIS DRAWING		DRN BY RNS		DATE 09/11/19	SHEET 1 OF 1