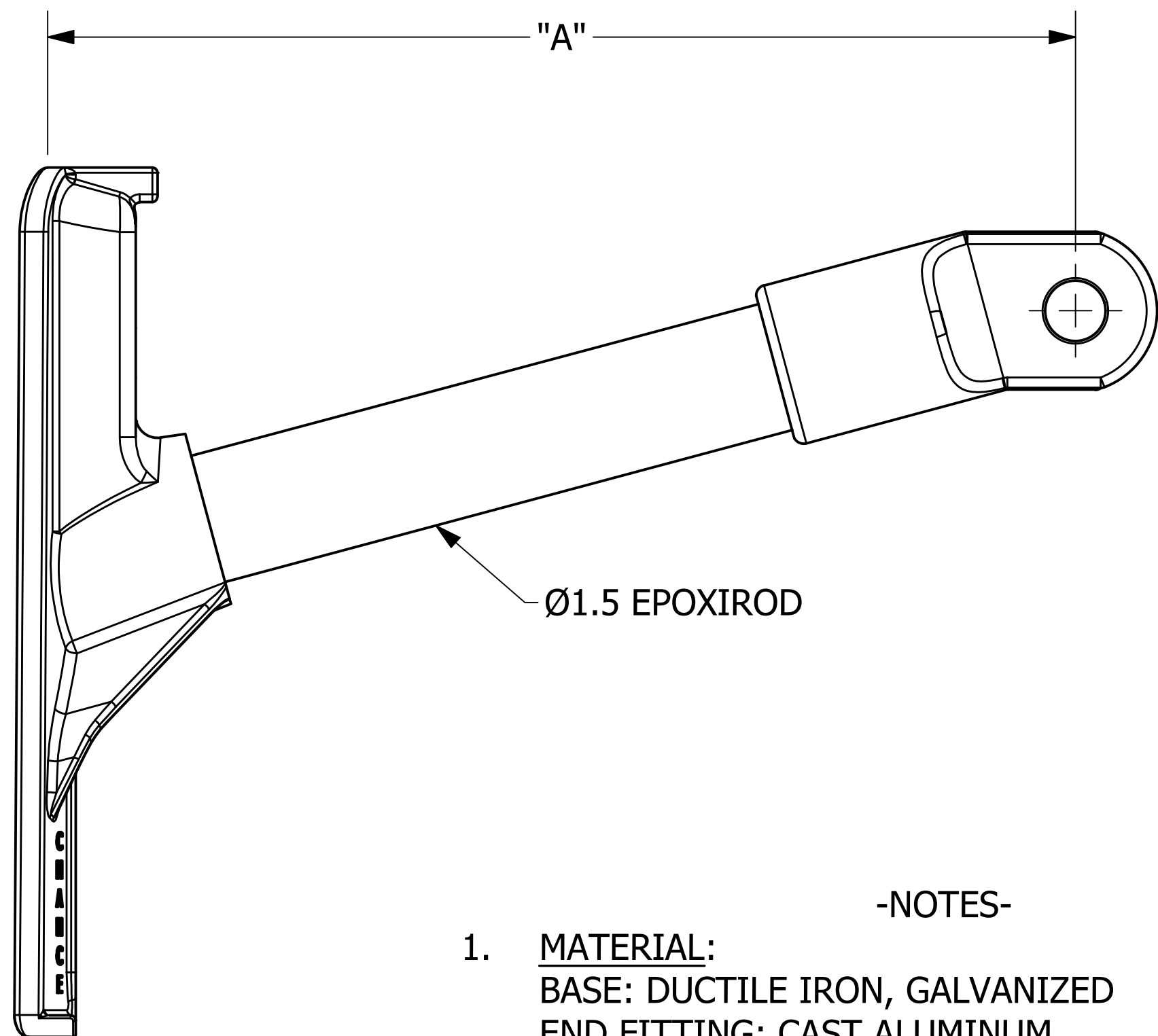
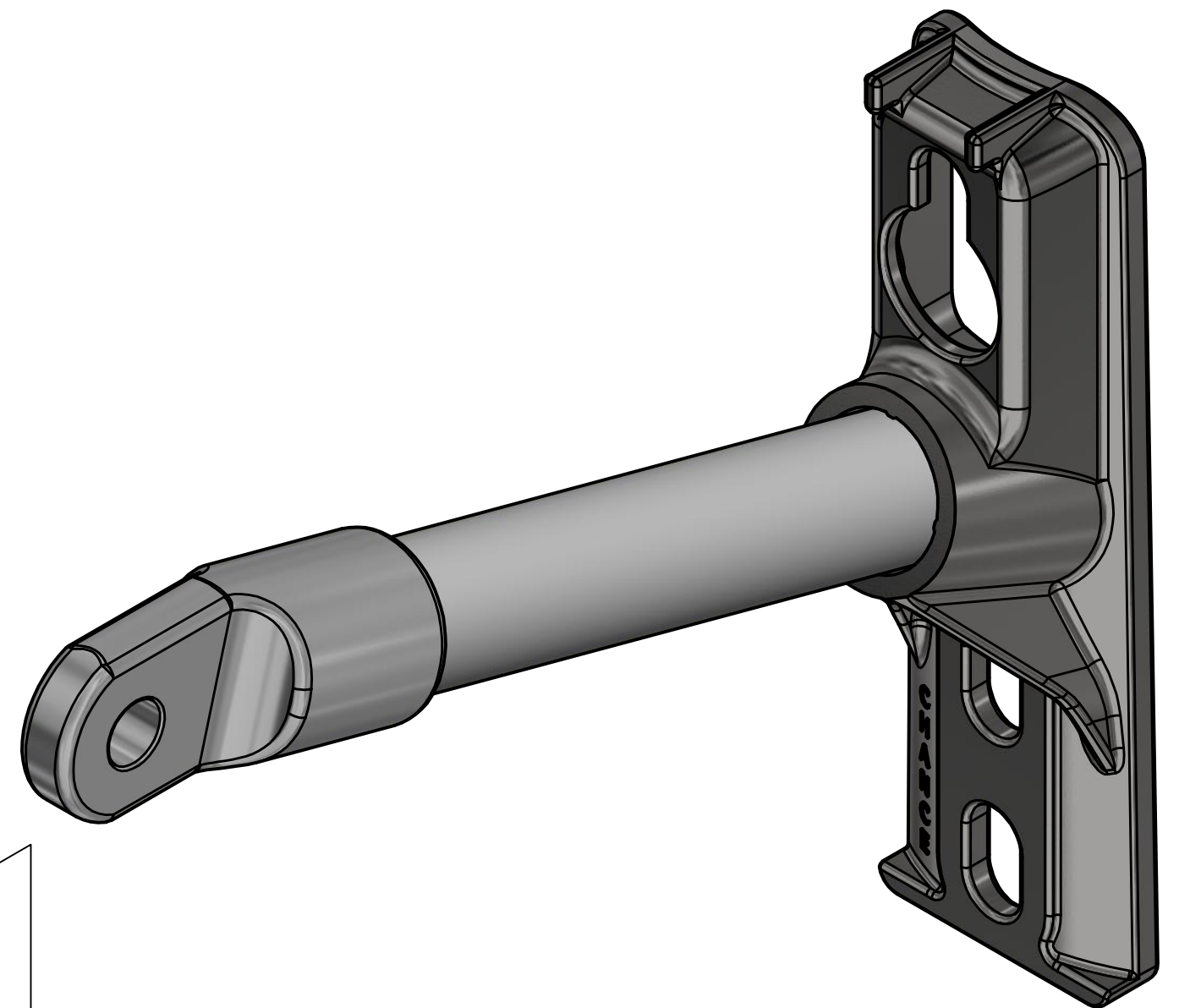
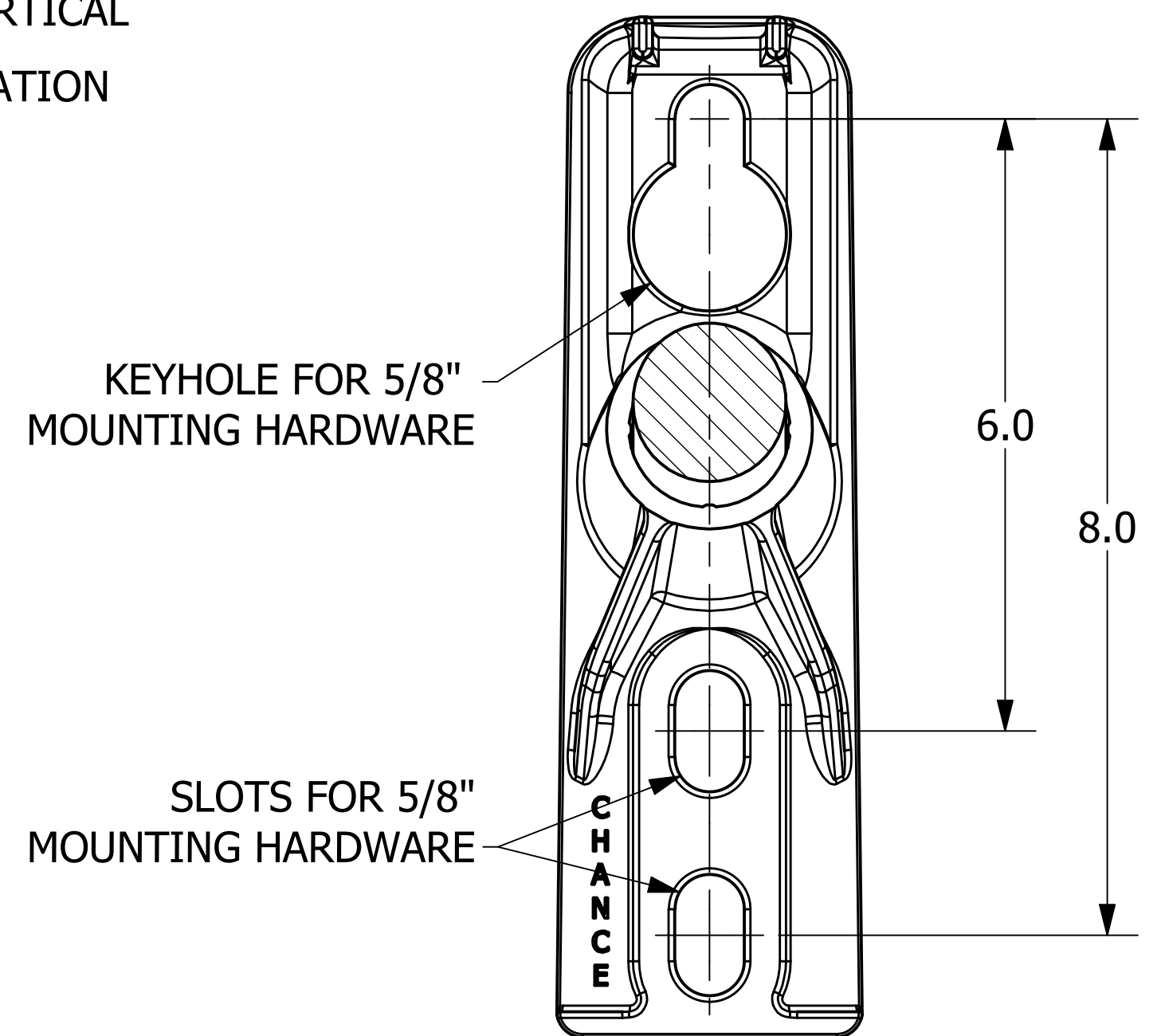


CATALOG NUMBER	"A"	ULTIMATE STRENGTH (LBS)	
		VERTICAL	TRANSVERSE
1SBM12S	12.0	1800	10,000
1SBM15S	15.0	1500	10,000
1SBM18S	18.0	1200	10,000
1SBM21S	21.0	1050	10,000
1SBM24S	24.0	900	10,000



TRANSVERSE  
 ↓  
 VERTICAL  
 LOADING ORIENTATION  
 (NOTE-3)



-NOTES-

- MATERIAL:**  
 BASE: DUCTILE IRON, GALVANIZED  
 END FITTING: CAST ALUMINUM
- END FITTING DESIGNED TO ACCOMMODATE 1-1/4" BANDING AS AN ALTERNATE MOUNTING METHOD
- RECOMMENDED MAXIMUM WORKING LOAD IS 50% OF THE MINIMUM ULTIMATE RATINGS LISTED

<b>CHANCE</b> <sup>®</sup>	<b>HUBBELL</b> <sup>®</sup> HUBBELL POWER SYSTEMS, INC. POWER SYSTEMS, INC.		
	TITLE: <b>STANDOFF BRACKET, SUSPENSION SINGLE-PHASE, 15°</b>		
SIZE <b>C</b>	CAT / PART / ASSY NO. <b>SEE CHART</b>	DWG NO. <b>SA1SBMXXS</b>	REV <b>A</b>
DO NOT SCALE THIS DRAWING	DRN BY HOEK	DATE 10/17/22	SHEET 1 OF 1

CONFIDENTIAL: THIS DRAWING AND ITS CONTENTS ARE CONFIDENTIAL AND THE EXCLUSIVE PROPERTY OF HUBBELL POWER SYSTEMS. NO PUBLICATION, DISTRIBUTION, OR COPIES MAY BE MADE WITHOUT THE WRITTEN CONSENT OF HUBBELL POWER SYSTEMS. HUBBELL POWER SYSTEMS UNPUBLISHED ALL RIGHTS RESERVED UNDER THE COPYRIGHT LAWS.