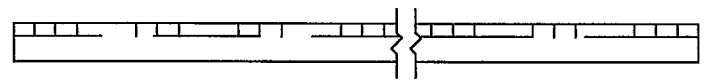
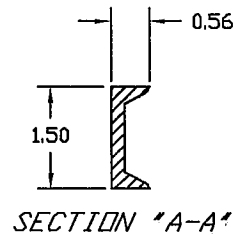
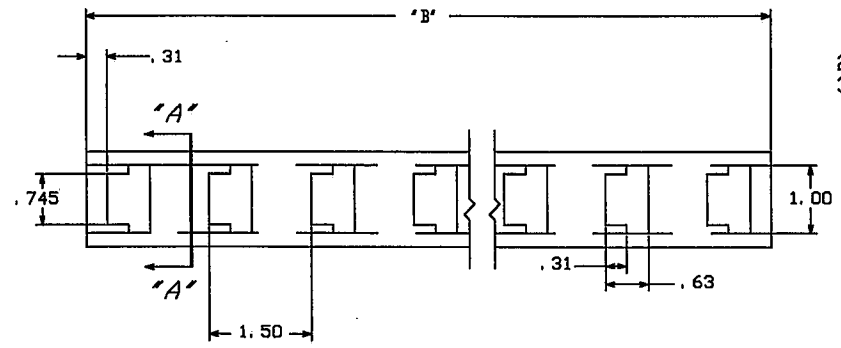


**-NOTES-**

1. MAT'L: HOT ROLLED STEEL CHANNEL, 1-1/2 X 9/16 X 3/16.
2. HOT DIP GALVANIZE PER ASTM A153.
3. ALL DIMENSIONS IN INCHES, UNLESS OTHERWISE NOTED.



\*DISTANCE BETWEEN ANY 16 HOLES = 24"

CAT. NO.	MAT'L	NO. OF RACK HOLES	DIM. 'B'
C203-0313	NOTE-1	37	55.25
C203-0314	NOTE-1	47	70.25

<b>CHANCE</b> TOLERANCE CHART <small>1. A .000 FRACTION INCHES OR MORE          2. .000 AND FRACTION INCHES NOTED          3. .000 CASTING 3" FINISHES 7"</small>		<b>HUBBELL POWER SYSTEMS</b>	
<small>CONFIDENTIAL: THIS DRAWING AND ITS CONTENTS ARE CONFIDENTIAL AND THE EXCLUSIVE PROPERTY OF HUBBELL POWER SYSTEMS. NO PUBLICATION, DISTRIBUTION OR COPIES MAY BE MADE WITHOUT THE WRITTEN CONSENT OF HUBBELL POWER SYSTEMS. HUBBELL POWER SYSTEMS UNPUBLISHED. ALL RIGHTS RESERVED UNDER THE COPYRIGHT LAWS.</small>		TITLE <b>RACK, CABLE</b>	
SIZE	DWG NO.	CAT / PART / ASSY NO.	REV
B	SA203-0313	SEE CHART	---
DO NOT SCALE THIS DRAWING	DRN BY QUALLS	DATE 05/11/99	SHEET 01 OF 01