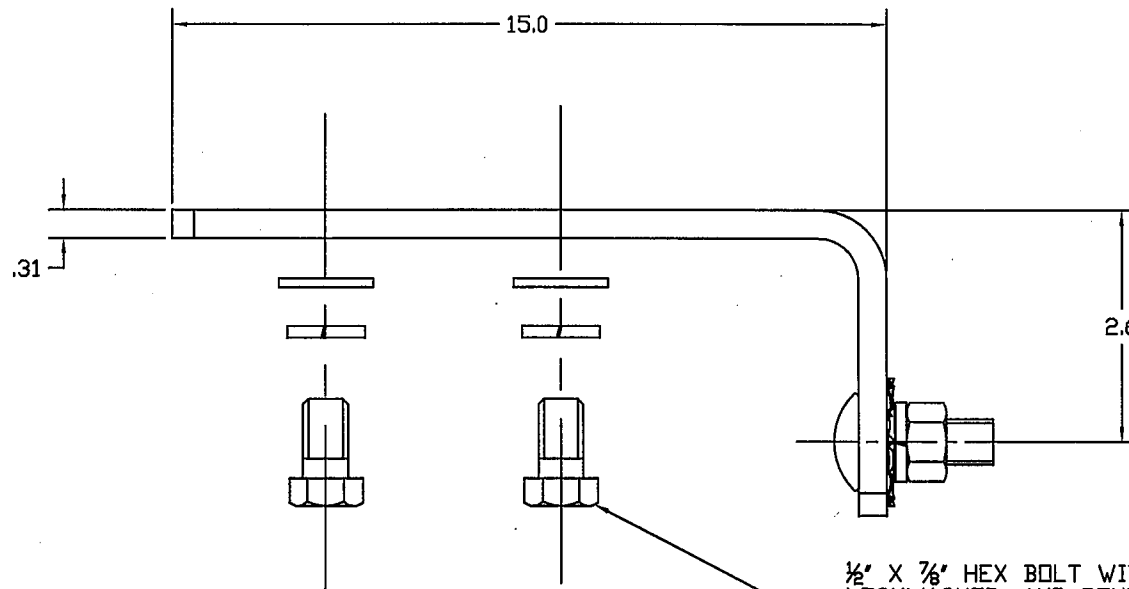
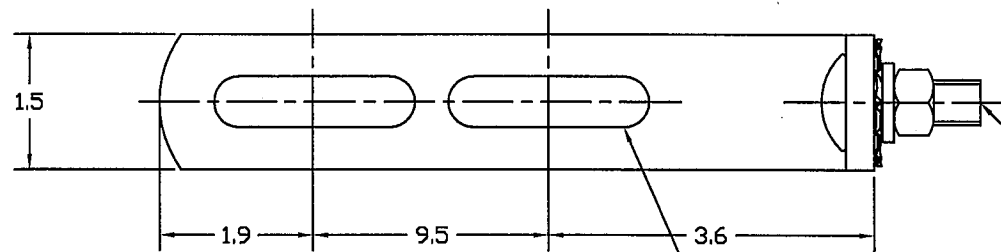


NOTE:

- 1.) MATERIAL: STEEL, HOT DIP GALVANIZED PER ASTM A153 (LATEST REVISION).




$\frac{1}{2}$ " X $\frac{7}{8}$ " HEX BOLT WITH SPLIT RING LOCKWASHER, AND ROUND WASHER (2 OF EACH SUPPLIED WITH BRACKET)



$\frac{1}{2}$ " X $1\frac{1}{2}$ " CARRIAGE BOLT WITH INT./EXT. TOOTH LOCKWASHER, SPLIT RING LOCKWASHER, AND HEX NUT (INSTALLED AS SHOWN)

.56 X 2.25 LG. SLOTS (TYP.)

CATALOG NUMBER: T2060451

CHANCE TOLERANCE CHART		 HUBBELL POWER SYSTEMS POWER SYSTEMS, INC.	
CONFIDENTIAL: THIS DRAWING AND ITS CONTENTS ARE CONFIDENTIAL AND THE EXCLUSIVE PROPERTY OF HUBBELL POWER SYSTEMS. NO PUBLICATION, DISTRIBUTION OR COPIES MAY BE MADE WITHOUT THE WRITTEN CONSENT OF HUBBELL POWER SYSTEMS. HUBBELL POWER SYSTEMS UNPUBLISHED ALL RIGHTS RESERVED UNDER THE COPYRIGHT LAWS.			
TITLE		ARRESTER BRACKET ASSEMBLY	
SIZE	DWG NO.	CAT / PART / ASSY NO.	REV
SB	SA206-0451	T206-0451	---
DO NOT SCALE THIS DRAWING	DRN BY JJL	DATE 09/30/08	SHEET 01 OF 01