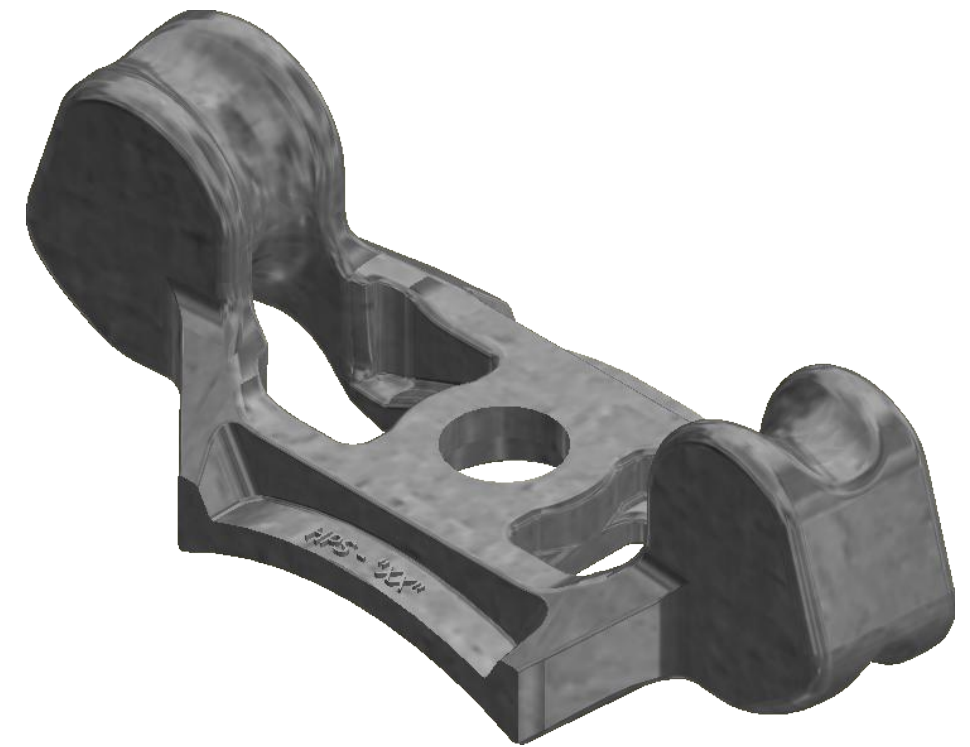


CATALOG NO.: PSC2080479



-NOTES-

1. INTEGRAL THIMBLE EYE POLE ATTACHMENT FOR DEAD ENDING STRAND AND GUY GRIPS AT ANGLES OF 35° TO 60°.
2. POLE MOUNTING SURFACE IS CURVED WITH INTEGRAL SPURS FOR STABILITY DURING MOUNTING AND LIFE OF INSTALLATION.
3. ACCOMODATES MAXIMUM 1/2" DIAMETER STRAND/GUY GRIPS.
4. DUCTILE IRON PER ASTM A536, GALVANIZED PER ASTM A153.

CHANCE [®]	HUBBELL [®] HUBBELL POWER SYSTEMS, INC. <small>POWER SYSTEMS, INC.</small>			
	TITLE BRACKET CORNER ATTACHMENT			
CONFIDENTIAL: THIS DRAWING AND ITS CONTENTS ARE CONFIDENTIAL AND THE EXCLUSIVE PROPERTY OF HUBBELL POWER SYSTEMS. NO PUBLICATION, DISTRIBUTION, OR COPIES MAY BE MADE WITHOUT THE WRITTEN CONSENT OF HUBBELL POWER SYSTEMS. HUBBELL POWER SYSTEMS UNPUBLISHED ALL RIGHTS RESERVED UNDER THE COPYRIGHT LAWS.	SIZE B	CAT / PART / ASSY NO. PSC2080479	DWG NO. SA2080479	REV -
	DO NOT SCALE THIS DRAWING	DRN BY MTH	DATE 9/16/16	SHEET 1 OF 1